

# FTRSTF Education

FTRSTF

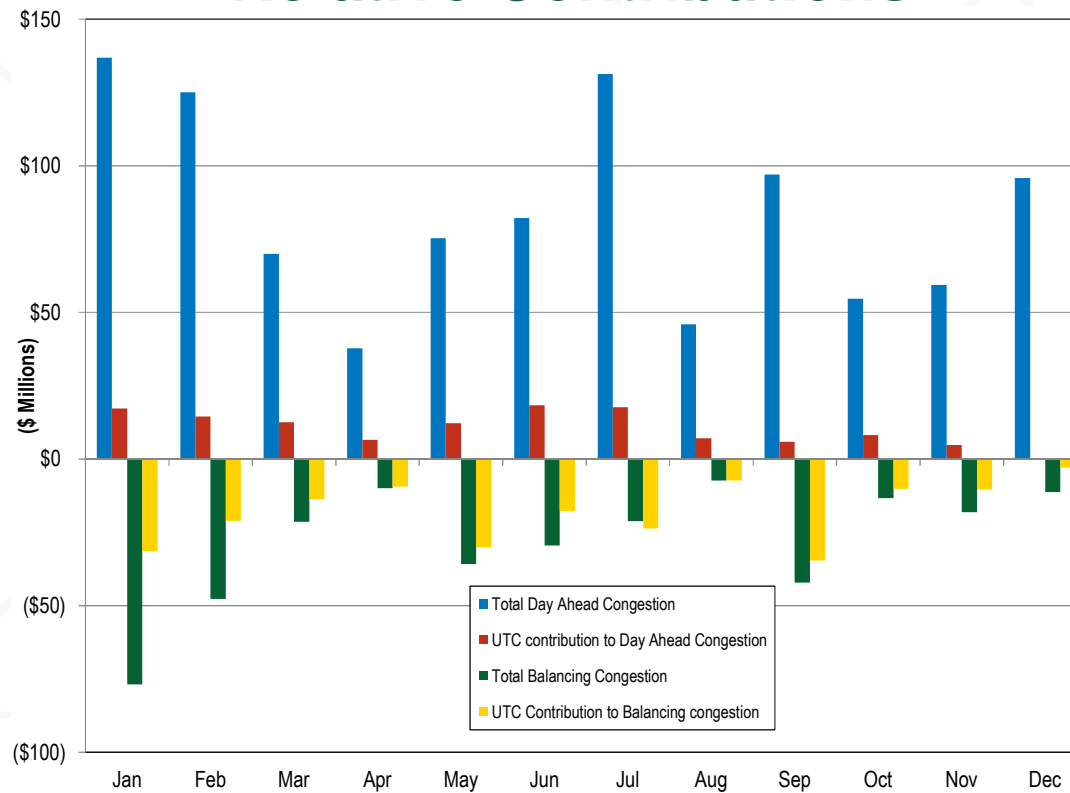
July 16, 2014

Howard Haas

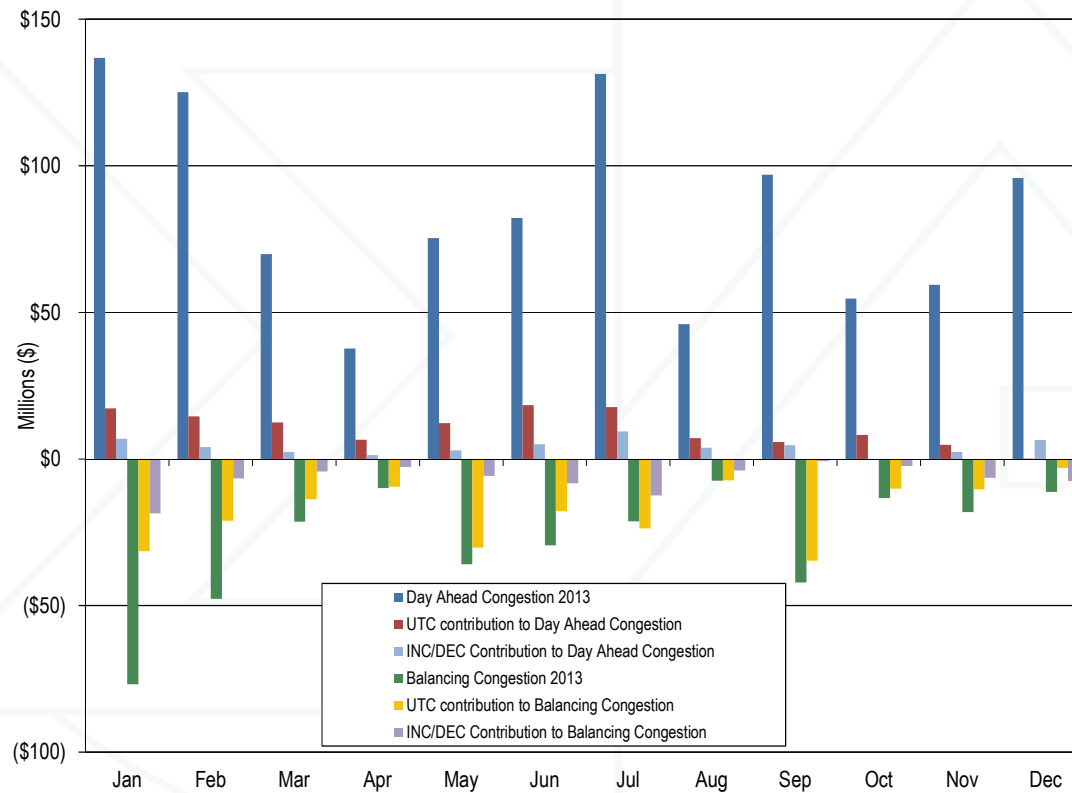


Monitoring Analytics

# 2013 Day Ahead and Balancing Congestion: UTC Relative Contributions



# 2013 Day Ahead and Balancing Congestion: UTC and INC/DEC Relative Contributions



## UTC and INC/DEC Relative Contributions to Day Ahead and Balancing Congestion: 2012 and 2013

Year	Total Day Ahead Congestion	Total UTC Contribution to Day Ahead Congestion	Total INC/DEC Contribution to Day Ahead Congestion	UTC Contribution as a Percentage of Day Ahead Congestion	INC/DEC Contribution as a Percentage of Day Ahead Congestion
2012	\$780	\$127	\$18	16%	2%
2013	\$1,011	\$125	\$49	12%	5%

Year	Total Balancing Congestion	Total UTC Contribution to Balancing Congestion	Total INC/DEC Contribution to Balancing Congestion	UTC Contribution as a Percentage of Balancing Congestion	INC/DEC Contribution as a Percentage of Balancing Congestion
2012	(\$251)	(\$180)	(\$32)	72%	13%
2013	(\$334)	(\$213)	(\$79)	64%	24%

## UTC and INC/DEC Relative Contributions to Loss Surplus: 2013

Month	Total Loss Surplus	UTC Contribution to Loss Surplus	INC/DEC Contribution to Loss Surplus
January	\$37.8	(\$4.5)	(\$5.8)
February	\$31.8	(\$3.2)	(\$0.9)
March	\$29.8	(\$5.8)	(\$3.7)
April	\$19.7	(\$6.7)	(\$1.3)
May	\$15.9	(\$9.7)	(\$2.0)
June	\$26.2	(\$6.3)	(\$3.1)
July	\$50.6	(\$4.7)	(\$12.1)
August	\$29.1	(\$3.8)	(\$1.6)
September	\$26.2	(\$3.9)	(\$6.4)
October	\$22.2	(\$3.8)	\$0.5
November	\$17.3	(\$4.7)	\$1.9
December	\$24.1	(\$5.7)	\$0.8
Total	\$330.9	(\$62.7)	(\$33.6)

**Monitoring Analytics, LLC**

**2621 Van Buren Avenue**

**Suite 160**

**Eagleville, PA**

**19403**

**(610) 271-8050**

**MA@monitoringanalytics.com**

**www.MonitoringAnalytics.com**

