

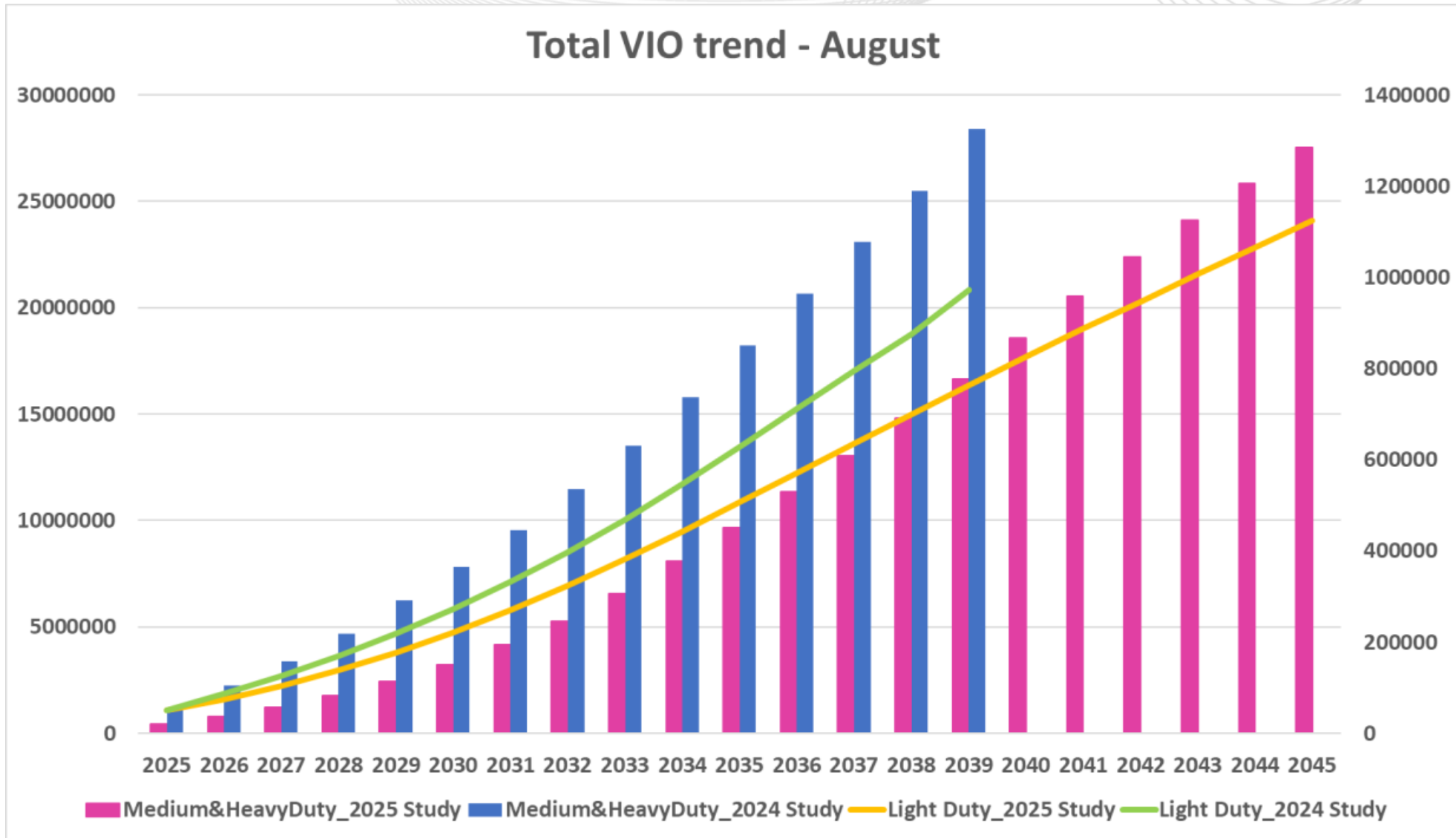
Plug-in Electric Vehicles

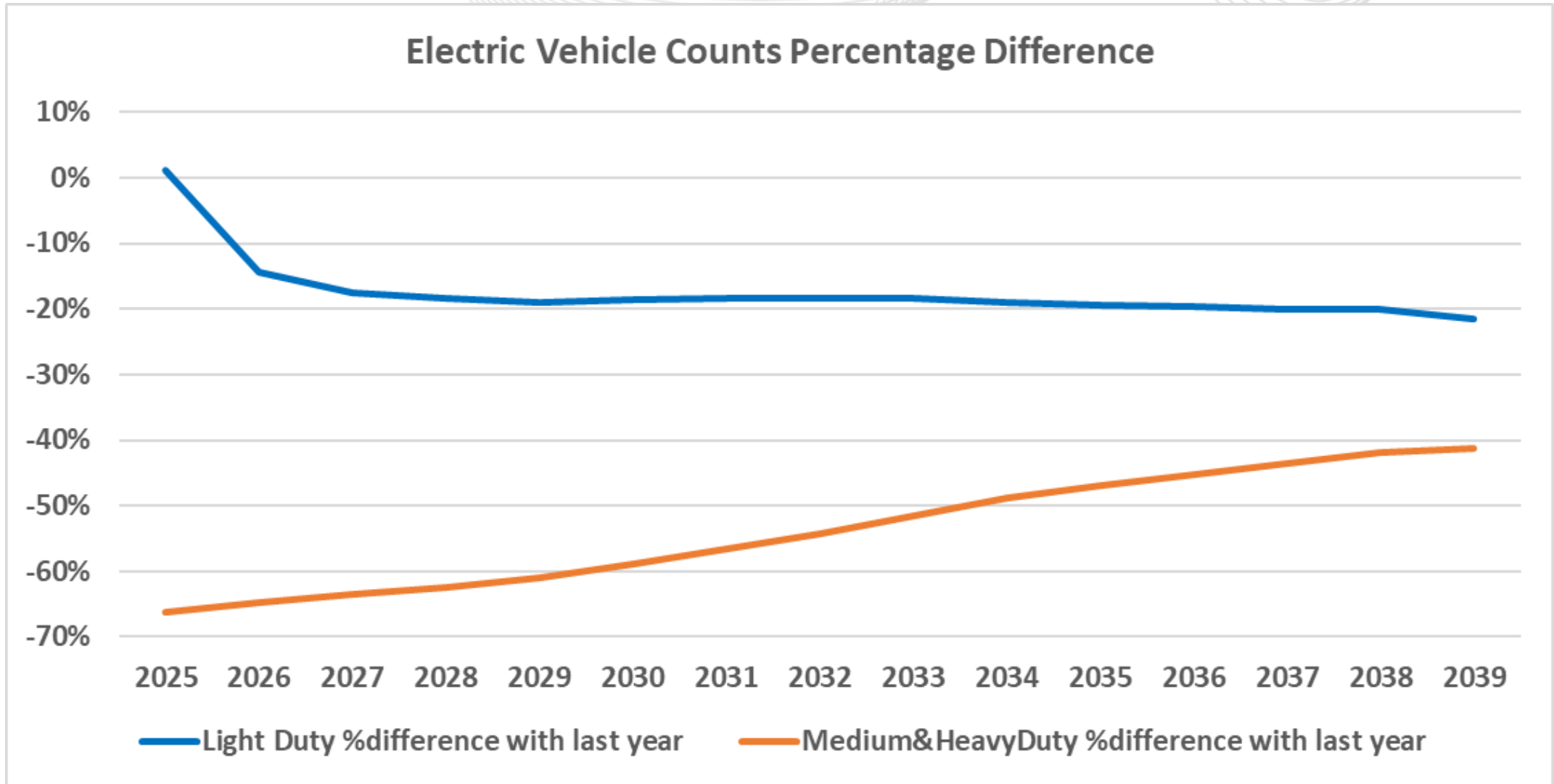
Molly Mooney

Load Analysis Subcommittee

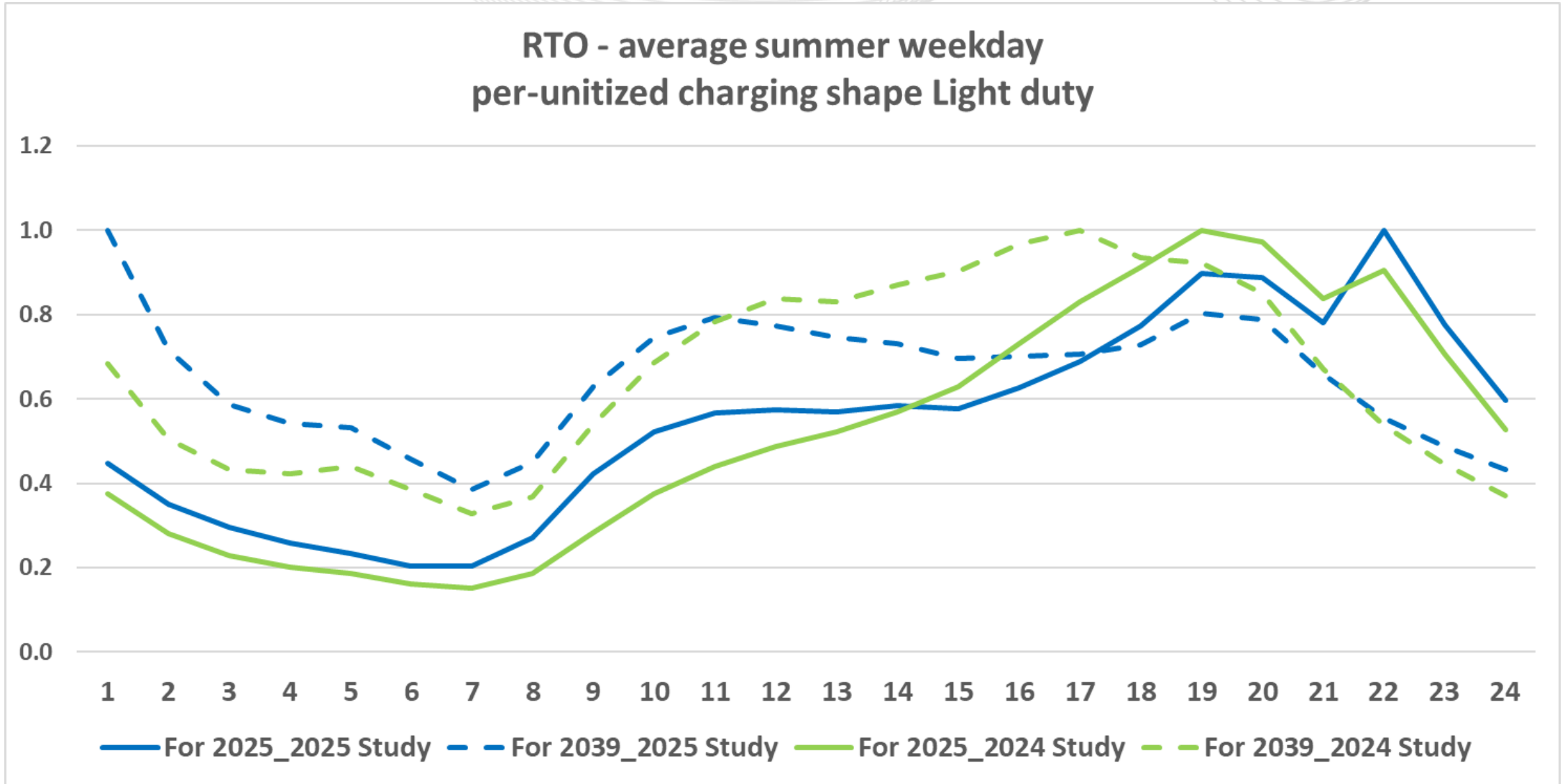
November 25, 2024

Plug-in electric vehicles include both all-electric BEV and plug-in hybrids.

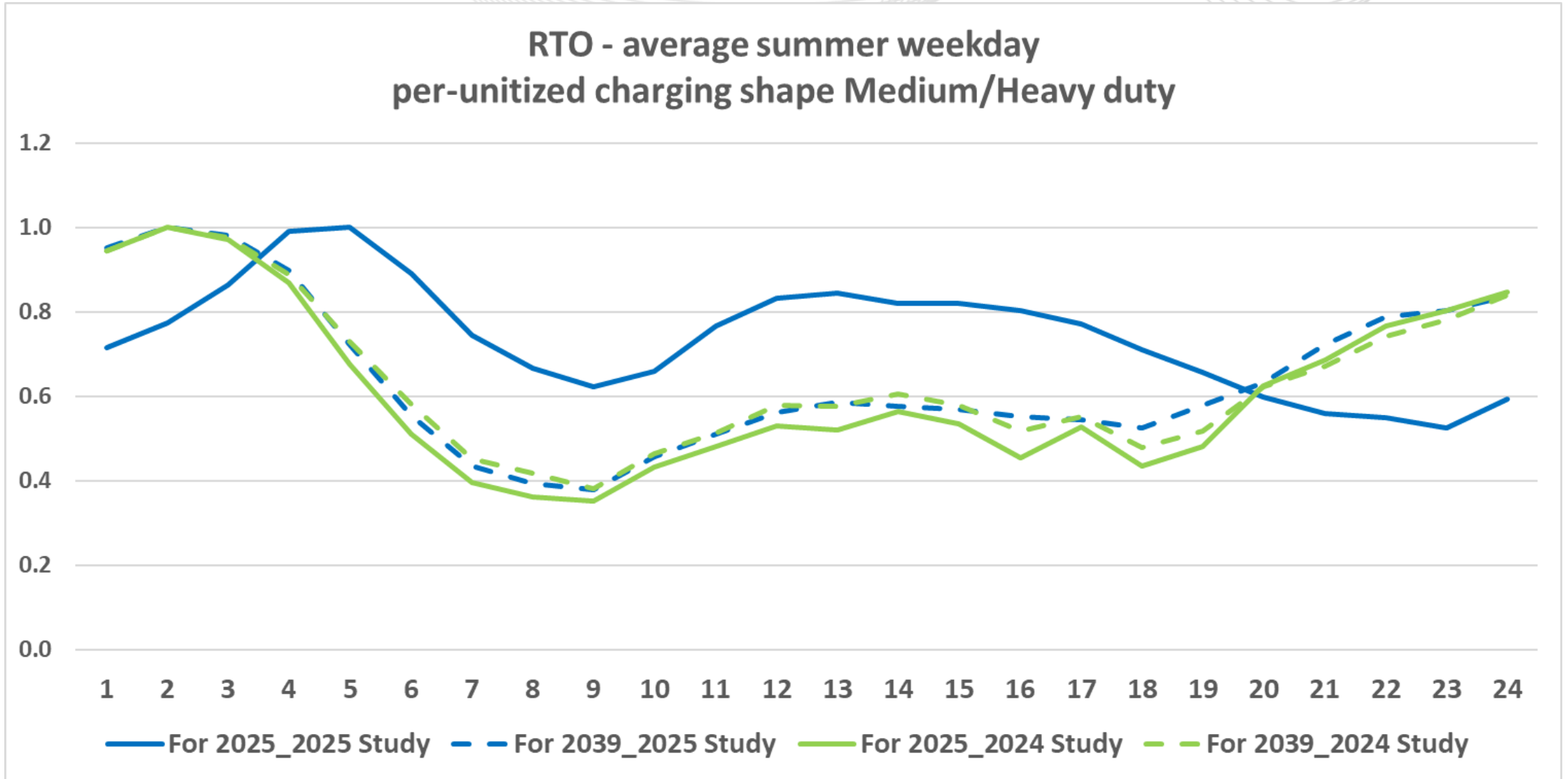


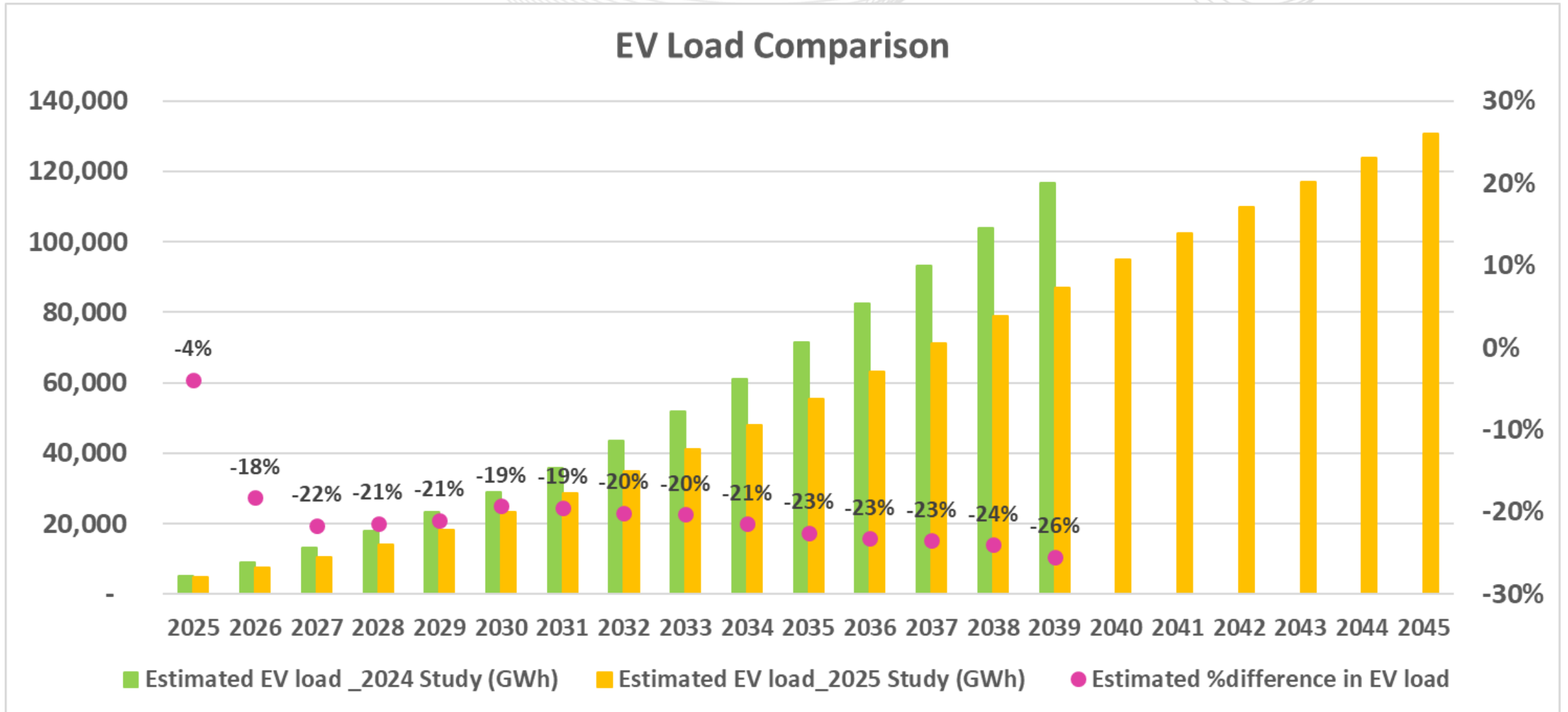


RTO Light Duty Charging Shapes Comparison

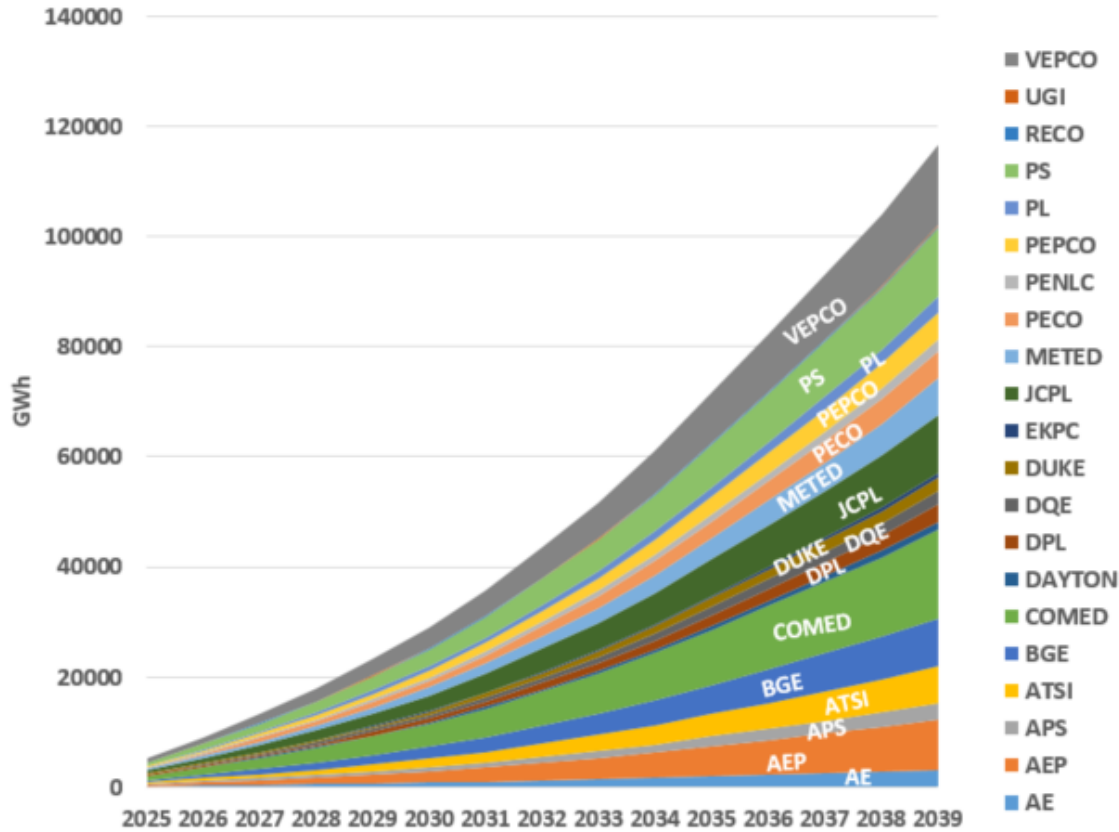


RTO Medium/Heavy Duty Charging Shapes Comparison

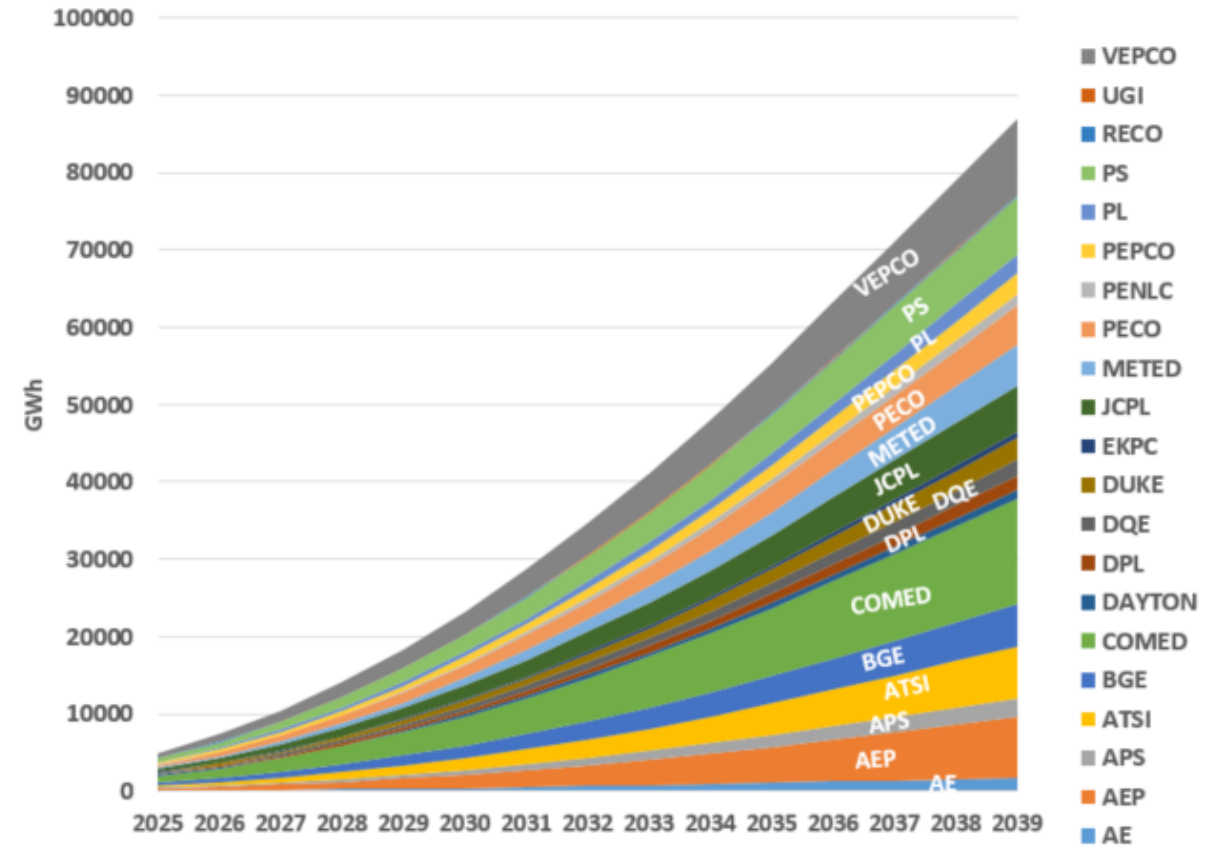


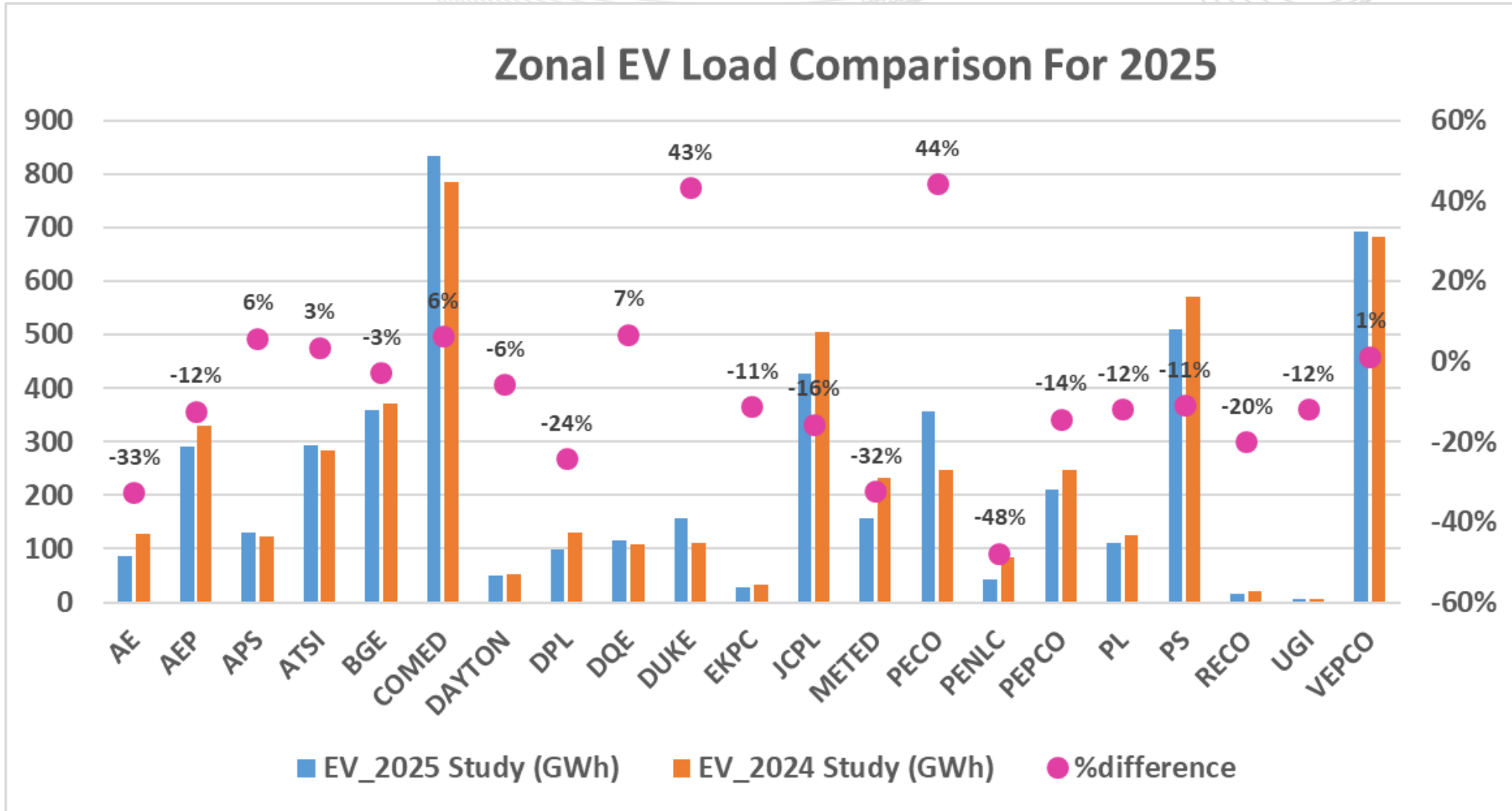


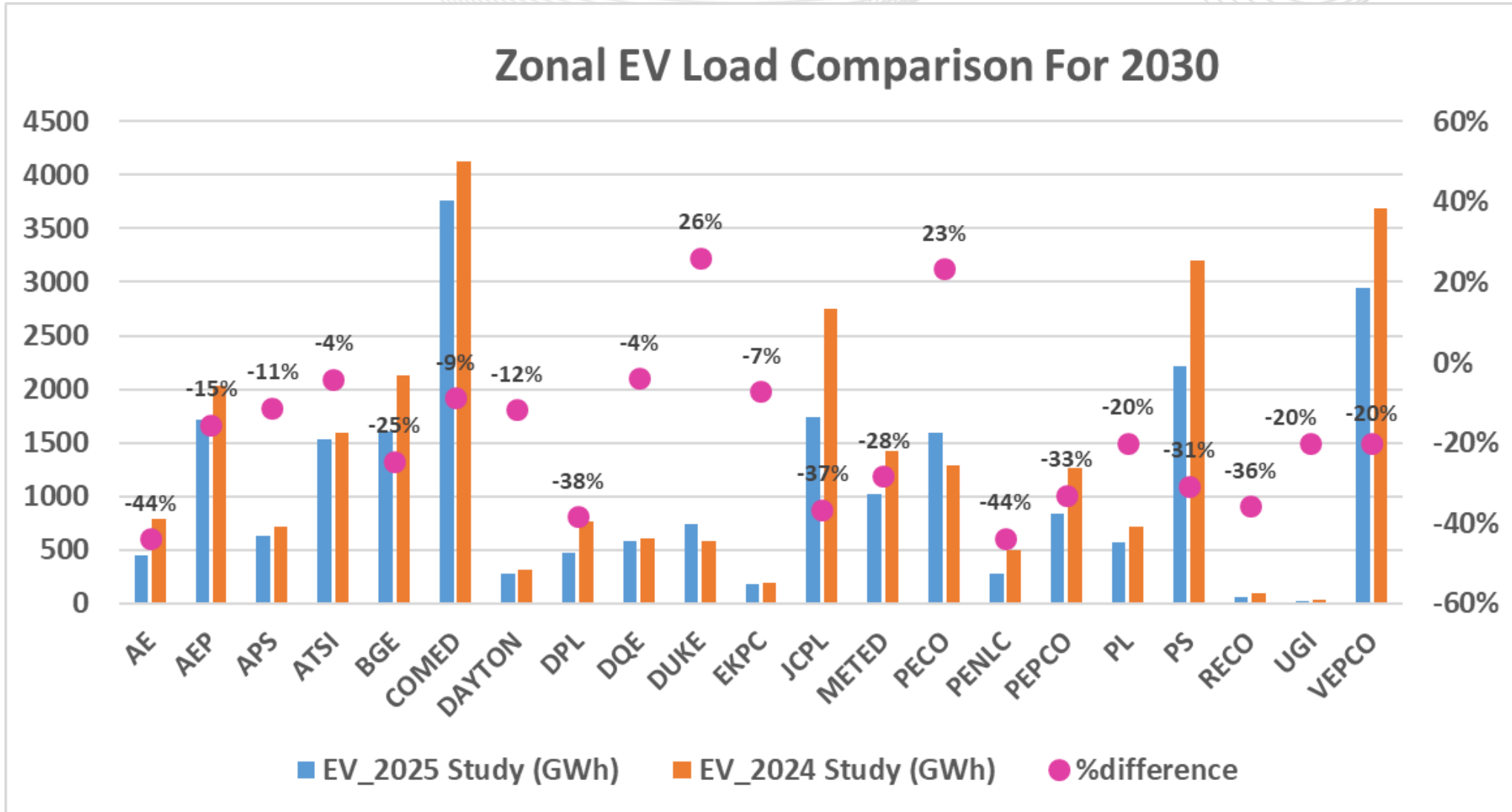
Zonal Breakdown_2024 Study

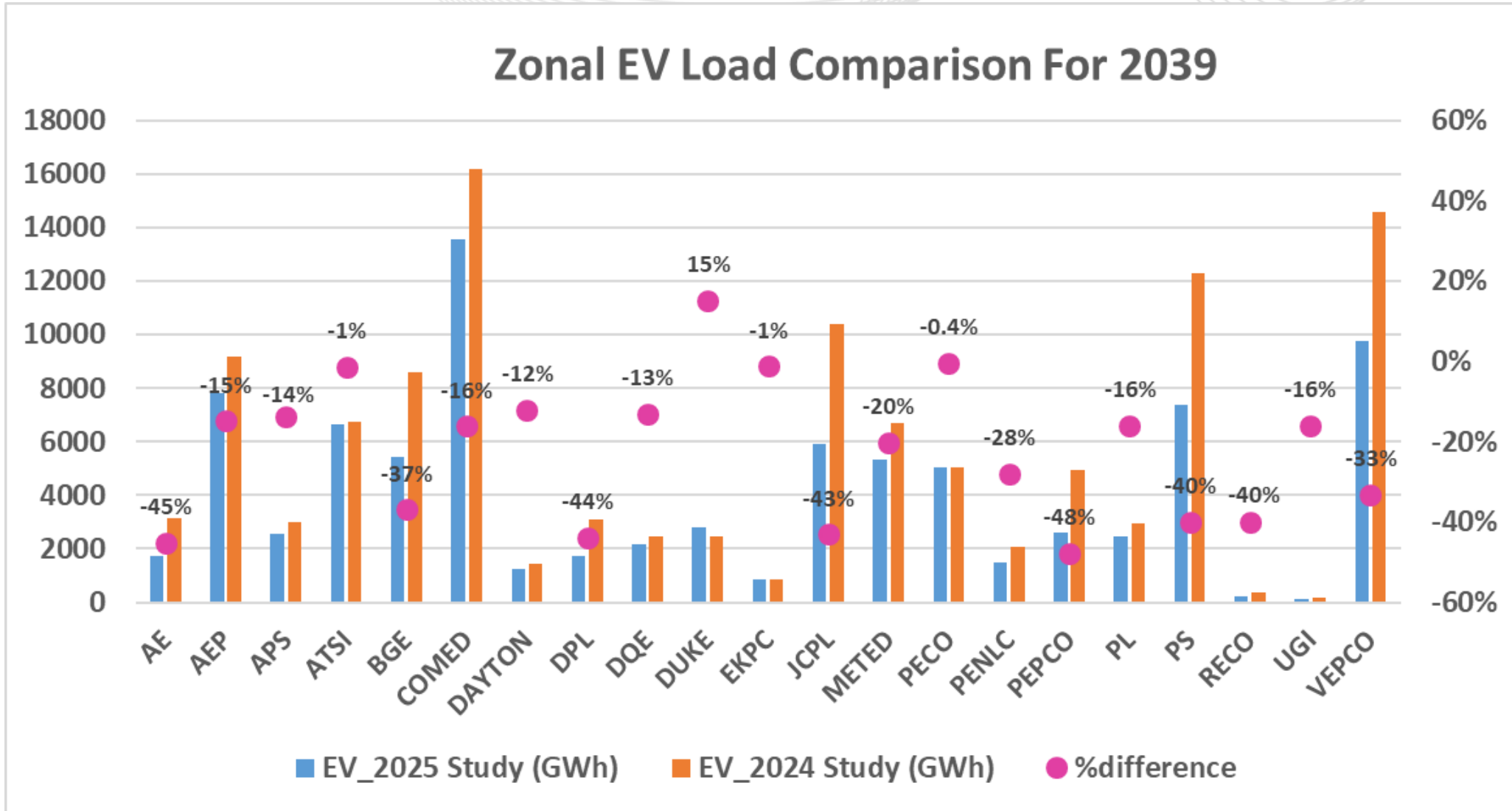


Zonal Breakdown_2025 Study









SME/Presenter:
Molly Mooney,
Molly.Mooney@pjm.com

Plug-in Electric Vehicles



Member Hotline

(610) 666-8980

(866) 400-8980

custsvc@pjm.com

**PROTECT THE
POWER GRID
THINK BEFORE
YOU CLICK!**



Be alert to
malicious
phishing emails.

Report suspicious email activity to PJM.
(610) 666-2244 / it_ops_ctr_shift@pjm.com

