

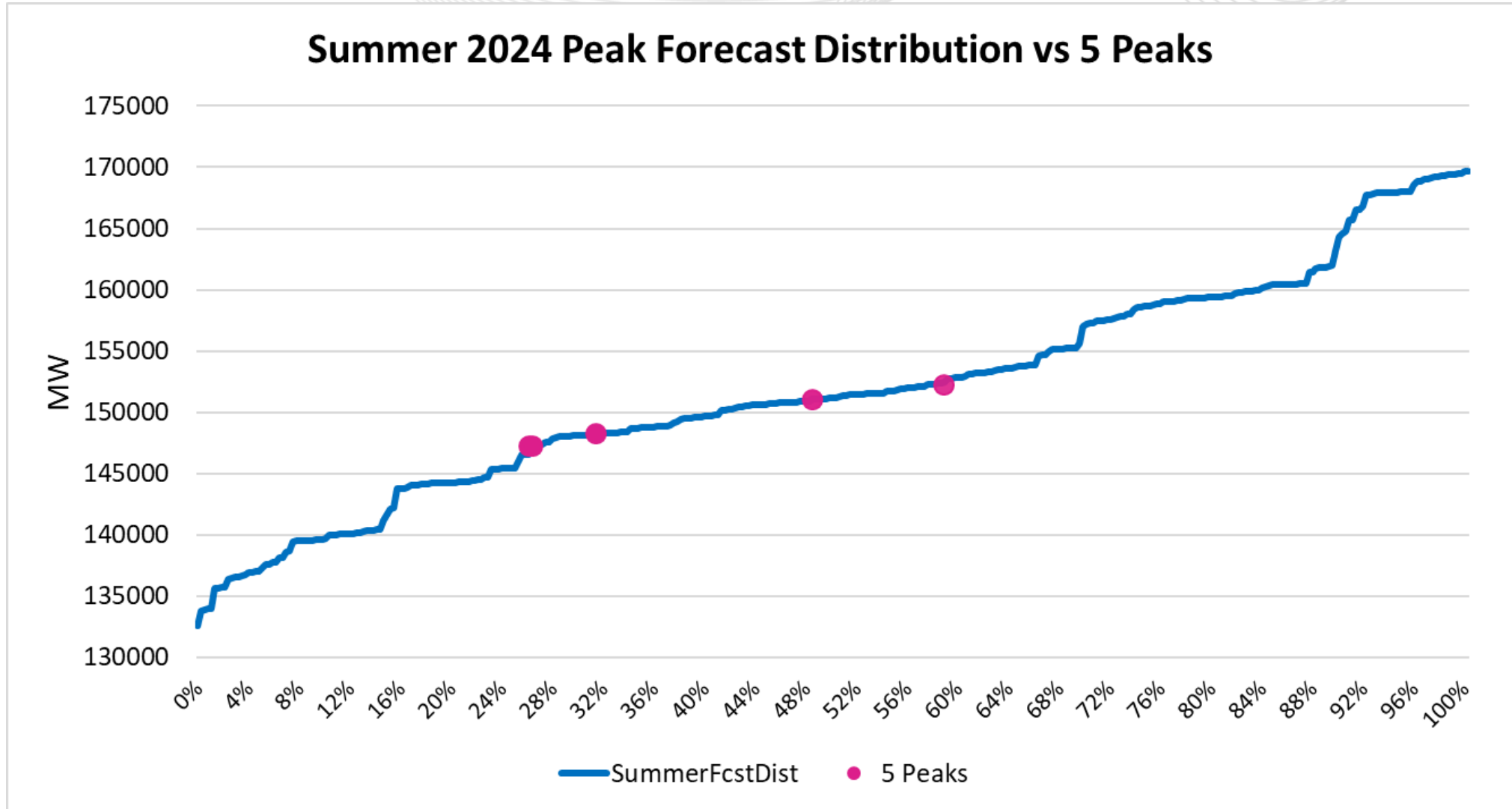


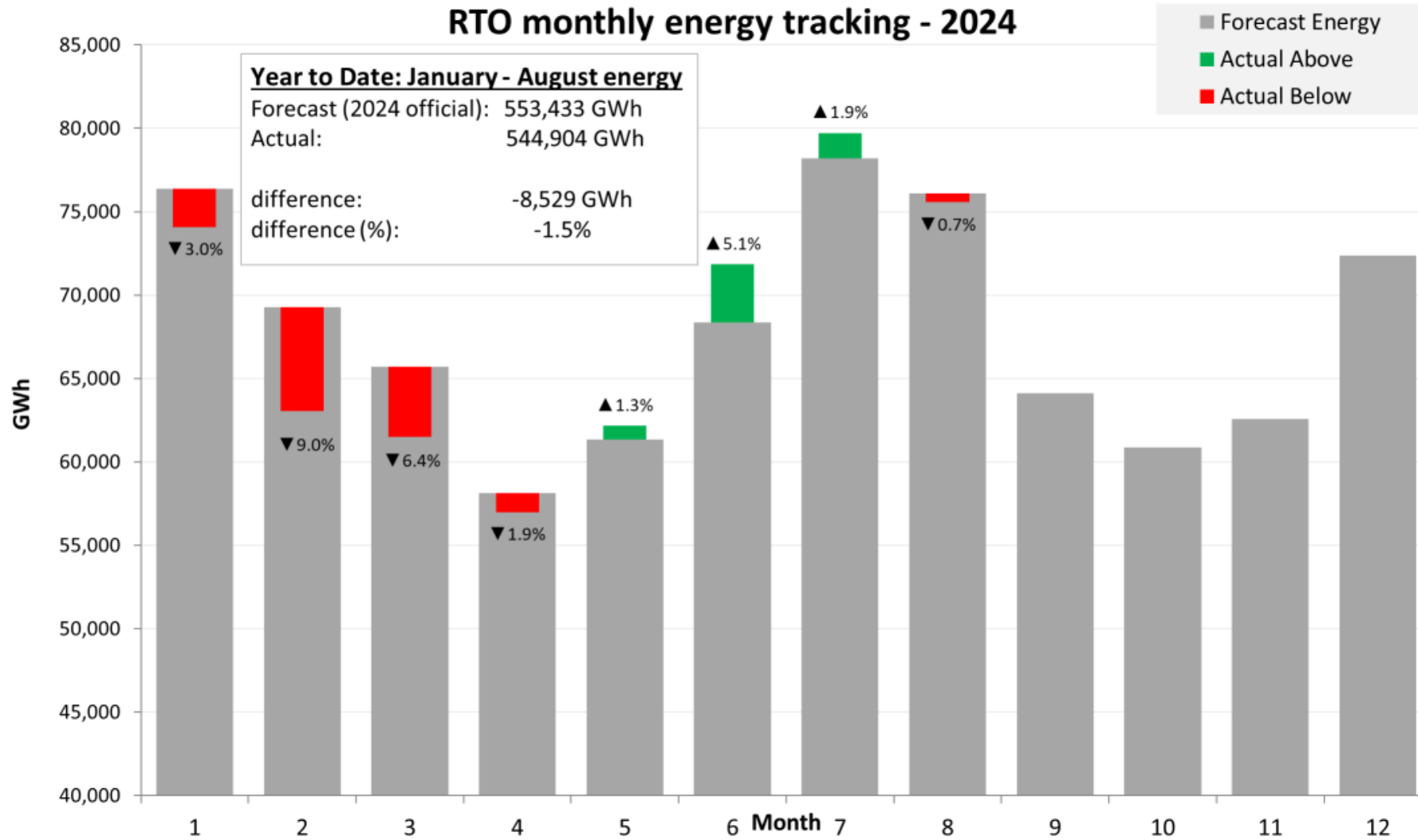
Review of Preliminary Summer 2024 Loads

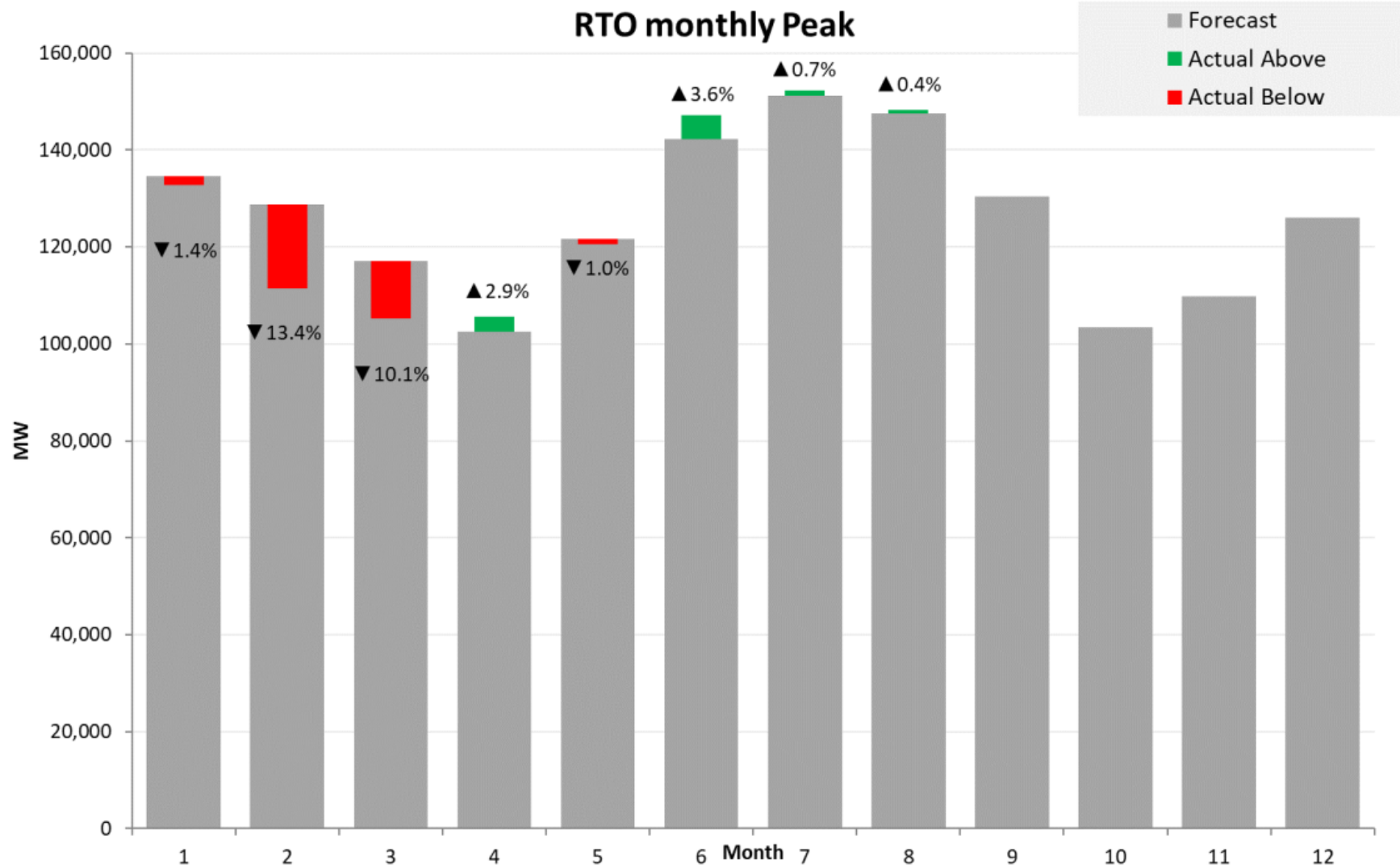
Molly Mooney

Load Analysis Subcommittee

September 19, 2024

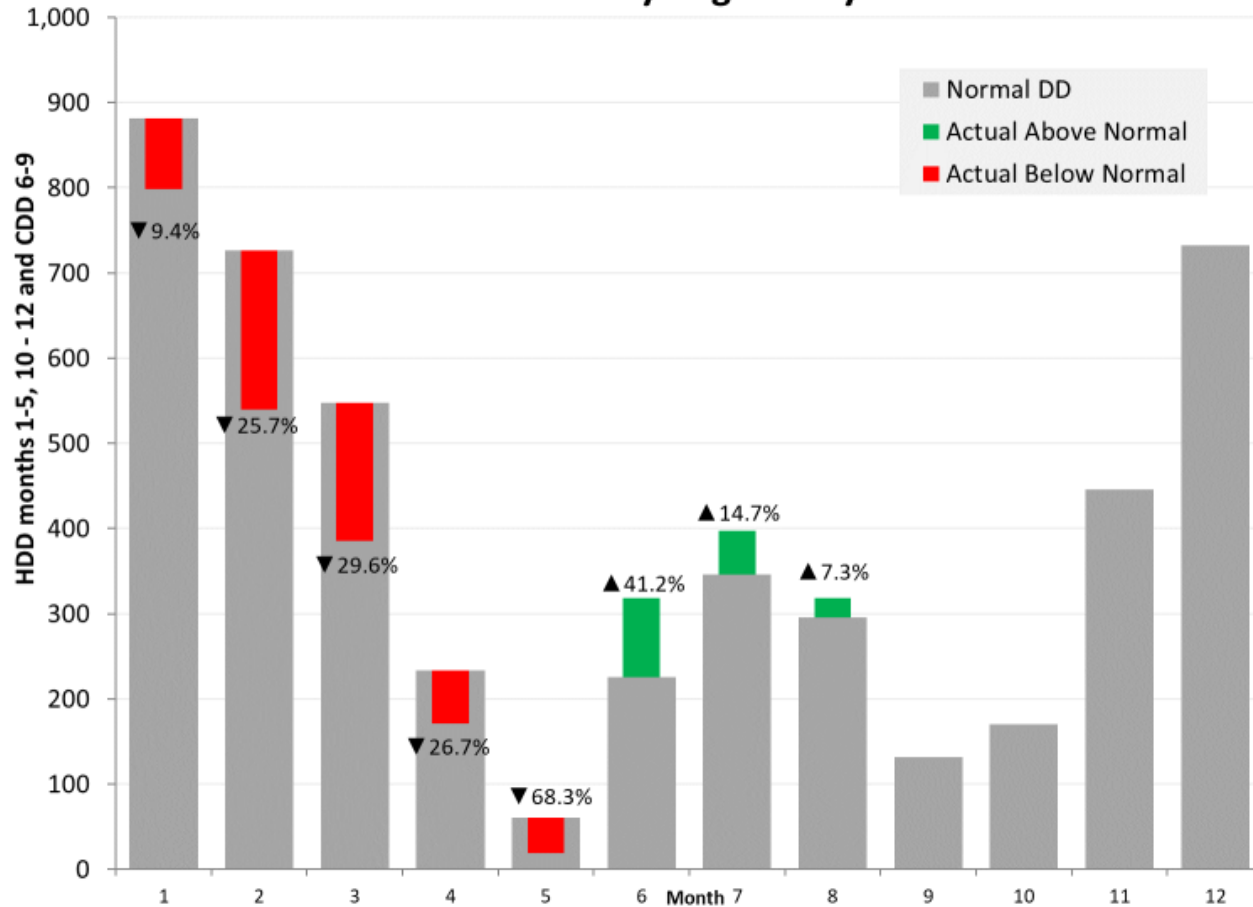






Monthly Degree Day and Average Temperature

RTO monthly degree days



RTO degree days is calculated by using the load proportion of each zone in 2021 Summer WN as weights, and aggregate the zonal values.

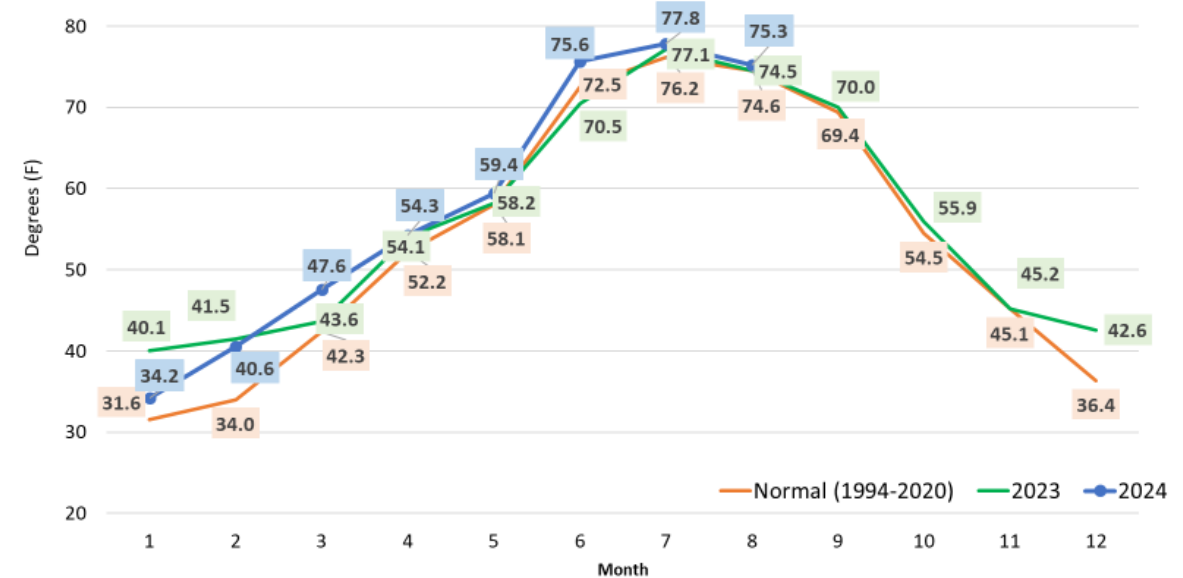
June through September

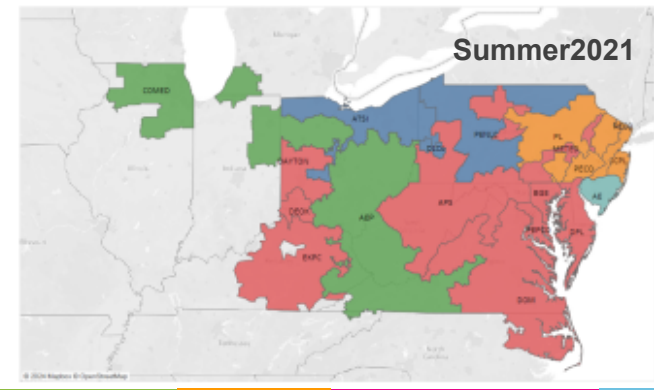
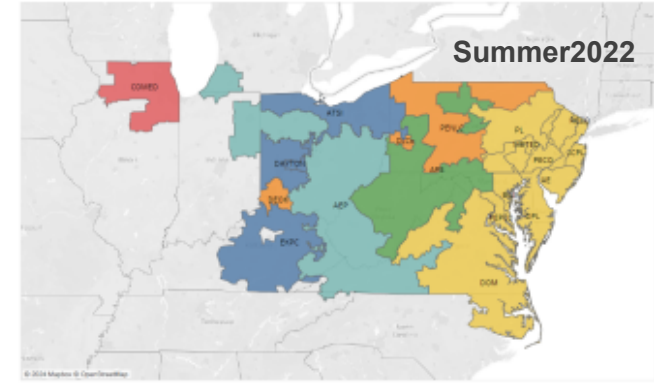
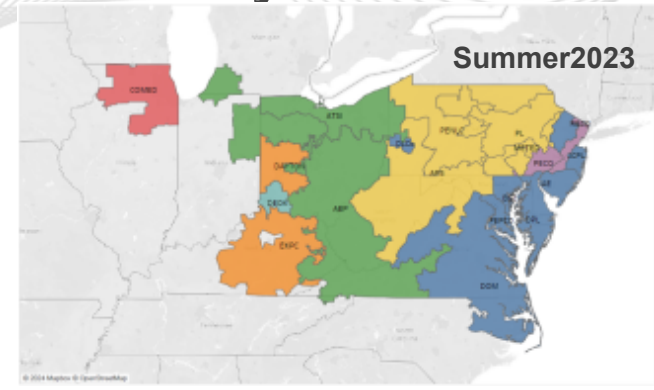
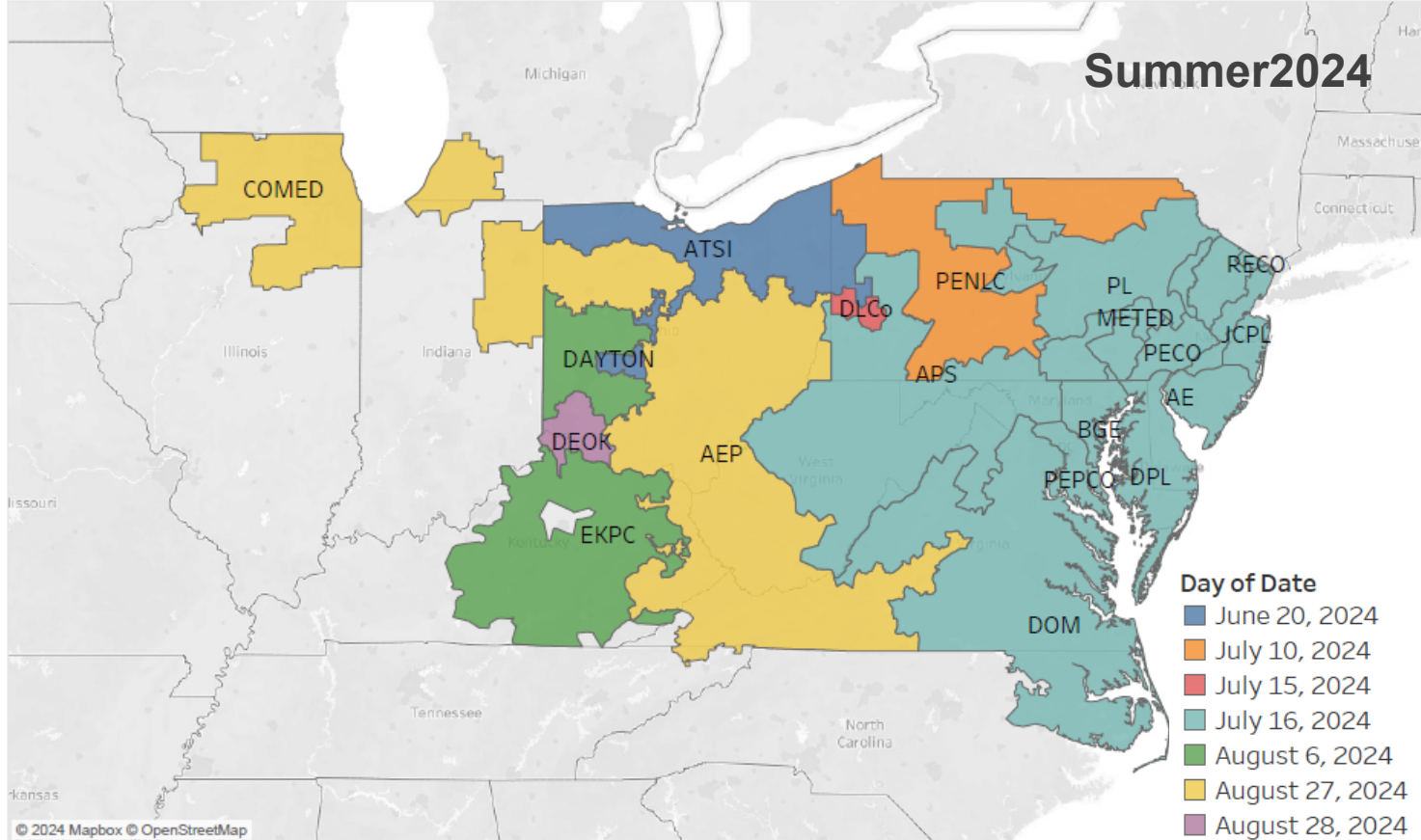
Average Temperature = Total cdd / The number of days in the month

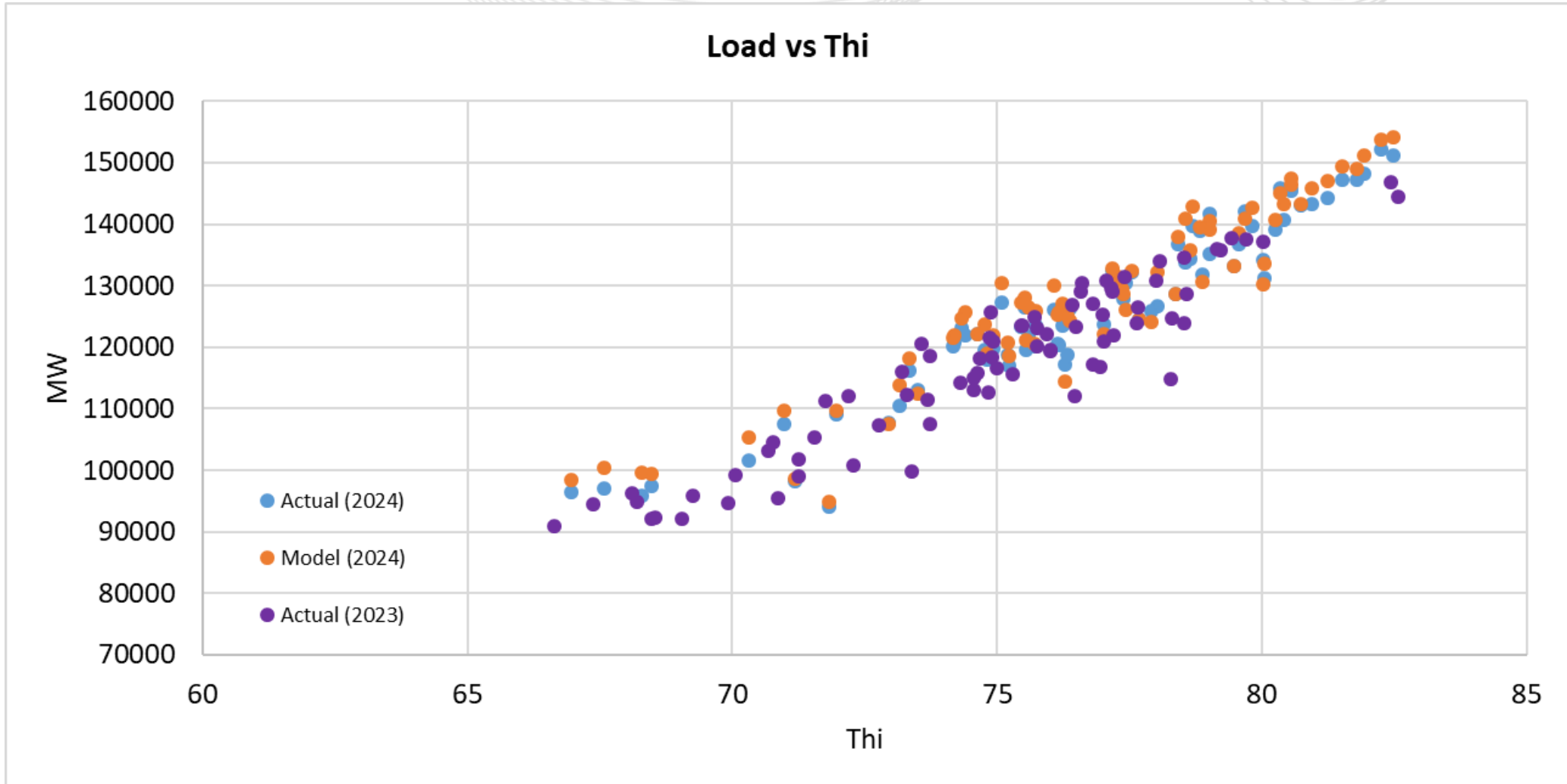
January through May and October through December

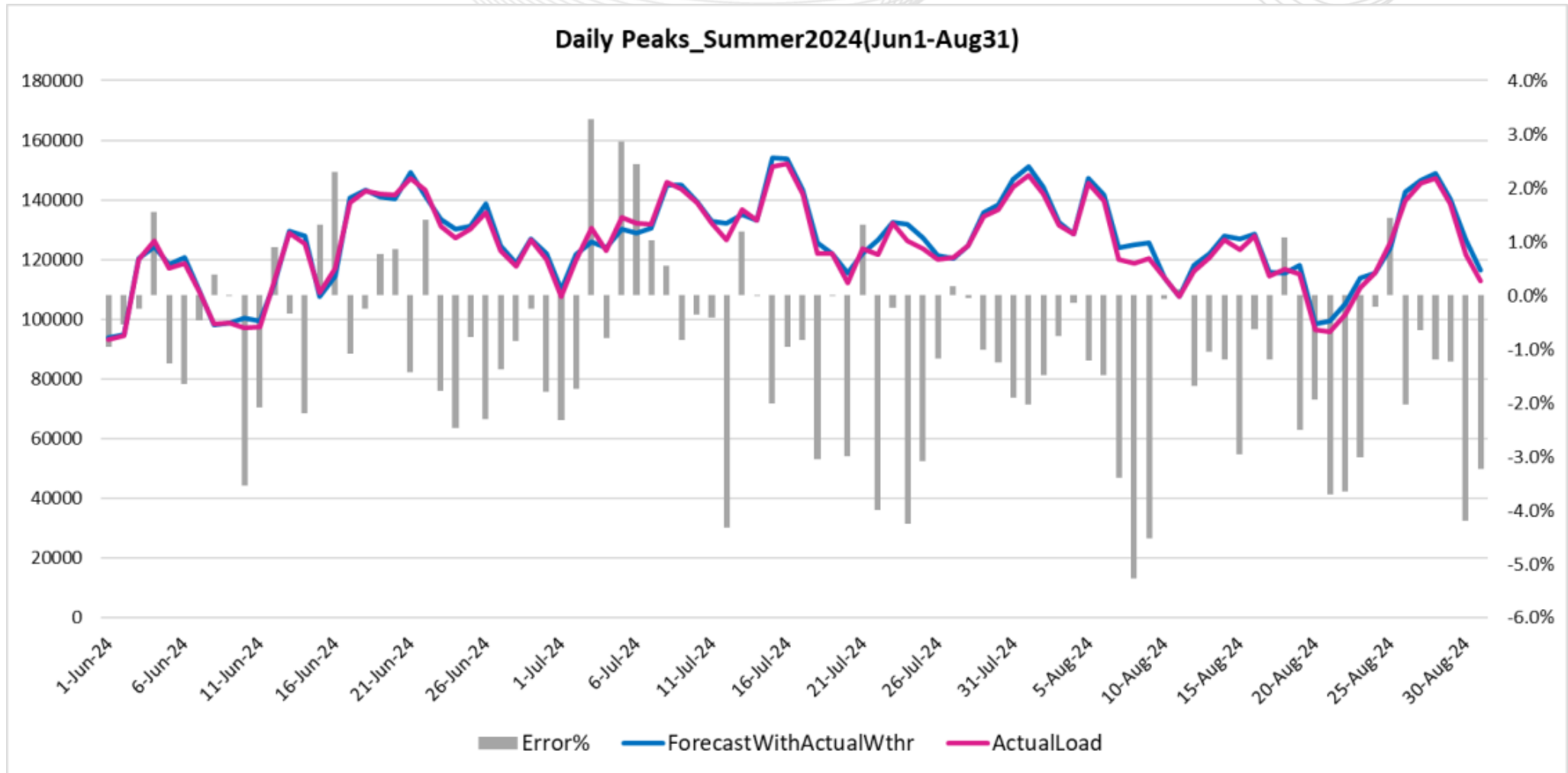
Average Temperature = Total hdd / The number of days in the month

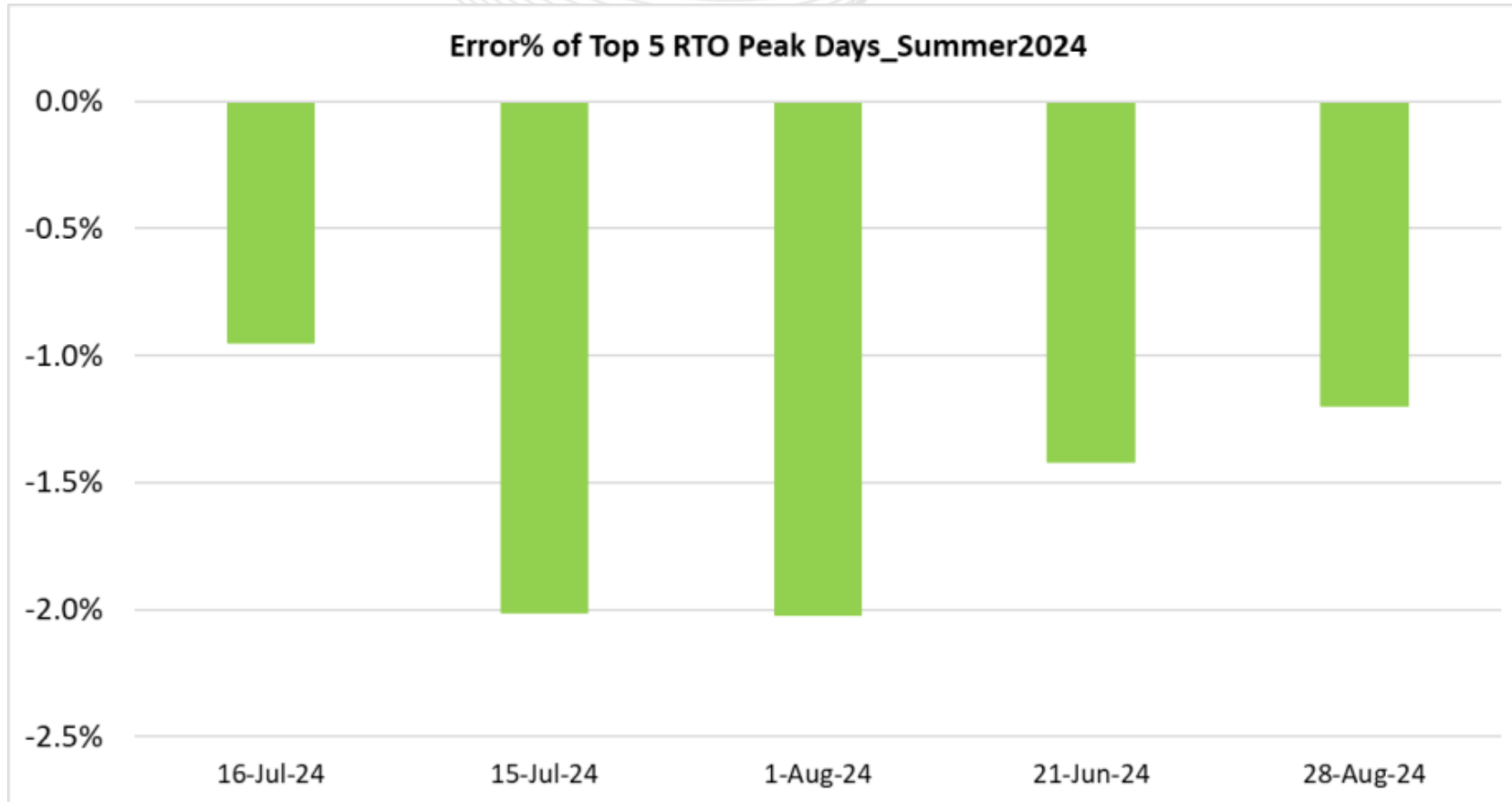
Average Temperature











Error% =
 $(\text{actual peak} - \text{forecast value}) / \text{actual peak}$

SME/Presenter:
Molly Mooney,
Molly.Mooney@pjm.com

Review of Preliminary Summer 2024 Loads



Member Hotline

(610) 666-8980

(866) 400-8980

custsvc@pjm.com

**PROTECT THE
POWER GRID
THINK BEFORE
YOU CLICK!**



Be alert to
malicious
phishing emails.

Report suspicious email activity to PJM.
(610) 666-2244 / it_ops_ctr_shift@pjm.com

