



# Easement Education

Jonathan Thompson  
Interconnection Projects Department  
Interconnection Process Subcommittee  
March 22, 2024

## Site Control Term

		Generating Facility	Interconnection Facility	Interconnection Switchyard
<b>Submission 1</b> Application Phase	Full	<b>100%</b> Deed   Lease   Option (See Note 1)	<i>Not Required</i>	<i>Not Required</i>
<b>Term Requirement</b>		1 year from Application Deadline		
<b>Submission 2</b> Decision Point 1 (See Note 2)	Partial	<b>100%</b> Deed   Lease   Option	<b>50%</b> Deed   Lease   Option   Right-of-Way	<b>50%</b> Deed   Lease   Option
<b>Term Requirement</b>		1 year from last day of Phase 1		
<b>Submission 3</b> Decision Point 3 (See Note 3)	Full	<b>100%</b> Deed   Lease   Option	<b>100%</b> Deed   Lease   Option   Right-of-Way	<b>100%</b> Deed   Lease   Option (See Note 4)
<b>Term Requirement</b>		Additional 1 year from last day of Phase 3 (for Transition Cycles #1 and #2) Additional 3 years from last day of Phase 3 (for new Cycle)		

= 100% Site Control Required

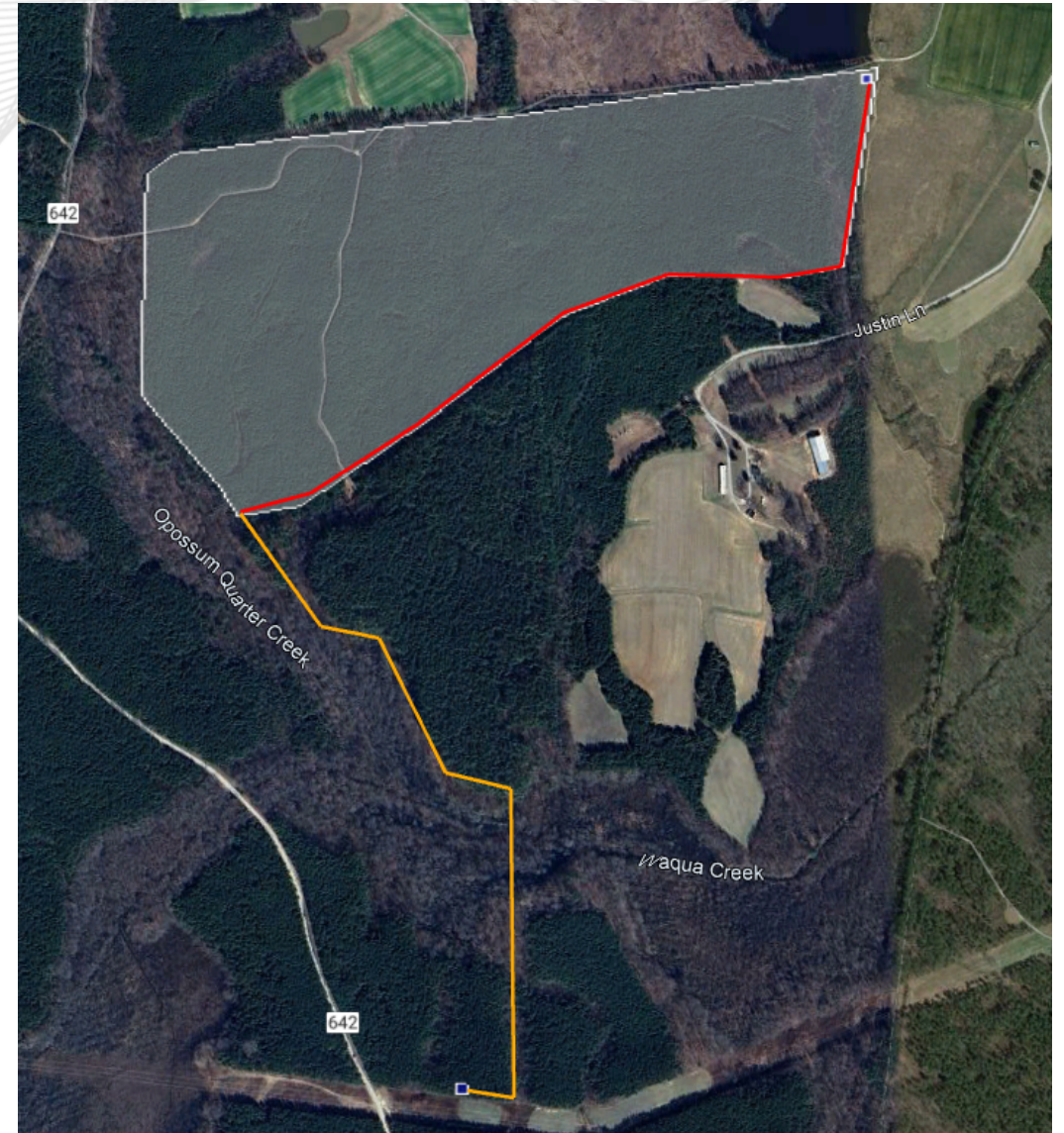
= 50% Site Control Required

- All site control must meet Tariff, Part VII, Subpart A, section 302 requirements
- Easement evidence must demonstrate the three key elements
  - Term
    - 1 year from the last day of Phase 1
  - Exclusivity
  - Conveyance

- Provide evidence of an easement granted to Project Developer demonstrating allowance for:
  - installation, operation, maintenance, repair and replacement of poles and fixtures for generator lead line
- Provide complete un-redacted copy of recorded easement
  - Redactions of financials allowed
- Easement grants the developer exclusive use and right to install, etc. within easement area
- Contains as exhibit a survey of the easement area depicting easement along with a legal metes and bounds description of the easement area



- Evidence must cover 50% of the linear distance of the easement corridor, displayed in orange
  - Easements needed beyond Generating Facility
- Generator tie utilizing existing Generating Facility does not meet requirements
- Site plan must match provided site control evidence



- 50% site control of interconnection switchyard must be provided with DP1 submission
- Evidence via deed, lease, option to lease or purchase
  - Memorandums are not acceptable
  - Evidence of intent to control Site not acceptable
- Many are on Generating Facility Sites



# Interconnection Switchyard Acreage

<b>kV Level</b>	<b>Acreage Required</b>	<b>Acreage at DP1</b>
115 kV and below	4 acres	2 acres
230 + 345 kV	6 acres	3 acres
500 kV	8 acres	4 acres

Presenter:  
Jonathan Thompson

[Jonathan.thompson@pjm.com](mailto:Jonathan.thompson@pjm.com)



### Member Hotline

(610) 666 – 8980

(866) 400 – 8980

[custsvc@pjm.com](mailto:custsvc@pjm.com)