

# Gen Checkout

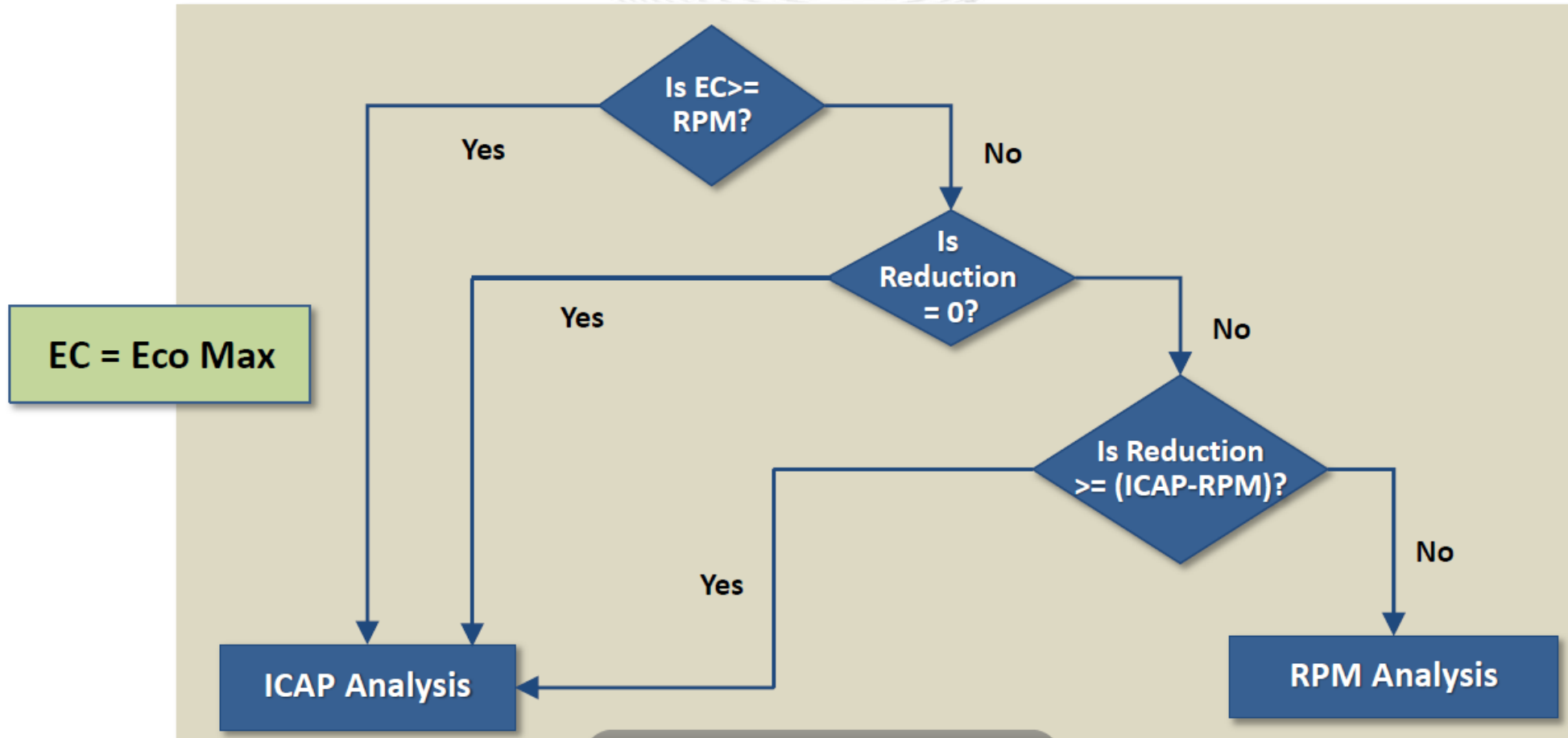
July 18<sup>th</sup>, 2017

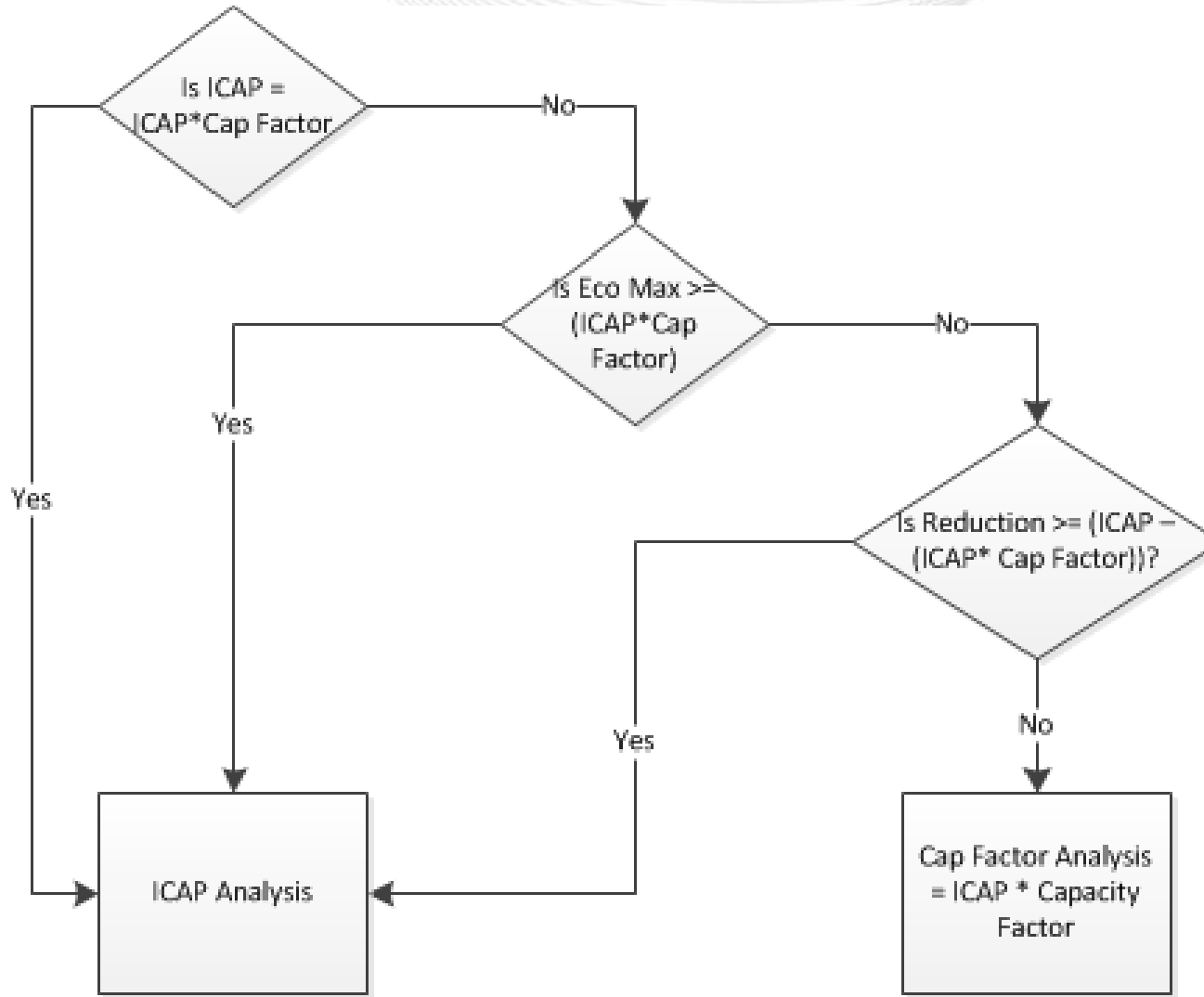
Dispatcher Training Subcommittee



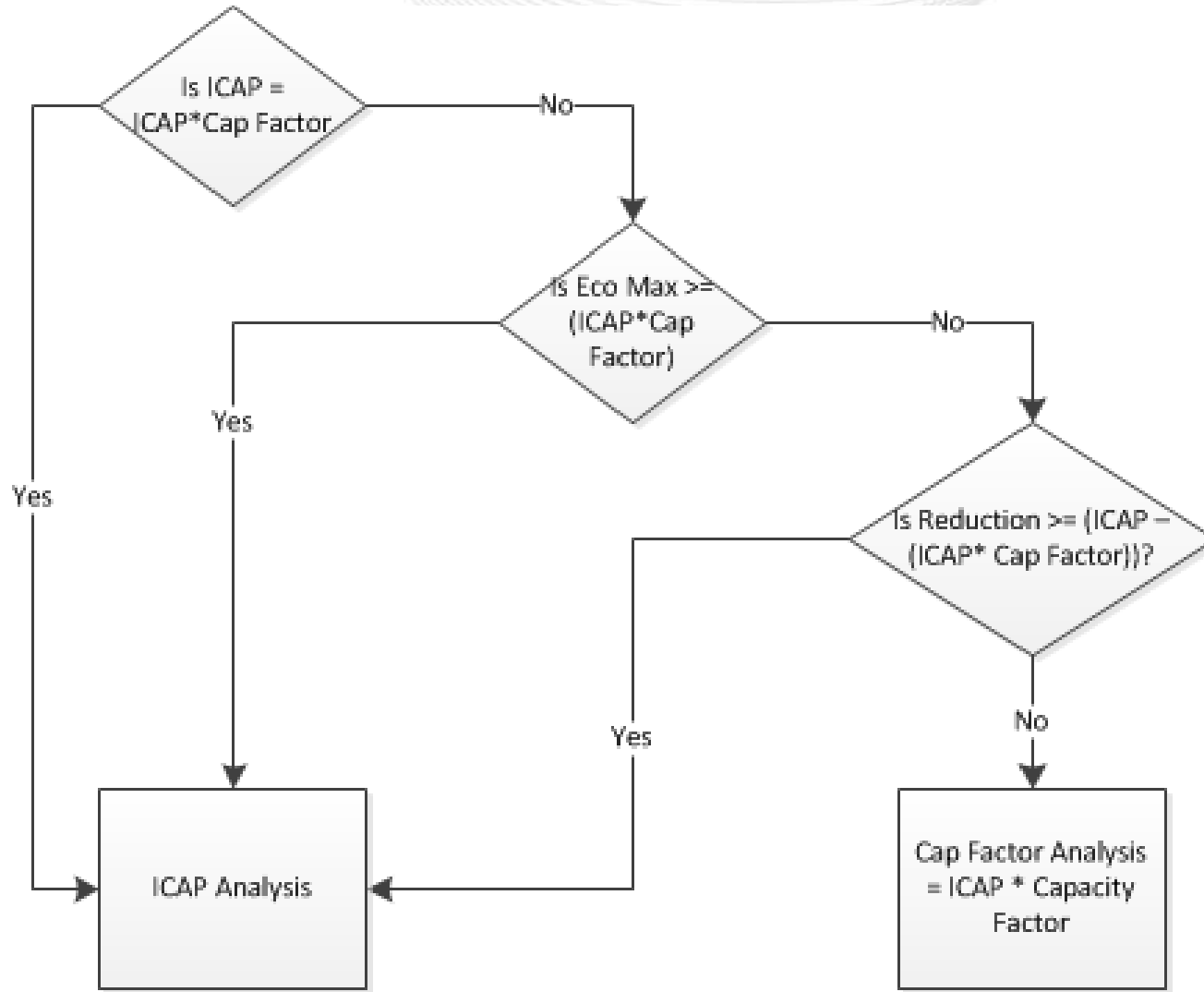
- Program to compare unit availability and bid data to ensure accurate market data and capacity/reserve projections
- Previously calculated ICAP and RPM analysis in parallel. Program chose one of the two analysis methods when Gen Checkout is initiated.

- To enhance operational awareness and planning, PJM wants to know what is available (energy & capacity) on a unit regardless of its commitment.
- PJM replaced RPM analysis with a “Capacity Factor” Analysis.
- Anticipate minimal impact as Gen Checkout selects ICAP analysis majority of the time.



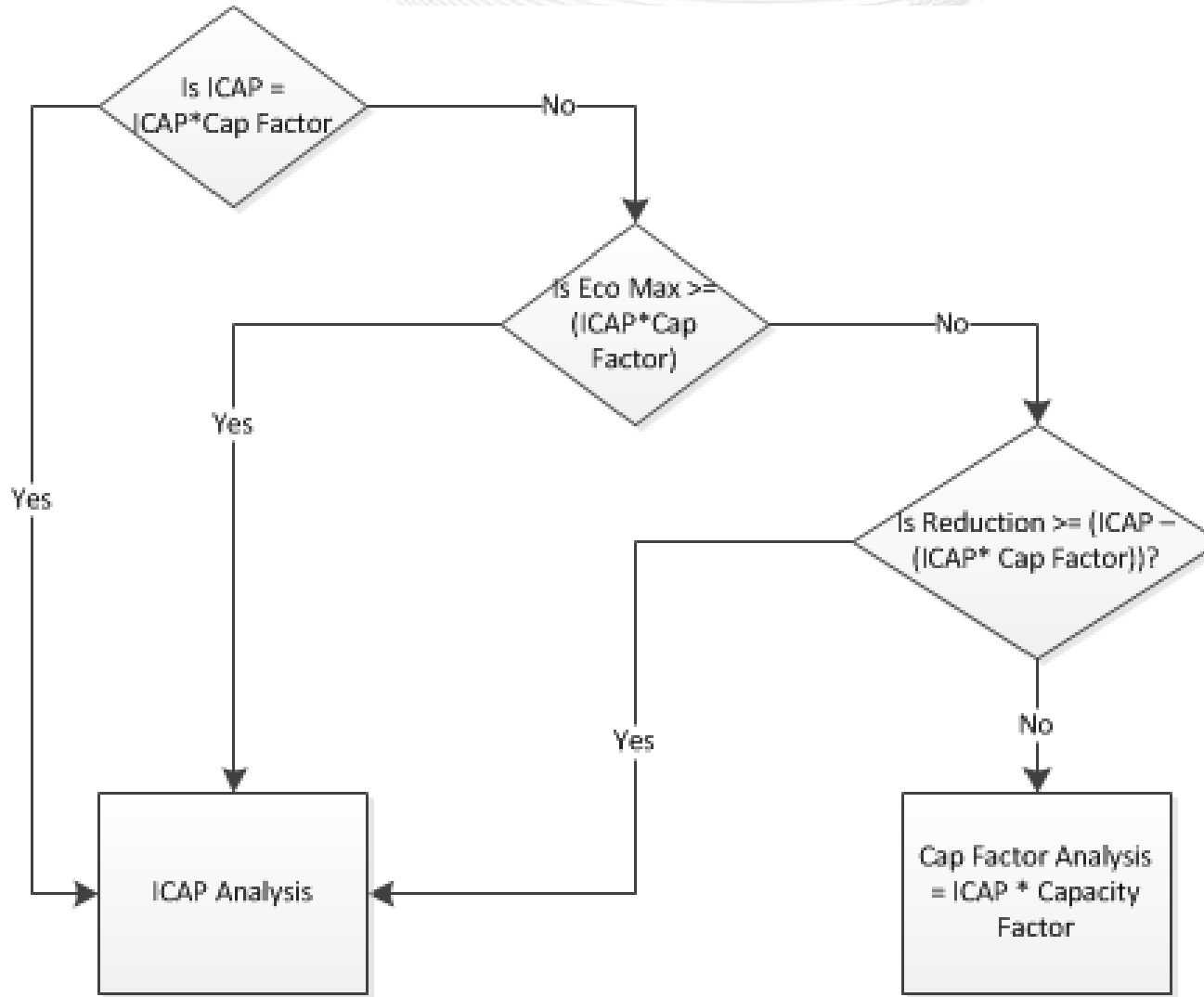


ICAP = eDART ICAP  
 Cap Factor Non-Renewable = 1  
 Cap Factor Renewable < 1



Steam Unit  
 eDART ICAP = 1000 MWs  
 Cap Factor Non-Renewable = 1  
 ICAP \* Cap Factor = 1000 MWs

Gen Checkout uses ICAP analysis



Wind Unit  
 eDART ICAP = 1000 MWs  
 Cap Factor Wind = 13%  
 ICAP \* Cap Factor = 130 MWs

Eco Max = 100 MWs  
 Outage = 200 MWs

Gen Checkout will use Cap  
 Factor Analysis

## Contact Info

Ray Lee

Generation Department

610-666-4608

Ray.Lee@pjm.com