

2011 Preliminary Emergency Load Management (ILR/DR) and Economic Demand Response summary

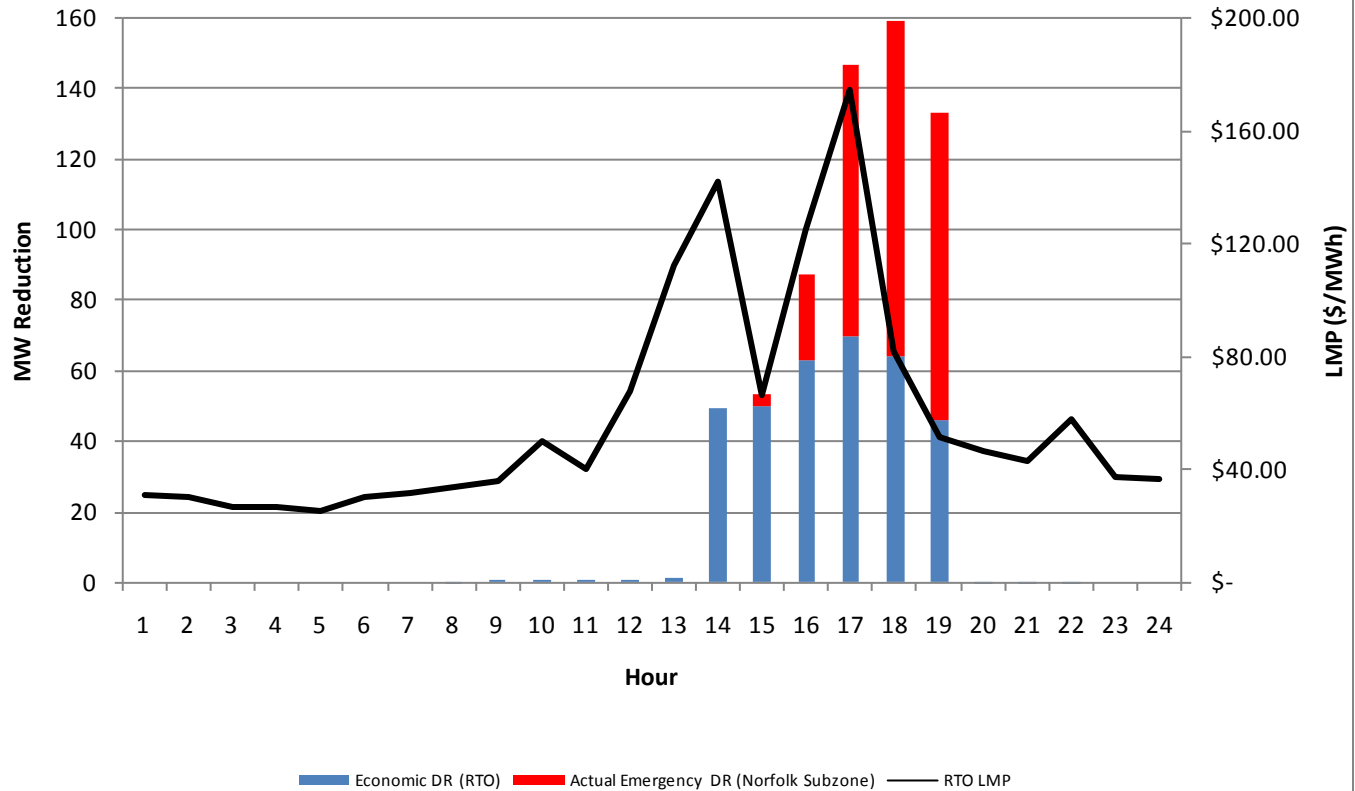
DRS

October 27, 2011

- PJM declared 3 emergency events in 2011
 - 10/11 DY events called after 2010 summer mandatory capacity compliance period
 - 5/26/11 (235 MW of nominated capacity) – sub zonal event for Norfolk area of Dominion zone
 - 41% of nominated capacity realized
 - 81% of expected reductions realized
 - 5/31/11 (3,500 MW of nominated capacity) - Midatlantic and Dom zones (Long lead time only)
 - 41% of nominated capacity realized
 - 83% of expected reductions realized
 - 11/12 events called during mandatory summer capacity compliance period
 - 7/22/11 (2,361 MW of nominated capacity) – BGE (short and long lead) and JCPL, Meted, PECO, DPL and DLCO (long lead)
 - PRELIMINARY RESULT - 90% of nominated capacity realized
- Comprehensive Load Management Performance report is published on annual basis by Jan of each year
 - Includes final event and test performance results
- PJM had very limited Economic Demand Response activity

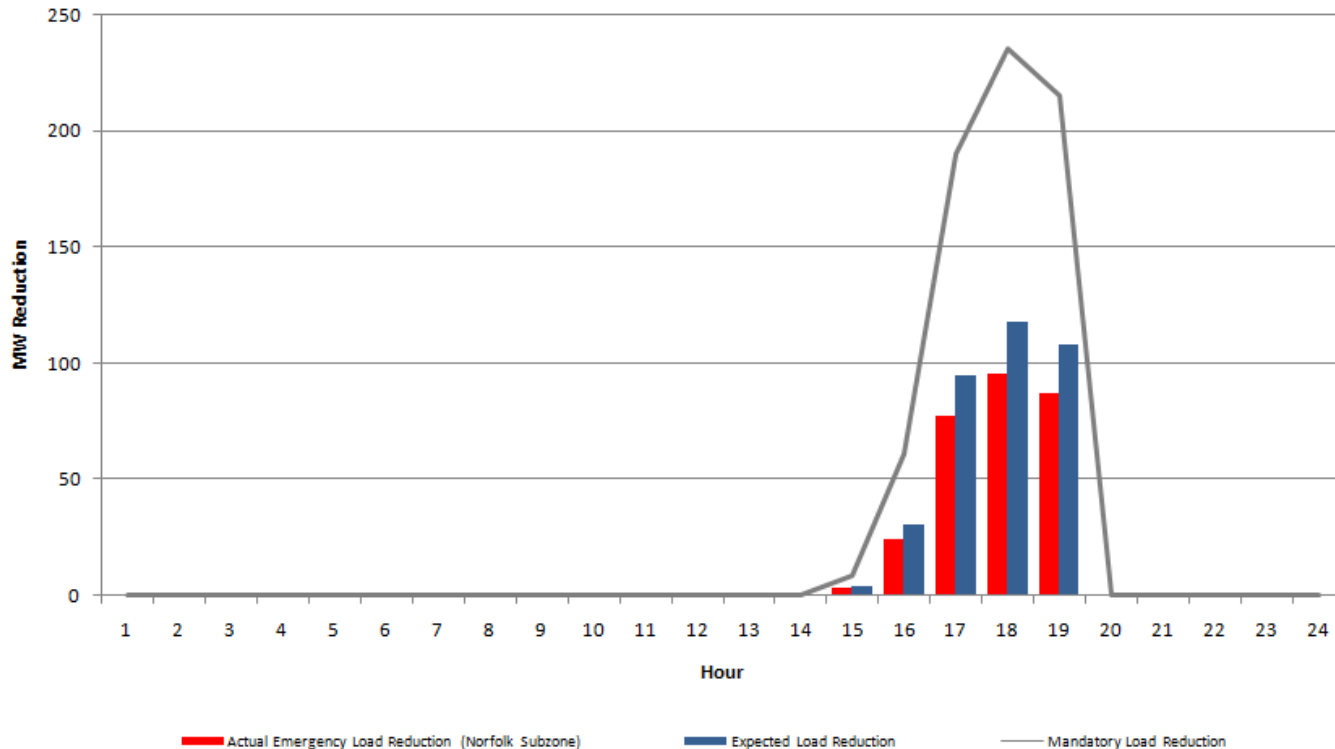
- 10/11 DY Emergency Events (5/26, 5/31) after mandatory summer 2010 compliance period
- 11/12 DY Emergency Event (7/22)
- 7/21/11 economic activity (no emergency events but very high load day)

Actual Demand Response in PJM May 26, 2011



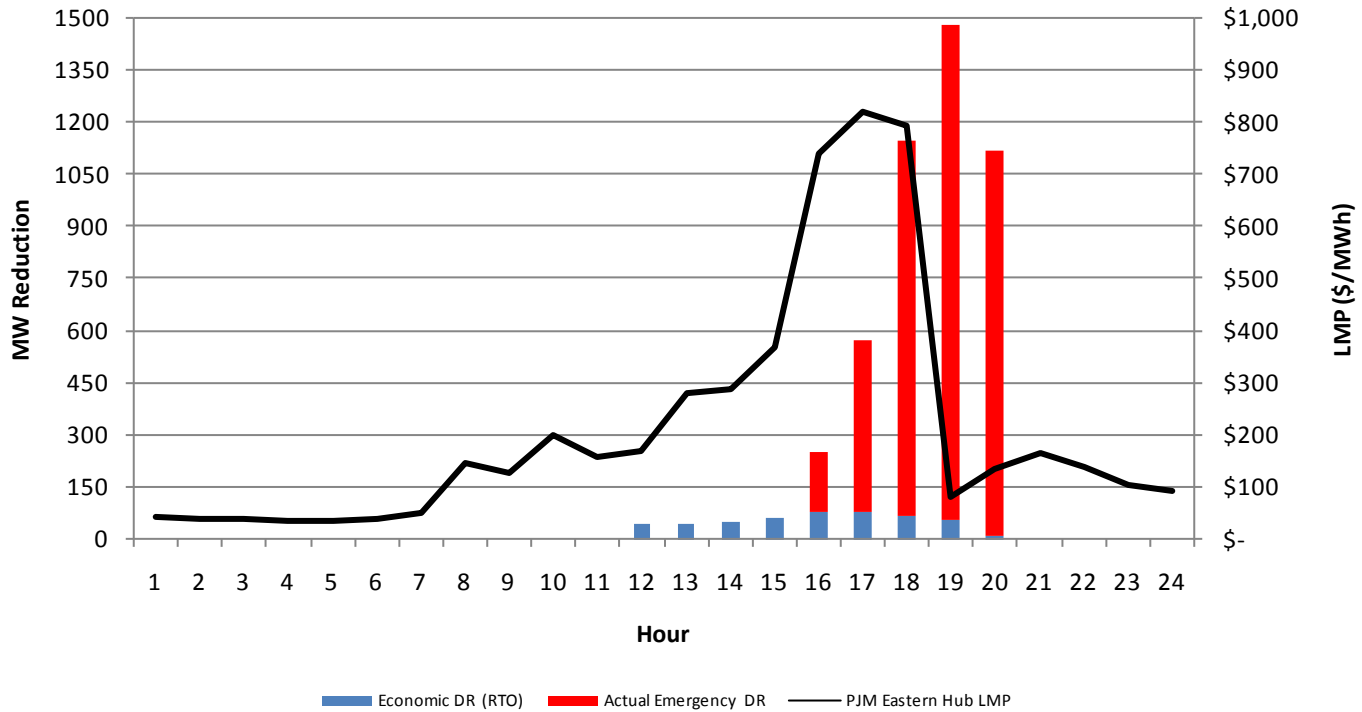
Emergency Event reductions (non-summer period)

**Actual¹, Expected² and Mandatory³ Load Reductions
May 26, 2011 Emergency Load Management Event
Norfolk area of Dominion Zone**

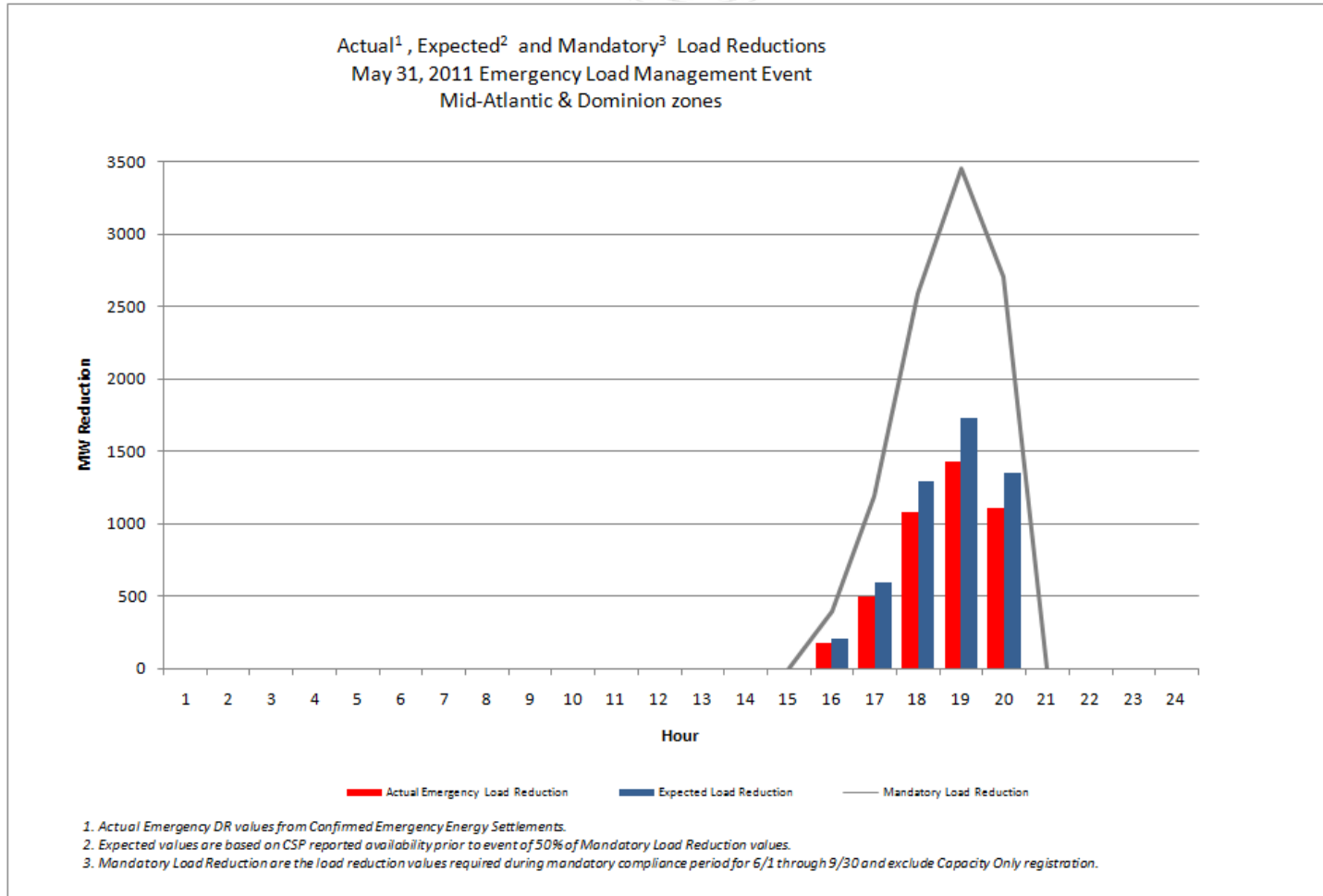


1. Actual Emergency DR values from Confirmed Emergency Energy Settlements.
 2. Expected values are based on CSP reported availability prior to event of 50% of Mandatory Load Reduction values.
 3. Mandatory Load Reduction are the load reduction values required during mandatory compliance period for 6/1 through 9/30 and exclude Capacity Only registration.

Actual Demand Response in Mid-Atlantic and Dominion Zones May 31, 2011

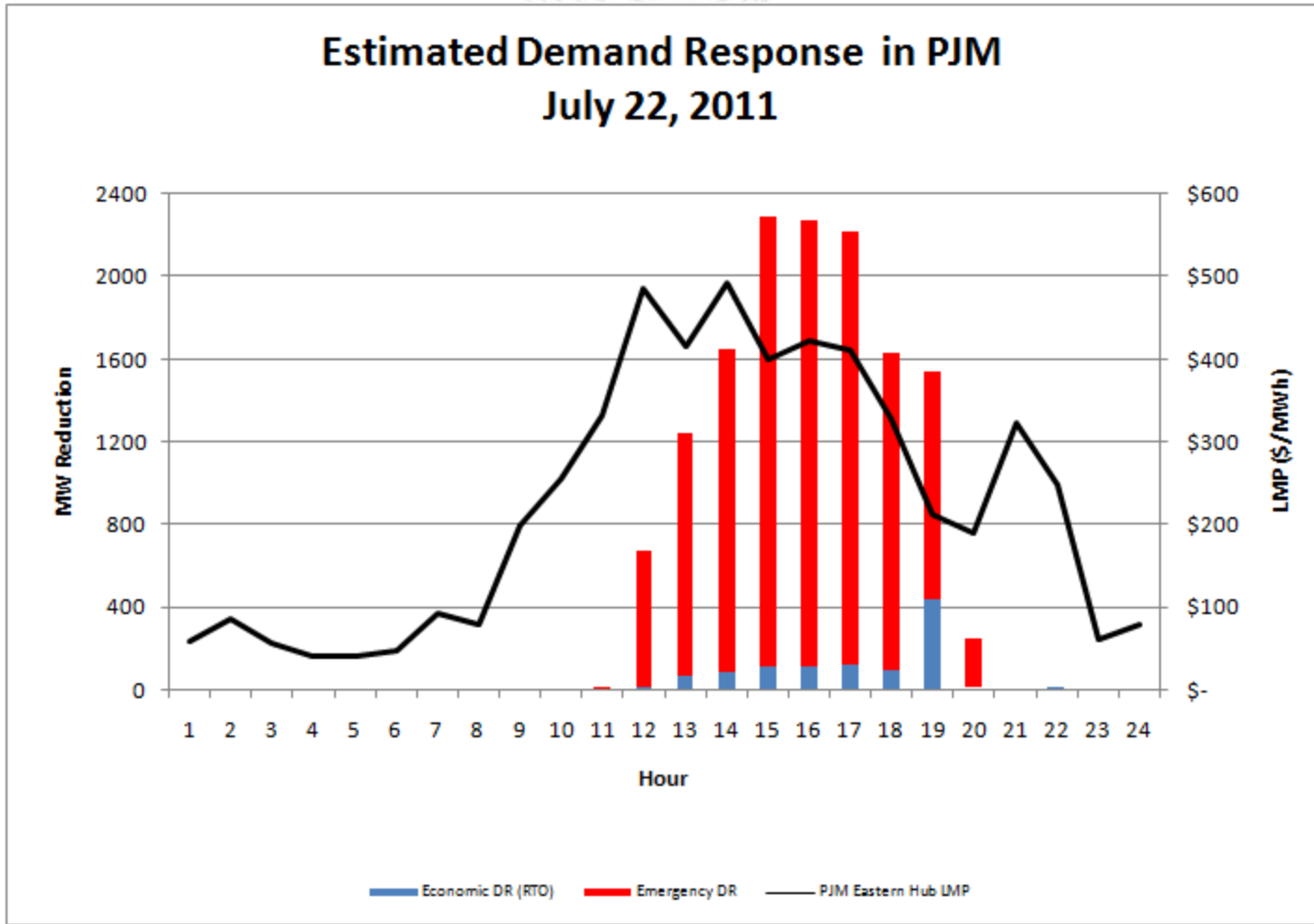


Emergency Event reductions (non-summer period)

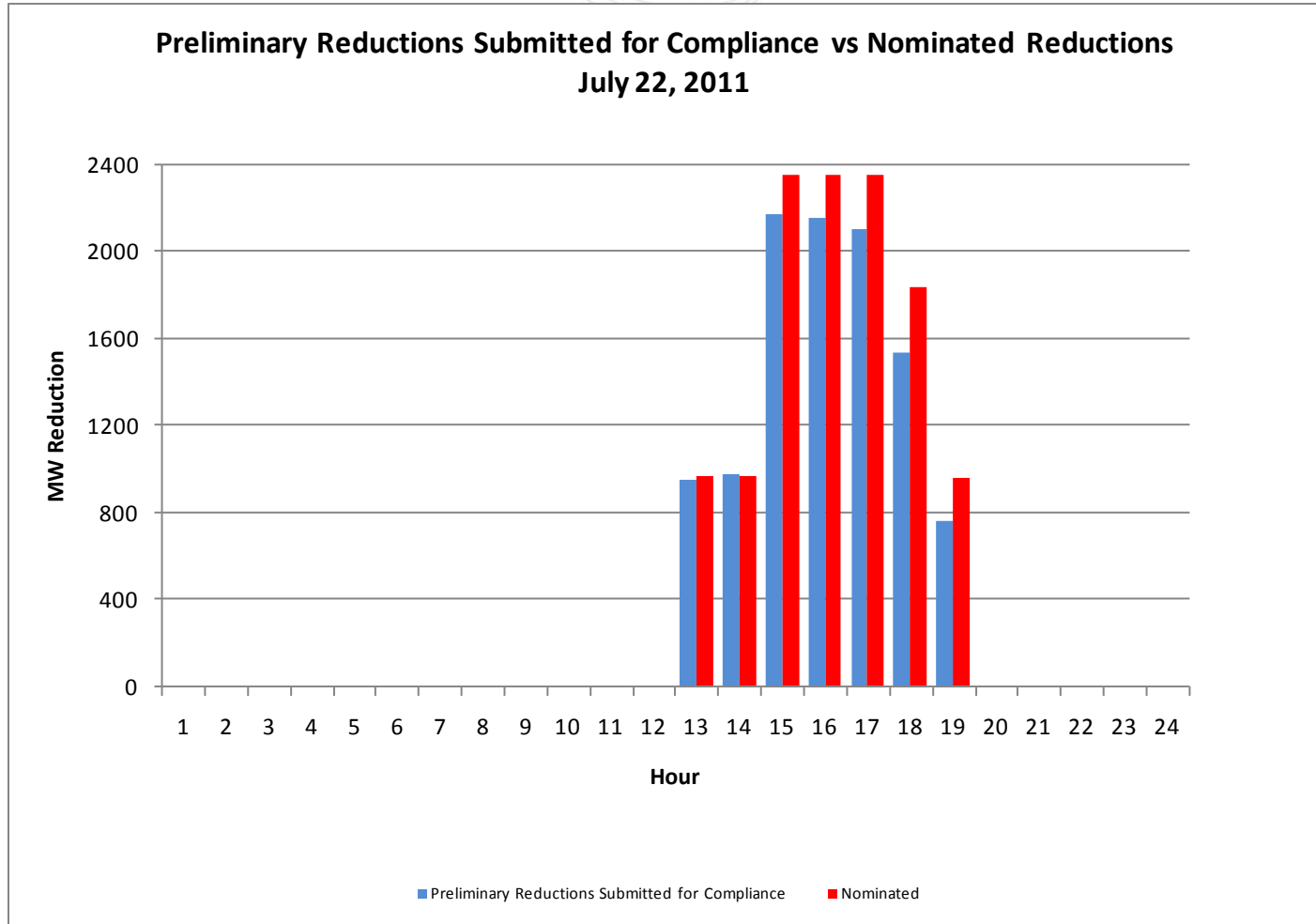


- 10/11 DY Emergency Events (5/26, 5/31) after mandatory summer 2010 compliance period
- **11/12 DY Emergency Event (7/22)**
- 7/21/11 economic activity (no emergency events but very high load day)

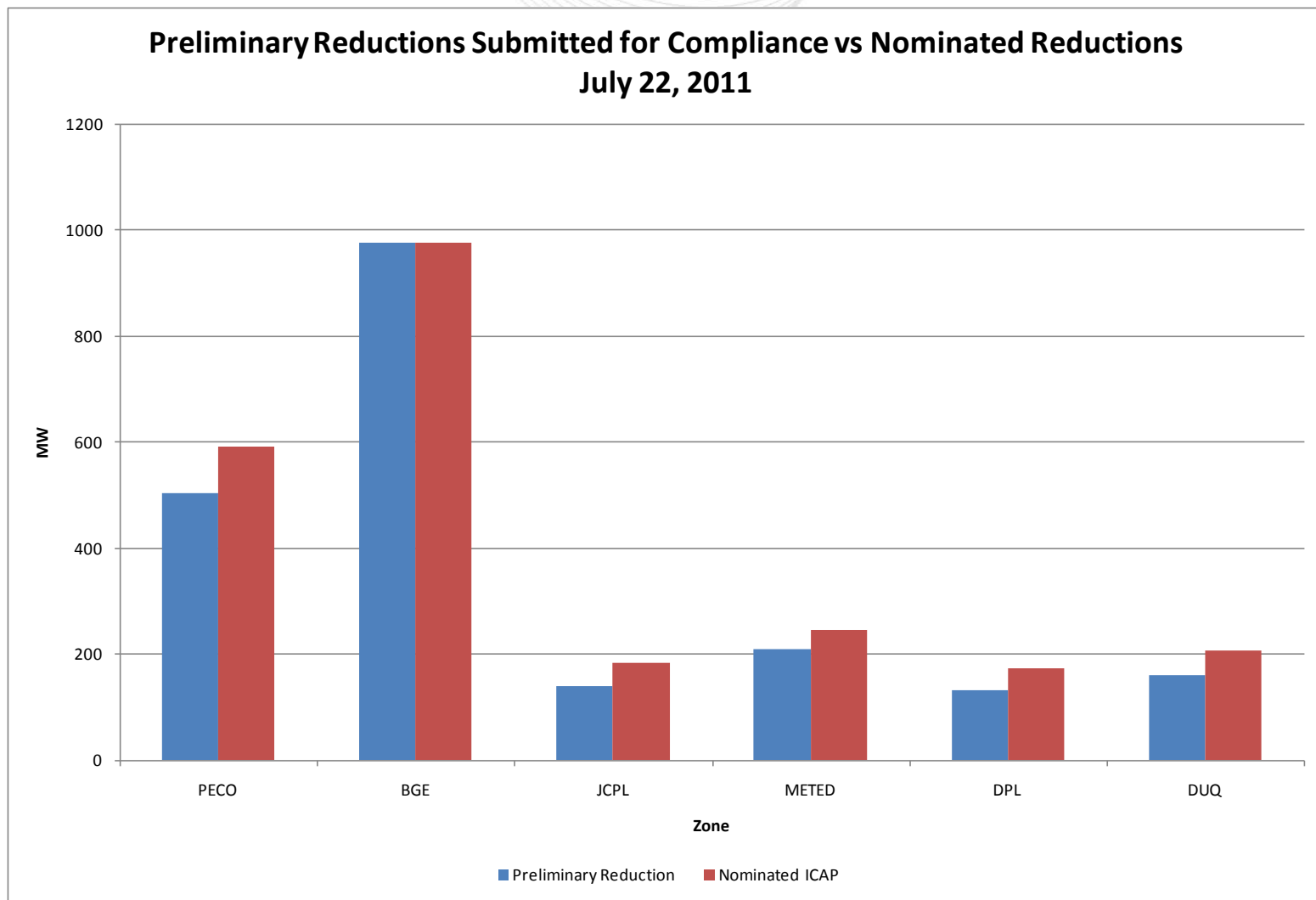
Estimated Demand Response in PJM July 22, 2011

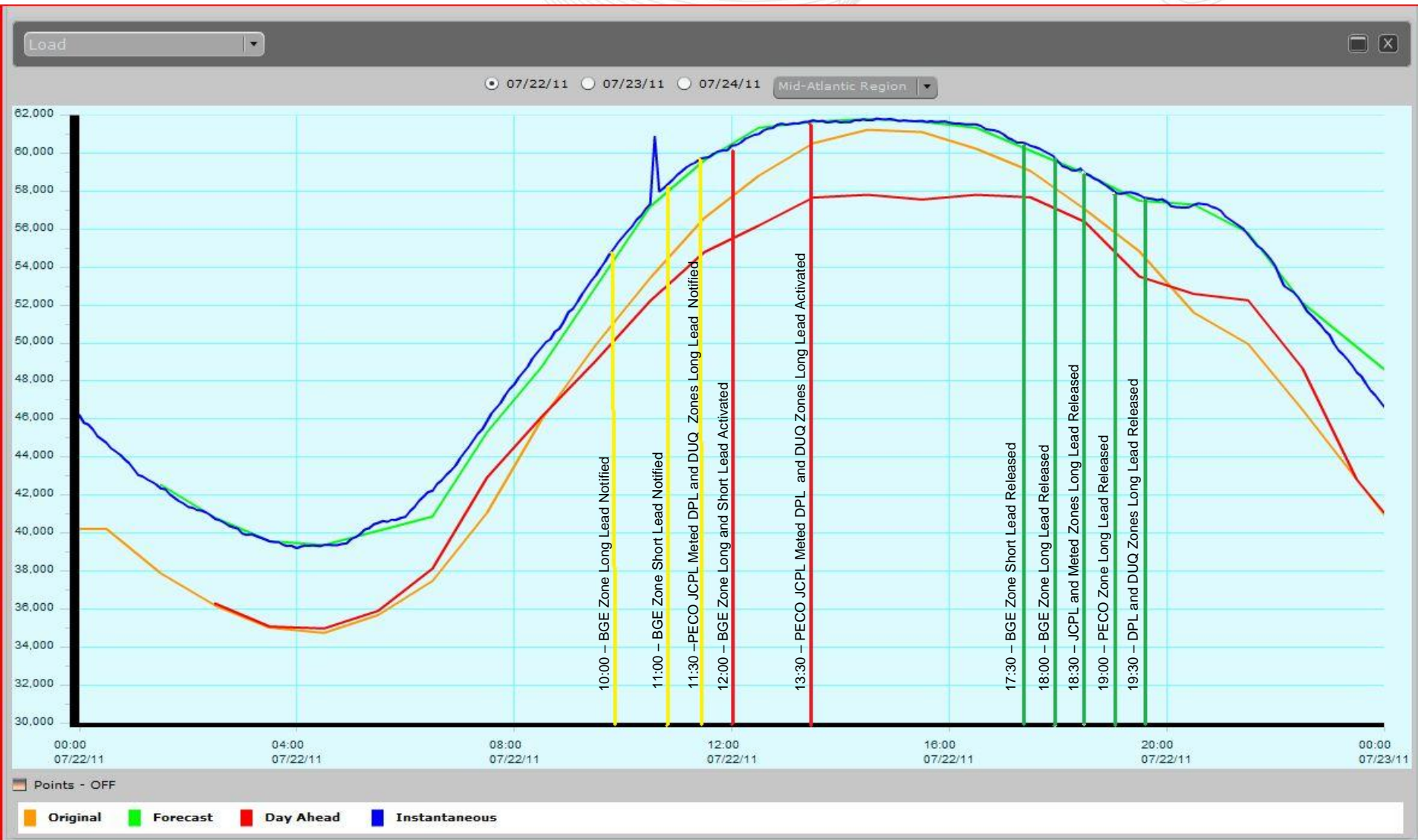


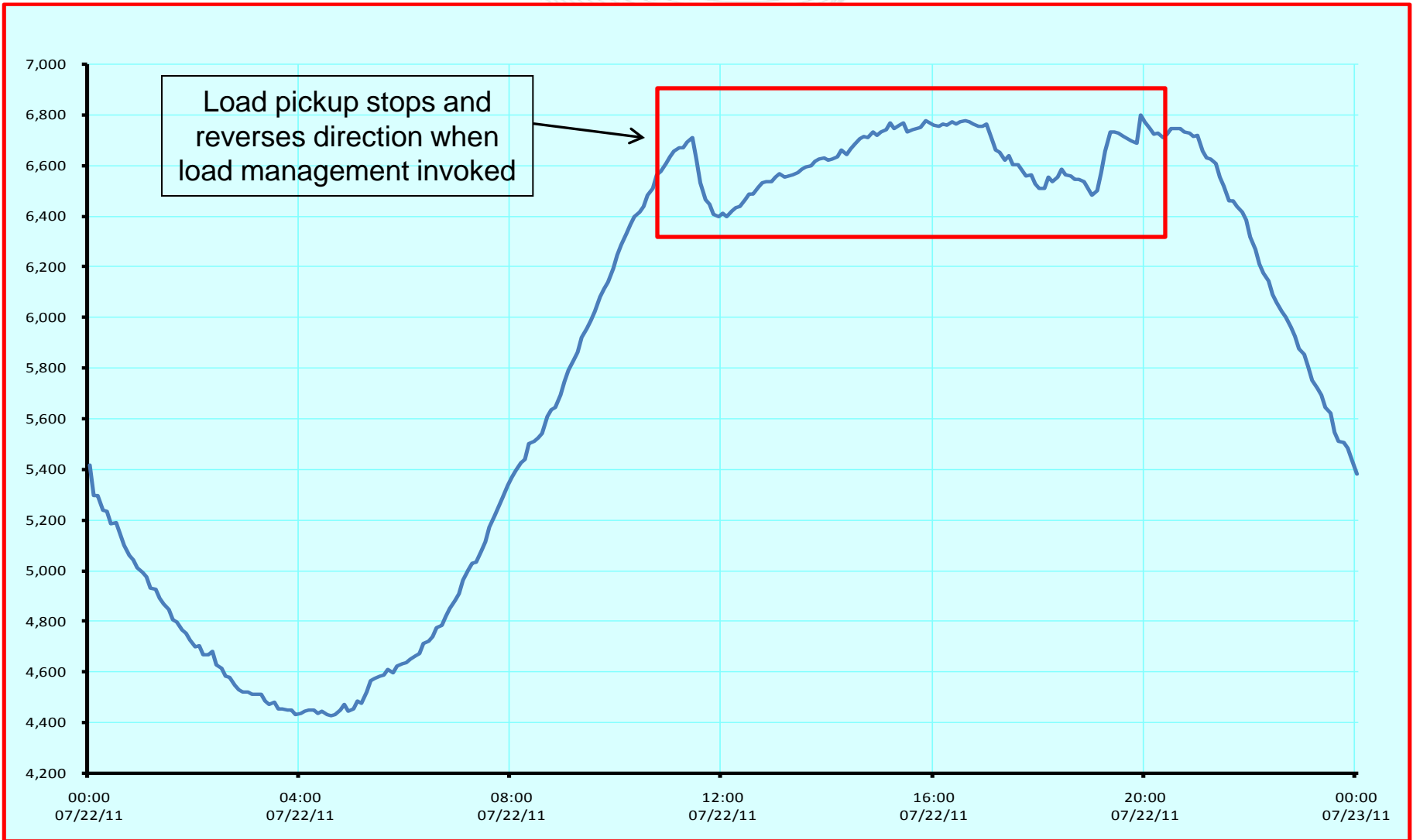
Preliminary Emergency event load reductions



Preliminary Emergency event load reductions by zone



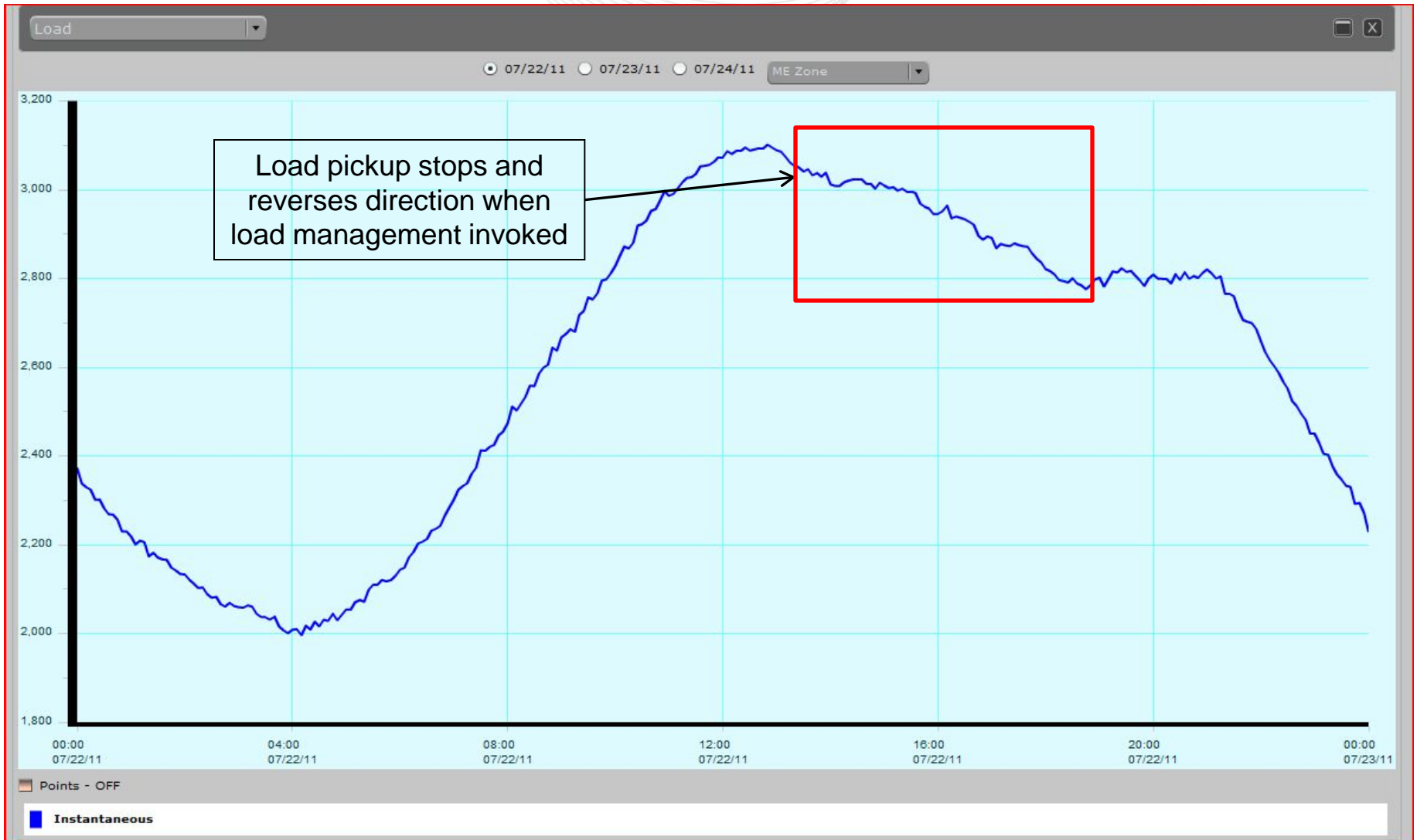




Instantaneous PECO Zonal Load 7/22/11



Instantaneous Meted Zonal Load 7/22/11



- 10/11 DY Emergency Events (5/26, 5/31) after mandatory summer 2010 compliance period
- 11/12 DY Emergency Event (7/22)
- 7/21/11 economic activity (no emergency events but very high load day)

Demand Response in PJM July 21, 2011

