

# Installing Certificates Java and .Net

Sheshank Mallu  
As of September 26, 2024

- [Download](#) the new DigiCert Intermediate Certificate
- Save the file with the name intermediate.pem. Make a note of the location of the file for future reference. For example, c:\windows\temp
- Next, [download](#) the root certificate
- Save the file with the name root.pem. Make a note of the location of the file for future reference. For example, c:\windows\temp

To import the certificate files for Java applications and utilities, find where Java is installed.

- If you already know where Java is installed, you can ignore the next steps and skip to step 2.
- On a Unix system, you can run one of these commands - “which java”, “echo \$JAVA\_HOME” or “locate java”.
- On a Windows system, you can run the “echo %JAVA\_HOME%” command.
- For either of these, make a note of the path to the Java installation.

Once you have the path to the Java installation, run the following commands to install the certificates:

- `cd <path_to_java_from_step_1>`
- `cd bin`
- `keytool -import -alias GeoTrustTLSRSACAG1 -trustcacerts -file <path_to_intermediate.pem> -keystore <path_to_java_from_step_1>\jre\lib\security\cacerts`

*Note: for unix systems you may need to execute this as `./keytool`*

- `keytool -import -alias DigiCertGlobalRootG2 -trustcacerts -file <path_to_root.pem> -keystore <path_to_java_from_step_1>\jre\lib\security\cacerts`

*Note: For both of these commands, you will be prompted to enter the keystore password:  
enter your configured keystore password (the default is 'changeit')*

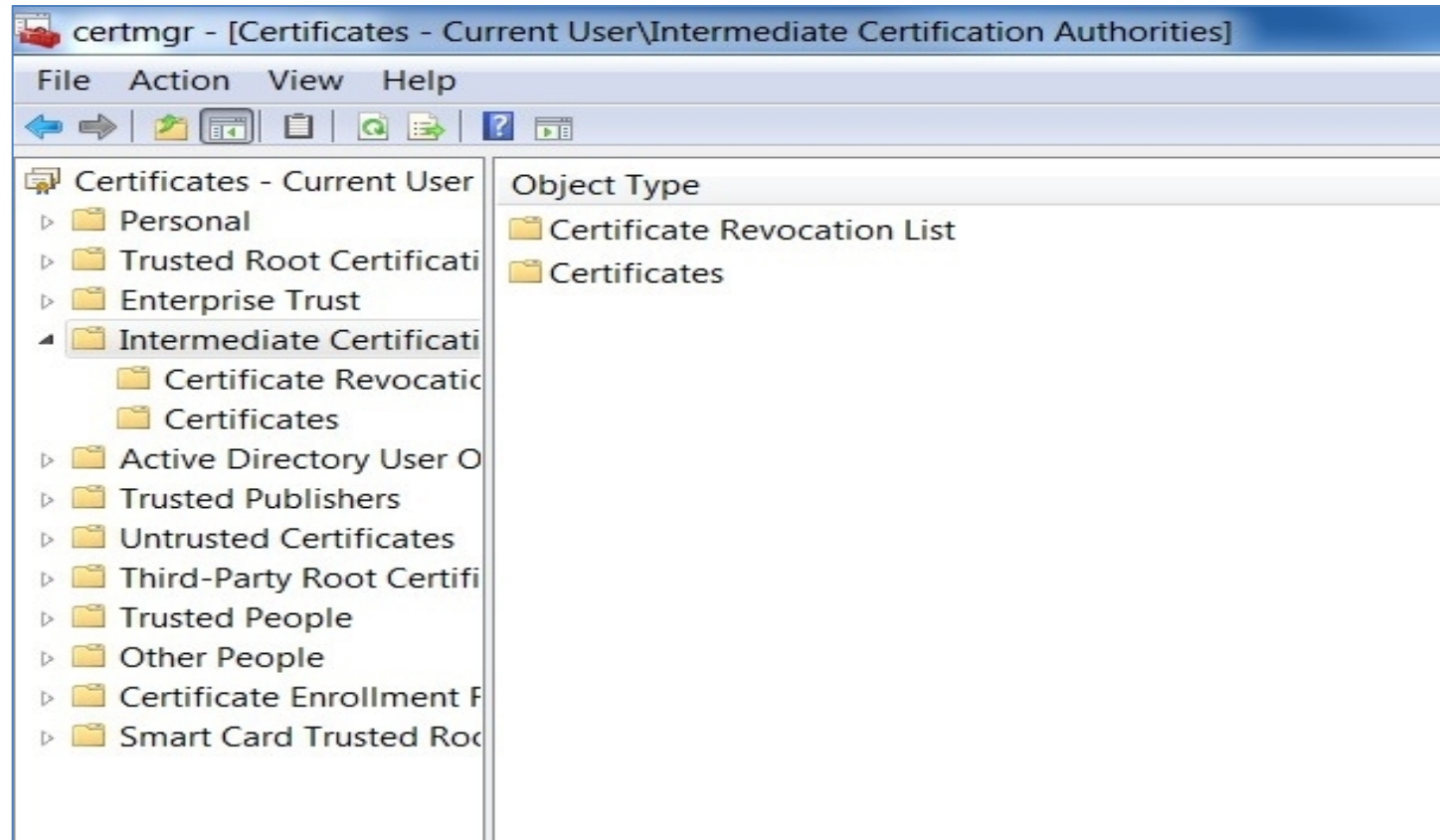
*Note: If you see an error "already exists," this means you already have the certificates, and can skip that*

To import the certificate files for .NET applications:

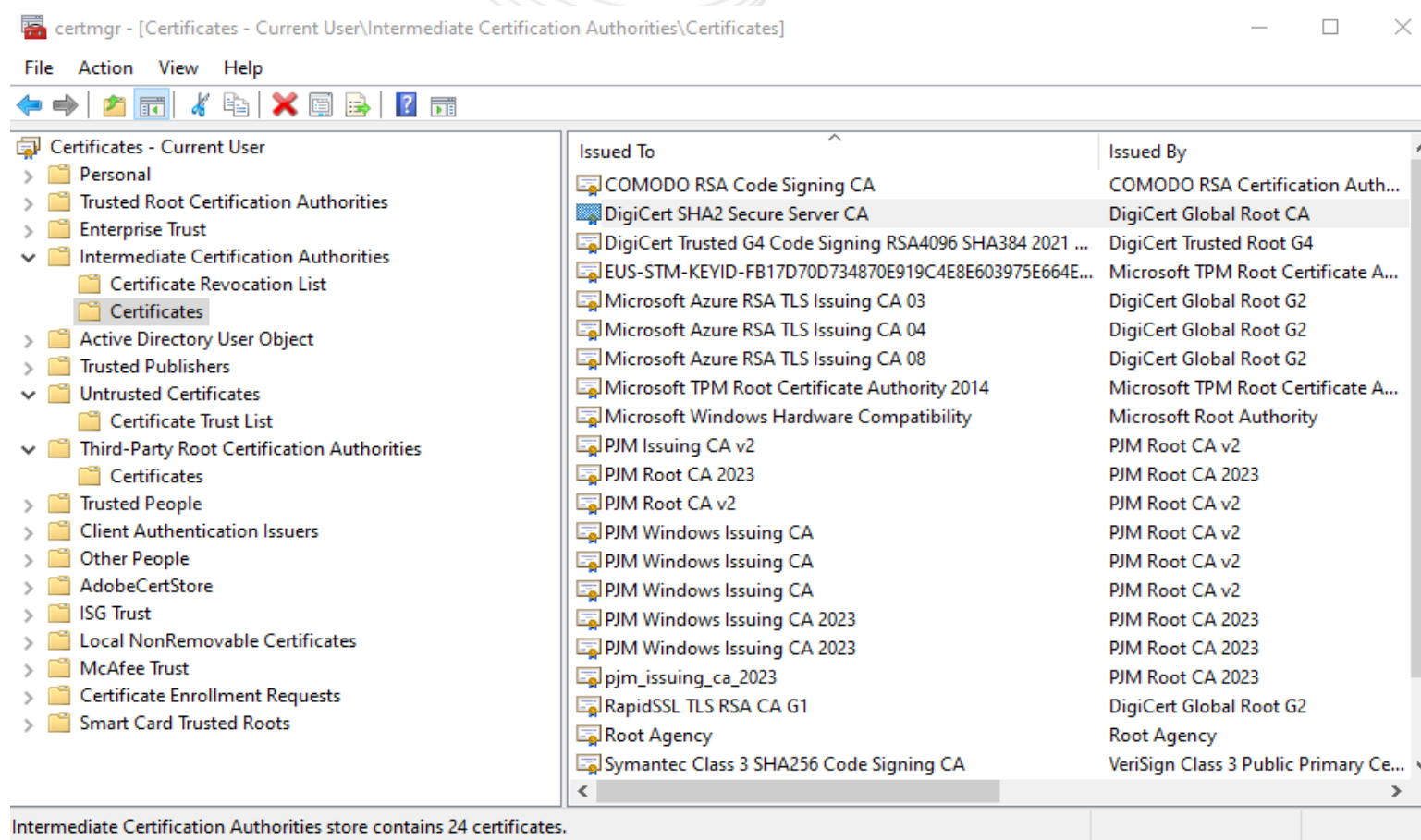
- Click **Start**, click **Run**, type certmgr.msc, and then click **OK**.

*Note: You may need administrative permissions to open certificate manager in Microsoft Management Console snap-in.*

Expand Certificates (local computer), expand Trusted Root Certification Authorities and then click **Certificates**:



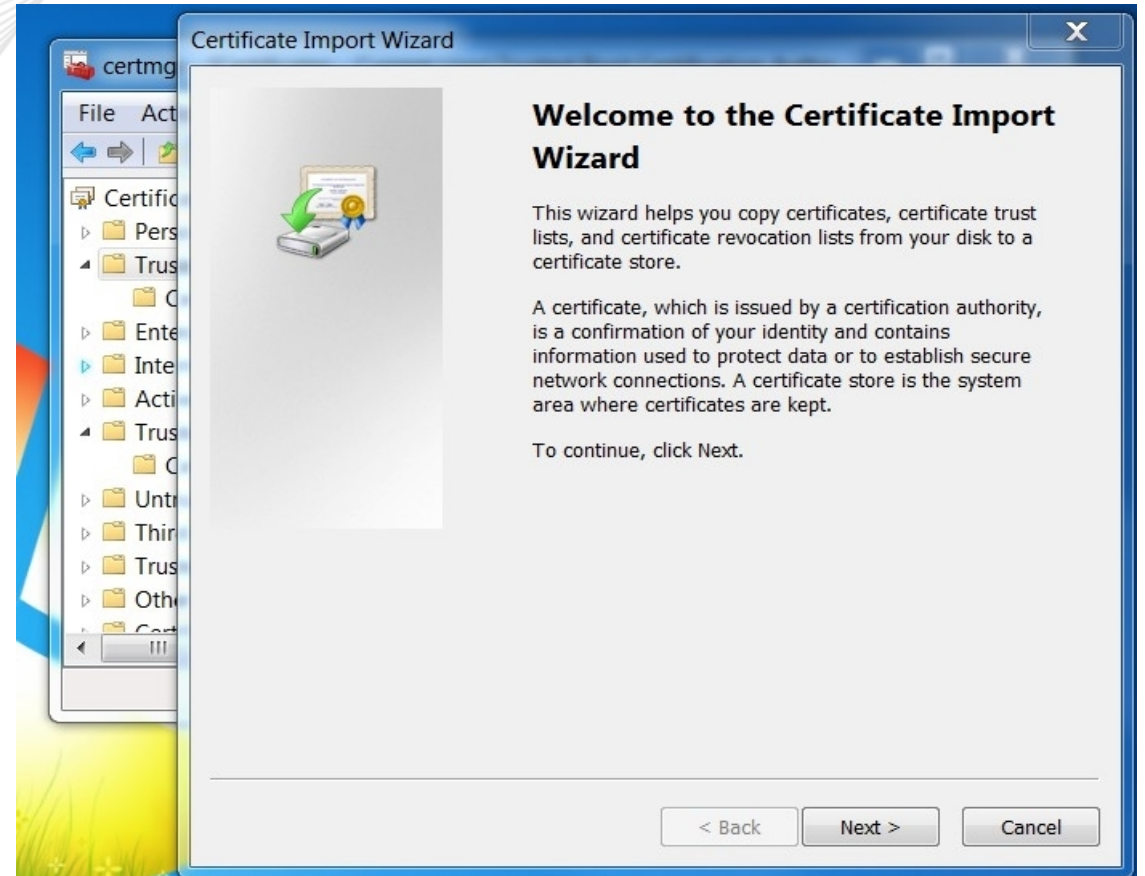
Confirm the intermediate certificate is not already listed – DigiCert SHA2



If not listed, expand **certificates (local computer)**, expand **Intermediate Certification Authorities** right- click **Certificates**, click **All Tasks**, and then click **Import**.

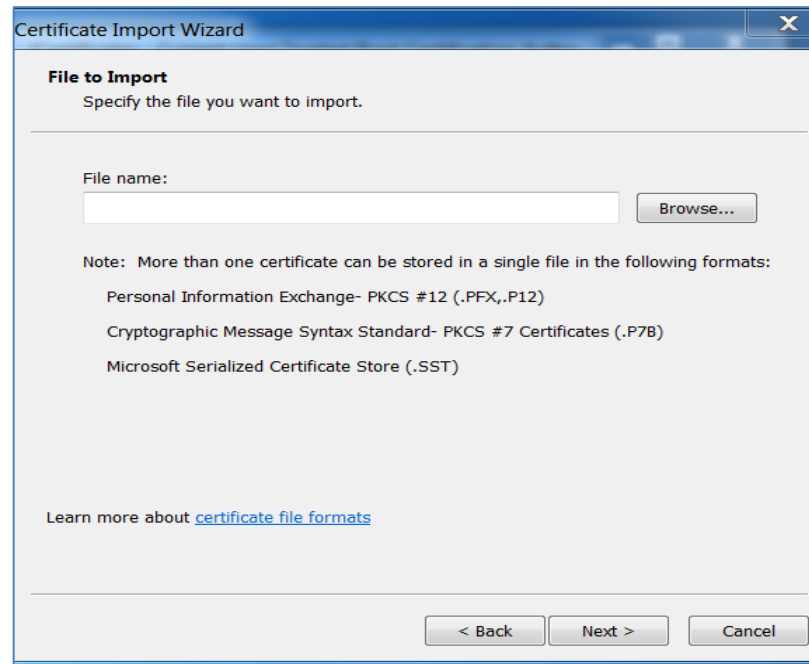
**Import** the intermediate certificate.

- In the **Certificate Import Wizard** dialog box, figure 5, click **Next**.





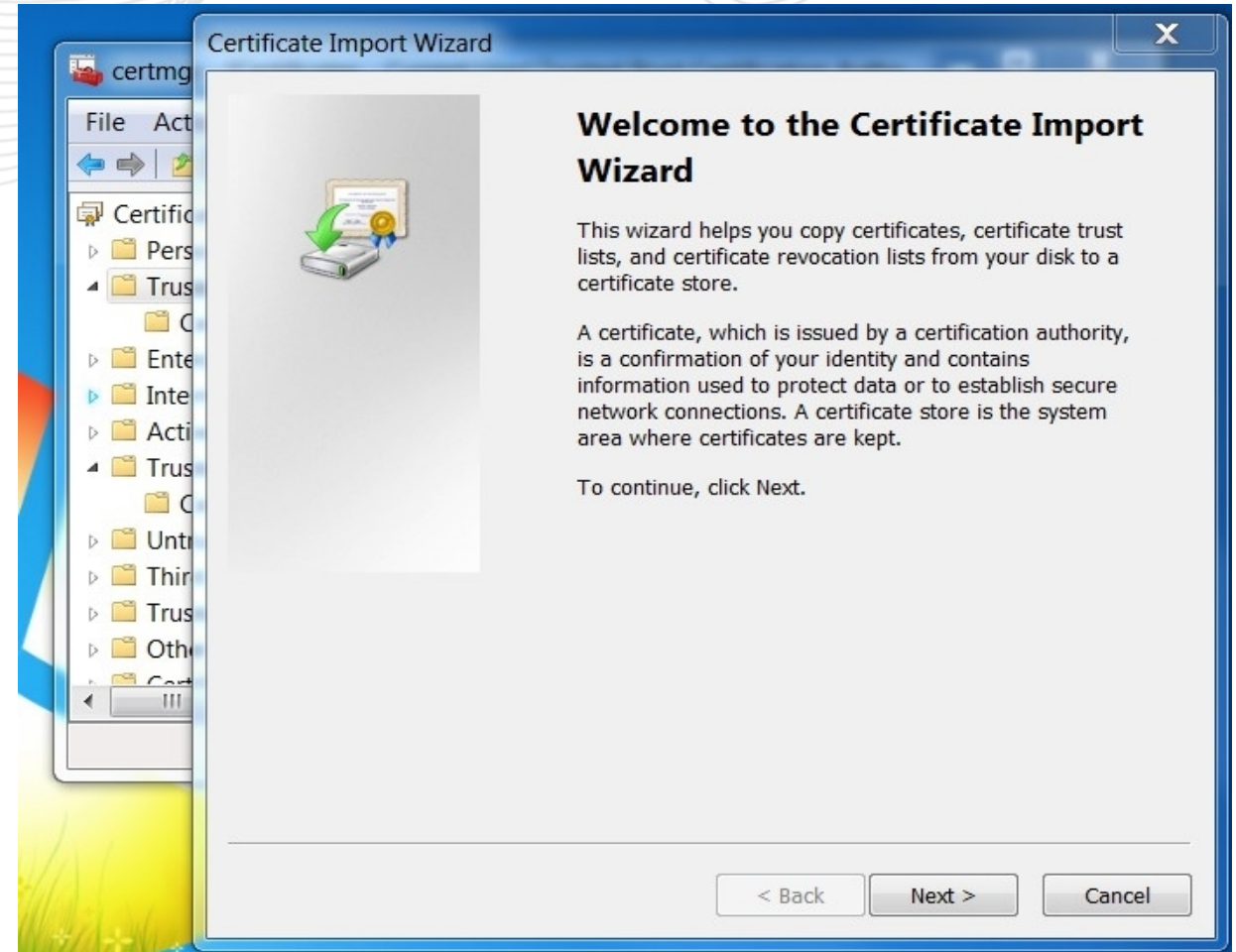
In the **File name** box, give the path of the intermediate certificate authority file downloaded in the first section of this document. For example, `c:\windows\temp\intermediate.pem`



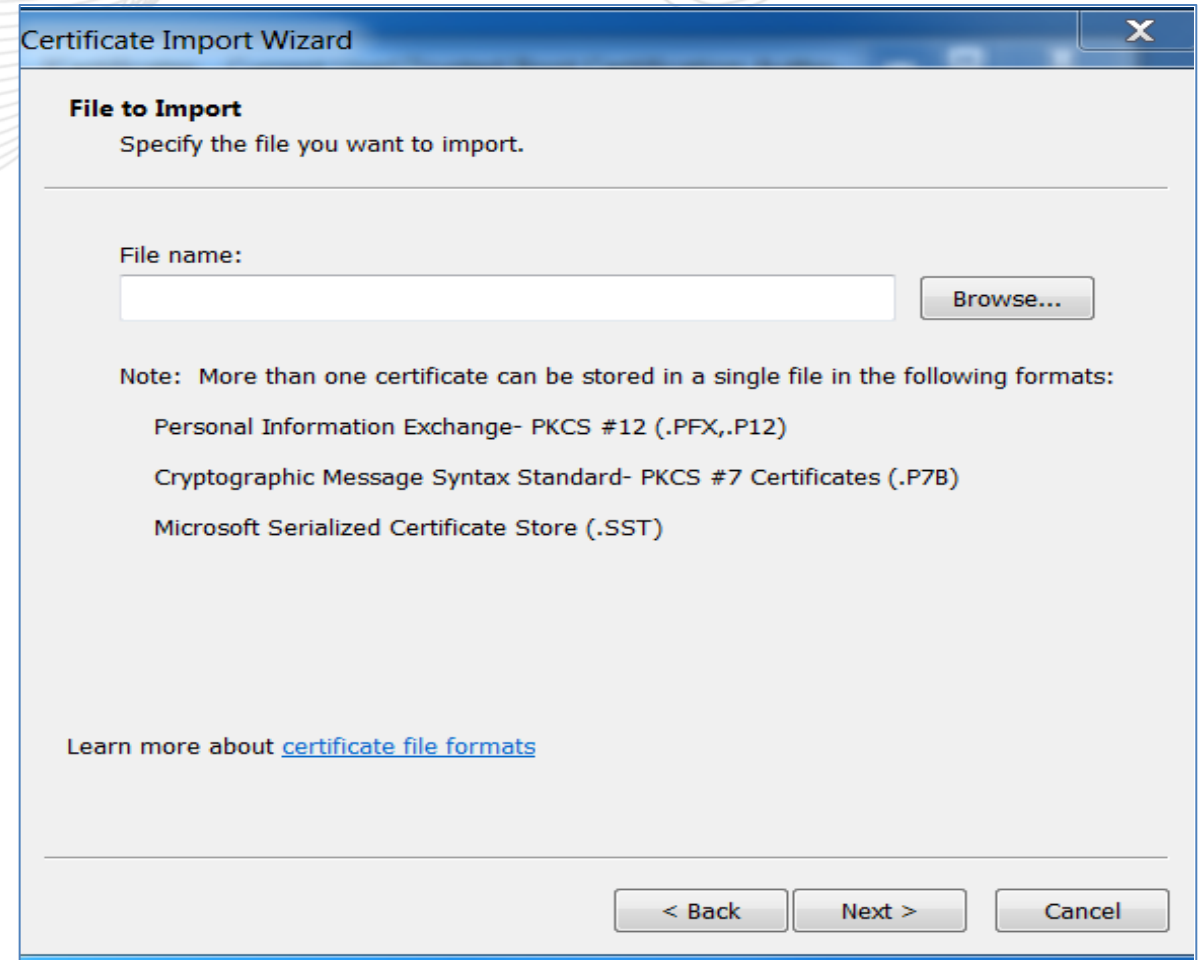
- Click **Next** two times.
- Click **Finish**, and then click **OK**. You should see a message appear 'The import was successful'.

- ***Import the Root Certificate***
- Expand **Certificates (local computer)**, expand **Trusted Root Certification Authorities**, and then click **Certificates**.
  - In the right pane, confirm that the certificate for ‘DigiCert Global Root CA’ is not listed.
  - If not listed, **import** the root certificate.
  - **Expand Certificates (local computer)**, right-click **Trusted Root Certification Authorities**, click **All Tasks**, and then click **Import**.

- **Import** the root certificate
- In the **Certificate Import Wizard** dialog box, click **Next**.



In the **File name** box, give the path of the root certificate authority file downloaded in the first section of this document. For example,  
c:\windows\temp\root.pem



- Click **Next** two times.
- Click **Finish**, and then click **OK**. You should see a message appear 'The import was successful'.