



eDART March 2017 Release Enhancements

eDART User Group Meeting
3/02/2017



- Updates from January 30th Meeting
(<http://www.pjm.com/~media/committees-groups/user-groups/edartug/20170130/20170130-edart-ug-gen-presentation.ashx>)
- Updates to Transmission Outage Cause Types
- March 2017 Release Enhancements
- eDART Refresh
- Future Enhancements
- Question and Answer Resolution Session

- Various implementation options discussed:
 - Full submission upload + additional downloads
 - Step-by-step submission upload + additional downloads
 - Downloads Only (review and report)
 - Web UI only; No XML interaction
- Due to limited response on preference, XML implementation deferred.
 - Consideration for future release if interest is expressed.
- Retirement of current email method moved to **June 1, 2017**.

Option	Number of Schemas	Pros	Cons
<p>1: Full Submission Upload: Unit & all ticket data submitted at same time.</p>	<p>2 Schemas</p> <ol style="list-style-type: none"> 1. gentic_rtr 2. rtr_status_change 	<ol style="list-style-type: none"> 1. Only 1 file upload per unit 	<ol style="list-style-type: none"> 1. Large XML file. 2. Data analyzed line by line; entire upload rejected at first data validation failure
<p>2. Step by Step Submission Upload: Uploads performed in steps, mimicking Web UI</p>	<p>4 Schemas</p> <ol style="list-style-type: none"> 1. newgentic_rtr 2. rtr_test_data 3. rtr_test_exclude 4. rtr_status_change 	<ol style="list-style-type: none"> 1. Data validation each step 2. Smaller data sets & file sizes 	<ol style="list-style-type: none"> 1. Multiple steps to submit all data 2. Data is submitted per test type

- Preference expressed for an additional CSV file that can be used for download and upload.
 - User can edit pre-populated data in downloaded file and upload updated file to eDART.
 - User will need to enter information for units with no responses from previous year.
- Reminder: Requirement to complete GO Contact Information Survey (GCIS) being added to PJM Manual.
- Future meetings will be scheduled to discuss details on the GO survey enhancements.

- Updates from January 30th Meeting
- Updates to Transmission Outage Cause Types
- March 2017 Release Enhancements
- eDART Refresh
- Future Enhancements
- Question and Answer Resolution Session

- Details discussed during March SOS-T meeting
(<http://www.pjm.com/~media/committees-groups/subcommittees/private-sys-op-trans/20170302/20170302-item-08-edart-to-outage-cause-type-proposal.ashx>)
- Timeline
 - March 8th
 - Add new/Rename cause types
 - Week of March 13th
 - Contact TOs with current and future tickets that have cause types flagged for retirement. Update ticket with valid cause type.
 - Retire identified cause types.

- Updates from January 30th Meeting
- Updates to Transmission Outage Cause Types
- March 2017 Release Enhancements
 - eDART Refresh
 - Future Enhancements
- Question and Answer Resolution Session

- Sandbox release: Week of March 13th
 - Coordinated Testing in Sandbox on **Friday, March 17th.**
 - SMEs available to perform PJM functions e.g. update tickets (lock, approve, activate, recall, etc.) as needed.
 - Members confirm all functionalities frequently used.
- Production release: March 29th
 - eDART will be unavailable from 19:00 to 02:00 on Thursday, March 30th.

- New Switch Start Business Rules implemented in December 14th eDART release.
 - Switch Start restricted to 1 hour or less before Est. Start.
- Bug reported with implementation of rule for tickets in certain statuses.
 - Will be fixed in March eDART release.
- After recent review, Unplanned Tickets will also be subject to 1 hour limit for Switch Start Date submission.

- New flag added to MVAR Test tickets to indicate that ticket is for reactive testing with operational data instead of staged data.
 - Ticket dates must be in the past. Operational data at the indicated time will be used for the analysis.
 - Non-Operational data ticket (except Emergency tickets) cannot be in the past.
 - Operational Data flag is set to false (unchecked) by default.
 - Operational Data flag will auto-populate Reactive Result Ticket Type field.

New Generator Ticket

User ID: _____ Company: _____
 Generation Type: Unit Name:
 Company Ticket ID:
 Description:
 Date (MM/DD/YYYY) Hour (HH24:MI)
 Est./Ramp Start:
 Est. End:

MW Volt. Reg. MVAR Governor MVAR Test PSS

Current eDART D-Curve

Operational Data:

EMS Equipment Name	MW Points	MVAR Limit	
		Min	Max

Clear Main Menu

Generator Ticket (Review/Revise)

User ID: _____ Ticket Number: _____ Company: _____
 Generation Type: Hydro Unit Name: _____ Est./Ramp Start: 02/07/2017 11:11
 Ticket Status: Submitted Timestamp: 02/21/2017 16:51 Est. End: 02/14/2017 11:11
 Company Ticket ID:
 Actual Start: _____
 Actual End: _____

Description PJM Comments

Current eDART D-Curve

Operational Data: **Yes**

EMS Equipment Name	MW Points	MVAR Limit	
		Min	Max
	0	-8	8
	5	-8	8
	11	-8	8
	12	-7	7
	13	-5	5
	14	-2	2
	15	0	0
	16	0	0

Cancel Ticket Add New Revision Submit Refresh Comments Log History Log Main Menu

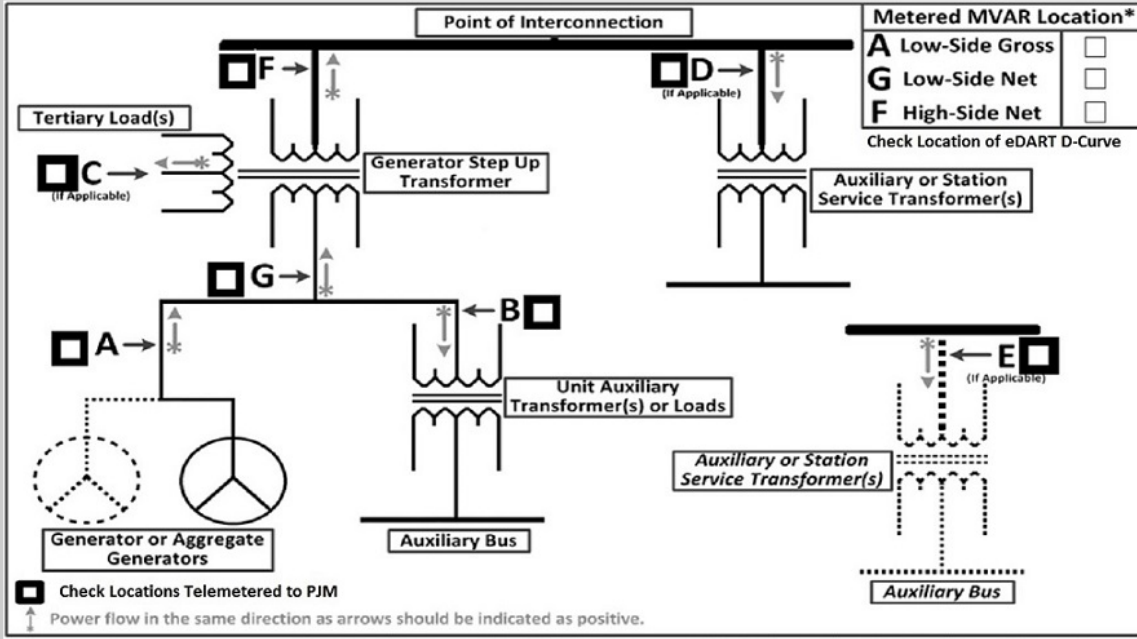
- Operational vs Staged radio button removed.
 - Will auto populate based on MVAR Test Ticket Operational Data flag value.
 - Operational Data checked = Operational
 - Operational Data unchecked = Staged
- Generator Voltage Schedule PT Ratio & System Voltage PT Ratio data field types changed from number to text.

- ‘Generator Voltage Scheduled’ changed to ‘Generator Voltage/MVAR/PF Schedule’ and expanded to 2 fields:
 - 1st field allows numeric data.
 - 2nd field specifies Generator Schedule unit of measure (KV = voltage; MVAR = reactive; PF = power factor)
- POST RELEASE, all existing tickets will default to the following:
 - Generator Voltage/MVAR/PF Schedule = KV.
 - Ticket Type = Staged.
 - PJM will contact GOs with Ticket Type in Reactive Result Ticket = Operational to assist in conversions.

Reactive Capability Testing Form

Reactive Result Ticket ID: eDART MVAR Test Ticket: Test: Date of Test: Unit Name: Ticket Type: Staged Company: Previous Test Date:

Tested By*: Cooling Water Temperature, F: Ambient Temperature, F: Black Start*: Yes No
 Test Analysis Contact*: Start Time of the Test*: (hh24:mi EPT) Ambient Relative Humidity: Test Results Limited by System Conditions and PJM notified:
 Analysis Contact Email*: End time of the test will be calculated by PJM based on the test type. Normal Hydrogen Pressure, PSIG: Automatic Voltage Regulator verified in service:
 Analysis Contact Phone*: Actual Hydrogen Pressure, PSIG:



Location	Current Test			Stated Capability		Additional Comments	
	Telemetered to PJM*	eDART D-Curve*	Voltage (KV)*	Real Power (MW)*	Reactive Power (MVAR)*		Real Power (MW)
A Low-Side Gross	<input type="checkbox"/>	<input checked="" type="radio"/>	<input type="text"/>	<input type="text"/>	<input type="text"/>	<input type="text"/>	<input type="text"/>
B	<input type="checkbox"/>	<input type="radio"/>	<input type="text"/>	<input type="text"/>	<input type="text"/>	<input type="text"/>	<input type="text"/>
C	<input type="checkbox"/>	<input type="radio"/>	<input type="text"/>	<input type="text"/>	<input type="text"/>	<input type="text"/>	<input type="text"/>
D	<input type="checkbox"/>	<input type="radio"/>	<input type="text"/>	<input type="text"/>	<input type="text"/>	<input type="text"/>	<input type="text"/>
E	<input type="checkbox"/>	<input type="radio"/>	<input type="text"/>	<input type="text"/>	<input type="text"/>	<input type="text"/>	<input type="text"/>
F High-Side Net	<input type="checkbox"/>	<input checked="" type="radio"/>	<input type="text"/>	<input type="text"/>	<input type="text"/>	<input type="text"/>	<input type="text"/>
G Low-Side Net	<input type="checkbox"/>	<input checked="" type="radio"/>	<input type="text"/>	<input type="text"/>	<input type="text"/>	<input type="text"/>	<input type="text"/>

Data Telemetry Verified between the plant, the MOC and PJM as per M14D, E 4.1: (MM/DD/YYYY) (hh24:mi)

Generator Voltage/MVAR/PF Schedule: Unit of Measure GSU Nameplate Data:
 Generator Voltage PT Ratio: KV Tap Setting: KV
 System Voltage Schedule: KV Impedance: %
 System Voltage PT Ratio: KV Generator Capability: MVA

- New status for Reactive Results Tickets: ‘MOD-025, no PJM Letter’ valid for GO data submittals for MOD-025-2 requirements only.
 - GO submits ticket with comment stating test is for MOD-025 only.
 - PJM runs analysis and requests action; status set to GO Review.
 - GO declines PJM requested action with comment stating test is for MOD-025 only.
 - PJM sets status to ‘MOD-025, no PJM Letter’
- Status added to ticket count on Main Menu and report filter.

Reactive Result Tickets

[Create Reactive Result Ticket](#)
[View Reactive Result Tickets](#)
[Company Unit Report](#)

Status	Total
Saved	43
PJM Review	
GO Data Required	1
GO Review	
GO No Response	2
New Default D-Curve Under Review	4
Awaiting Test Letter	3
Test Letter Issued	2
MOD-025 only, no PJM Letter	1

Reactive Capability Testing Report

Ticket Status: Saved

PJM Review
 GO Data Required
 GO Review

GO No Response
 New Default D-Curve Under Review
 Awaiting Test Letter
 Test Letter Issued

Canceled by PJM
 Canceled by GO
 Past Test Letter
 MOD-025 only, no PJM Letter

Late: Yes No Both

[Apply Filter](#)
[Default GO View](#)
[Main Menu](#)

- Revisions on MW outage tickets in Submitted or Pending Evaluation status will be canceled when outage ticket is in a final state.
 - Revision status set to Canceled by PJM.
- Final state status include Complete, Denied, Canceled by Company and Canceled by PJM.

- Periodic Fuels and Emissions Survey requirement added to Manual 14-D, Section 7.3.5:

Periodic Fuel and Emissions Survey

Depending on the severity of the weather forecasts, projected fuel availability, responses to the Seasonal Fuel and Emission Survey or other reasons, PJM may request on a periodic basis (such as monthly or as-needed) updated responses to the Seasonal Fuel and Emission Survey questions for a subset of units. This information is intended to assist in the Operations Planning Process. These Periodic Surveys will be issued via eDART.

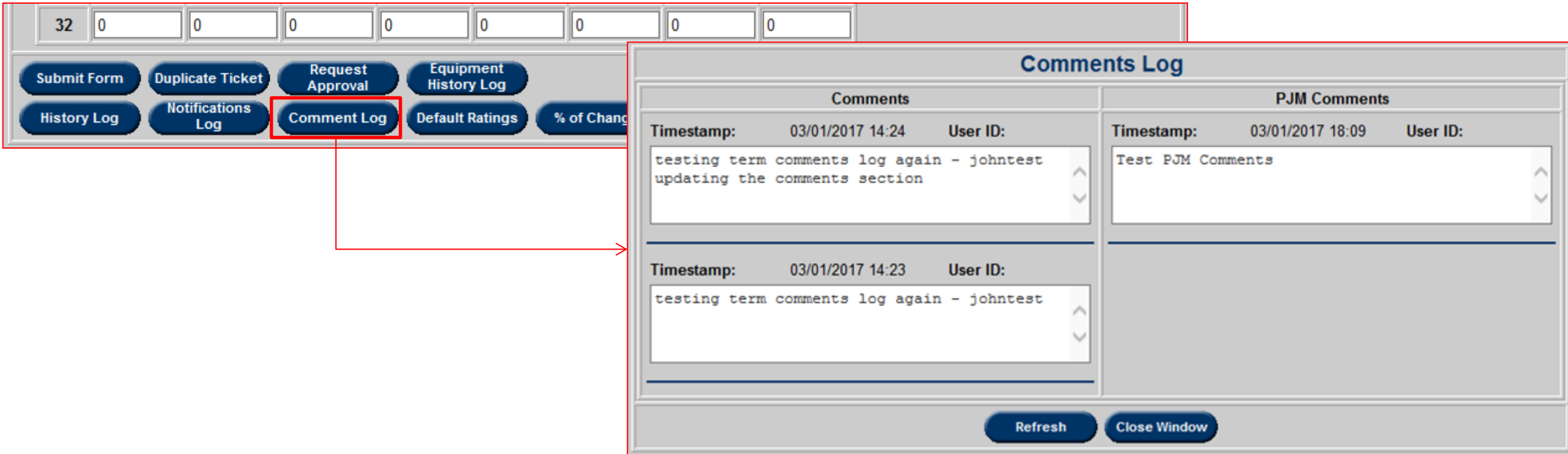
- No change to how survey is administered and answered in eDART.
- GO Survey button will be red for impacted GOs required to respond.

- eDART generated emergency transmission trip tickets assigned Unknown cause type.
- Transmission Owner expected to update the cause type to reflect real-time cause/event.
- New business rules for use of Unknown cause type:
 - Only applicable for EMS Tripped Tickets.
 - Modification of EMS Tripped Tickets will require Cause Type to be changed from Unknown.

- Warning message to be displayed when Transmission outage tickets submitted with Start Date in the past.
 - User can go back and edit ticket or continue with ticket submission.
- Submission of past tickets allowed to support outage reporting with the following restrictions:
 - Non-reclose tickets cannot start more than 1 year in the past.
 - Auto-reclose tickets cannot start more than 2 years in the past.

- Ability to download Transmission Causes granted to users with generic access to eDART.
- Incorrect navigation from Transmission - Current One Line Diagrams page fixed.
 - Previously, clicking Back would re-direct user to Network Model menu.
- Fix implemented to allow read only users access to view History Log for System Restoration Plans.

- Comment log added to TERM tickets to track changes to TO and PJM Comments fields.



The screenshot displays the PJM system interface. At the top, there is a navigation bar with several buttons: 'Submit Form', 'Duplicate Ticket', 'Request Approval', 'Equipment History Log', 'History Log', 'Notifications Log', 'Comment Log', 'Default Ratings', and '% of Change'. The 'Comment Log' button is highlighted with a red box. A red arrow points from this button to a 'Comments Log' window. The window is divided into two columns: 'Comments' and 'PJM Comments'. The 'Comments' column shows two entries with timestamps and user IDs. The 'PJM Comments' column shows one entry. At the bottom of the window are 'Refresh' and 'Close Window' buttons.

Comments		PJM Comments	
Timestamp:	03/01/2017 14:24	User ID:	03/01/2017 18:09
testing term comments log again - johntest updating the comments section		Test PJM Comments	
Timestamp:	03/01/2017 14:23	User ID:	
testing term comments log again - johntest			

- Existing Tie Station field added to Network Model Change Request.
 - Yes/No field.
 - Indicates if any station on the request has a tie line.

Network Model Change Request

Request ID: **4106** Company: _____

This Change Request has been locked by PJM. Please contact your PJM Model Coordinator.

Modeling Coordinator: _____ Model Manager: _____

Title:

Company Project ID: Type: ▾

RTEP/Gen Queue: Status:

Generator: Tie Line:

Existing Tie Station: No

Already in Service: In-Service Date:

Description PJM Comments Stations

- Apply Sort button removed on IRC Company Data report.
 - Not needed as there are no fields to sort.
- ‘Go Comments’ changed to ‘GO Comments’ on Reactive Results Tickets.

- Updates from January 30th Meeting
- Updates to Transmission Outage Cause Types
- March 2017 Release Enhancements
- eDART Refresh
- Future Enhancements
- Question and Answer Resolution Session

- Current timeline for Web UI refresh
 - Q2 2017
 - User Experience Analysis and Design
 - Requirements gathering
 - User accounts mapping to Account Manager
 - Q3 2017
 - Work planning (overall project schedule & web UI page sequencing)
 - Q4 – Ongoing
 - Web UI refresh
 - Progress review

- Updates from January 30th Meeting
- Updates to Transmission Outage Cause Types
- March 2017 Release Enhancements
- eDART Refresh
- Future Enhancements
- Question and Answer Resolution Session

- Reactive Reserve Check (RRC) Rewrite – Phase 2
 - Q2 Release (May/June)
 - Functionality to submit/acknowledge reserve values when RRC is issued.
 - New/Old RRC reports.
 - Parallel Production till September
- GO Survey Enhancements
 - Future meetings will be scheduled to discuss details on the GO survey enhancements.

- Voltage Limits functionality for TOs to submit voltage limits per Station/Voltage level.
 - New ticket type.
 - Associated reports including defaults and effective limits
- Transformer Tap Changer functionality for TOs to submit adjustments to transformer tap information.
 - New ticket type.
 - Associated reporting.

- Updates from January 30th Meeting
- Updates to Transmission Outage Cause Types
- March 2017 Release Enhancements
- eDART Refresh
- Future Enhancements
- Question and Answer Resolution Session

- edarthelp@pjm.com
- Chidi Ike-Egbuonu: chidi.ike@pjm.com