



Order 1920 – Part IV. Coordination of Regional Transmission Planning and Generator Interconnection Processes

Ed Franks

Interconnection Analysis Department

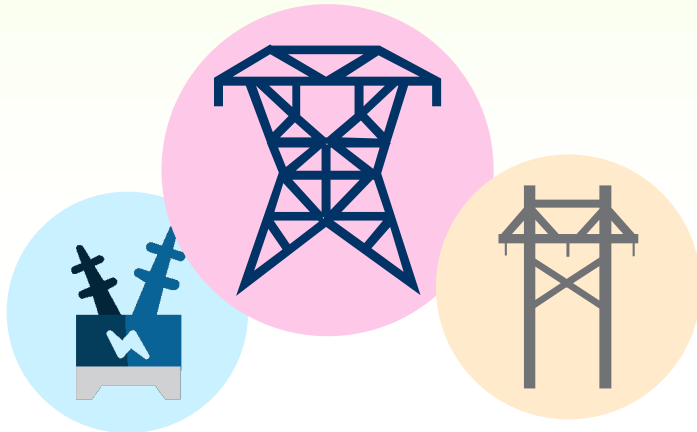
Special TEAC – Order 1920

August 27, 2024

Overview:

- Order requires the transmission provider to evaluate for selection regional transmission facilities that address certain identified interconnection-related transmission needs associated with certain interconnection-related network upgrades originally identified through the generator interconnection process in their existing Order No 1000 regional transmission planning process
 - This is a requirement for the Order No 1000 regional transmission planning process... and is not a requirement for Long-Term Regional Transmission Planning
 - Why implement in Order 1000 regional transmission planning process and not in Long-Term Regional Transmission Planning? Will better alleviate transmission limitations that are more efficient or cost effective regional transmission solutions when analyzed in the near term. (§1126)

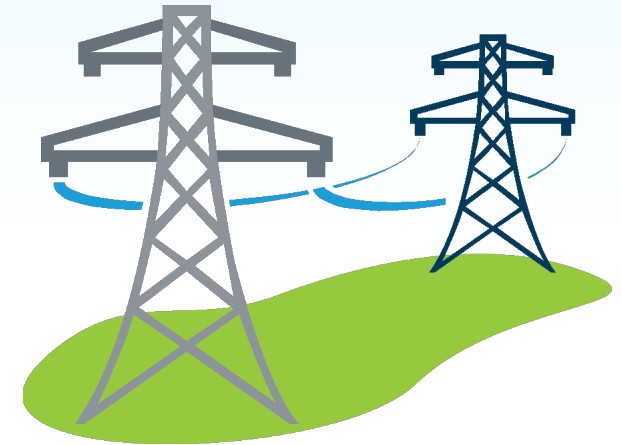
Certain
Interconnection-
Related Network
Upgrades



Evaluate for
Potential Selection



Order 1000
Regional Transmission
Planning Process



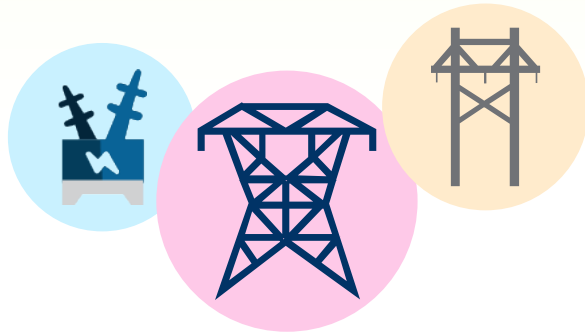


Which interconnection-related network upgrades need to be evaluated for potential selection in the Order No 1000 regional transmission planning process?

- Order establishes criteria for which interconnection-related network upgrades identified in the interconnection studies should be evaluated for potential selection.
- Selection Criteria (must meet all 4 criteria):
 1. interconnection-related transmission needs and network upgrades repeatedly identified – in at least 2 interconnection queue cycles during the preceding 5 years
 2. interconnection-related network upgrade identified must have a voltage of at least 200 kV AND an estimated cost of at least \$30M
 3. interconnection-related network upgrade identified has not been developed/constructed
 4. interconnection-related network upgrade identified not currently part of a ISA/GIA.
- The criteria establishes a narrower scope of interconnection-related transmission needs being repeatedly identified yet continuing to go unresolved through the generator interconnection process and the needs likely to persist. (§1150)
 - Repeated identification of expensive network upgrades in the interconnection studies create a barrier to accessing the transmission system which can hinder timely development of new generation. (§1103)

Interconnection-Related Network Upgrades

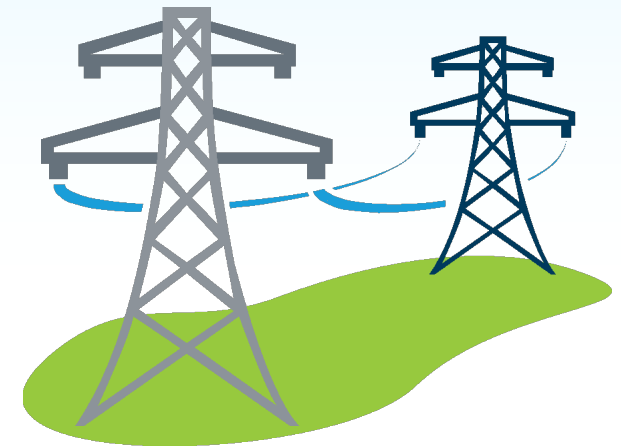
- *Repeatedly identified*
- *Voltage ≥ 200 kV AND Cost \geq \$30M*
- *Not constructed*
- *Not part of ISA/GIA*



Evaluate for
Potential Selection



Order 1000
Regional Transmission
Planning Process



Additional Key Clarifying Details:

- Order allows for flexibility in how transmission providers evaluate such facilities for potential selection and for transmission provider to propose the best method to incorporate this requirement within their existing regional transmission planning processes. (¶1111)
- Satisfying the selection criteria does not require transmission provider to select any particular interconnection-related network upgrade facility for inclusion in the Order No 1000 regional transmission planning process. The Order only requires consideration of these interconnection-related transmission needs and network upgrades in the Order No 1000 regional transmission planning process. (¶1149)
- This final rule does not alter the existing cost allocation methods in either the interconnection process or in existing Order 1000 regional transmission planning processes. (¶1117)

Presenter:
Ed Franks, Edmund.Franks@pjm.com

Order 1920 – Part IV. Coordination of Regional Transmission Planning and Generator Interconnection Processes



Member Hotline

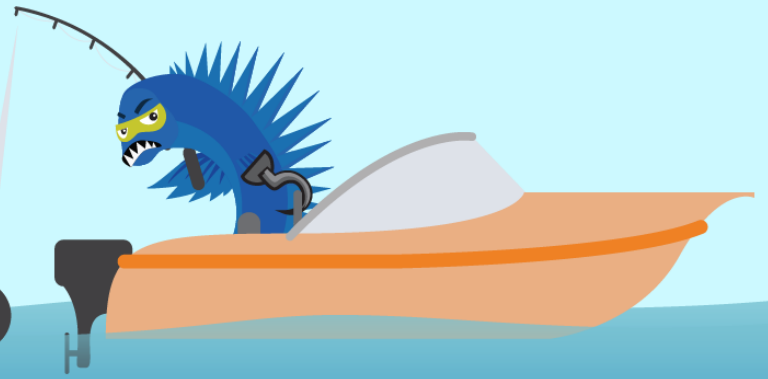
(610) 666 – 8980

(866) 400 – 8980

custsvc@pjm.com

**PROTECT THE
POWER GRID**

**THINK BEFORE
YOU CLICK!**



**BE ALERT TO
MALICIOUS PHISHING
EMAILS**



**Report suspicious email activity to PJM.
Call (610) 666-2244 or email it_ops_ctr_shift@pjm.com**