

# Submission of PPL Supplemental Projects for Inclusion in the Local Plan

# PPL Transmission Zone: Supplemental

**Need Number: PPL-2020-0016**

**Process Stage:** Submission of Supplemental Project for inclusion in the Local Plan 4/16/2021

**Need Slide Presented:** 11/18/2020

**Solution Slide Presented:** 12/16/2020

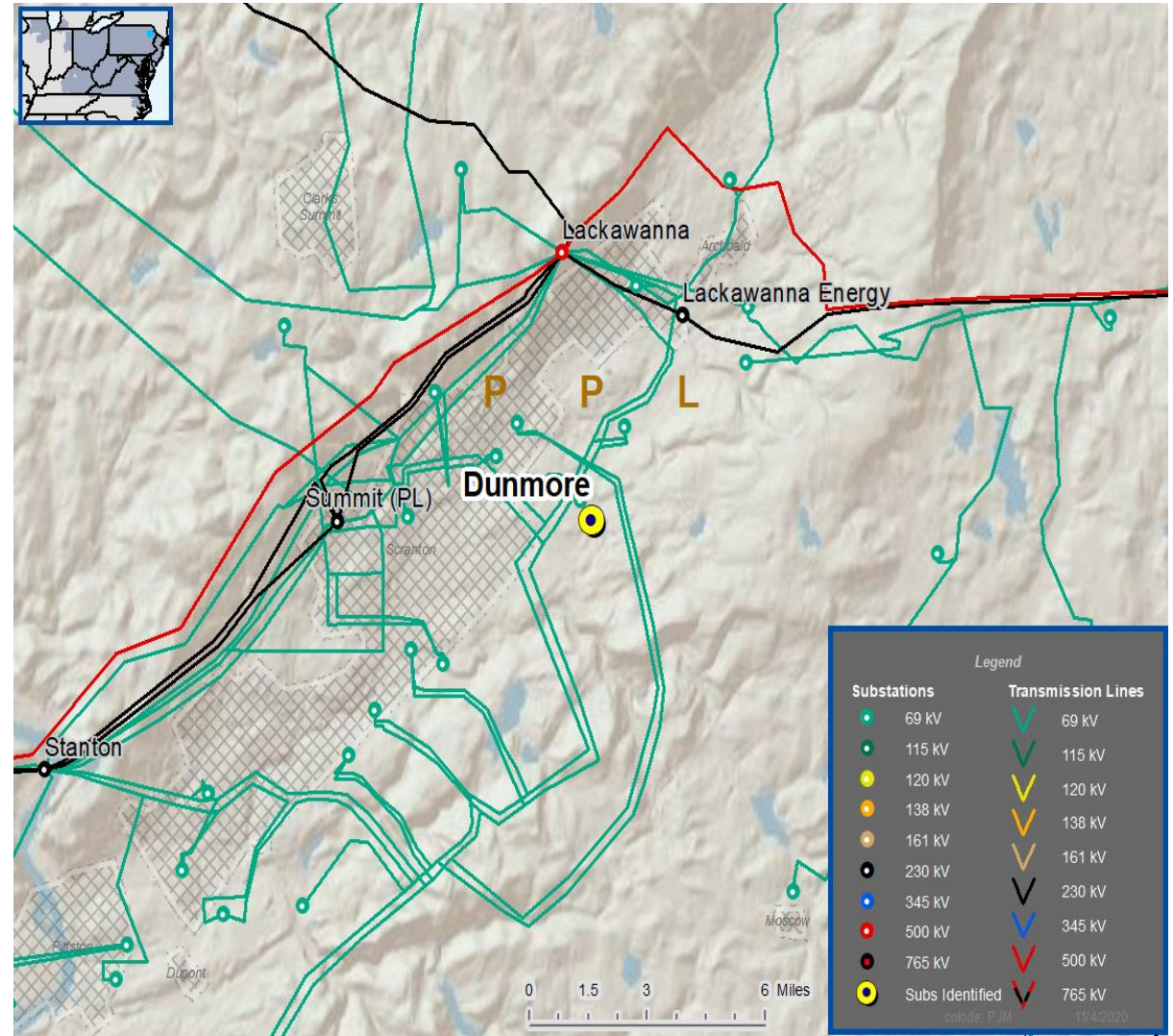
**Supplemental Project Driver:** Customer Service

## Problem Statement:

- A new customer has submitted a request to have their facility served from a 69kV transmission line in Dunmore, PA. The load is approximately 15 MVA.

## Specific Assumption References:

[PPL 2020 Annual Assumptions](#)



**Need Number: PPL-2020-0016**

**Process Stage:** Submission of Supplemental Project for inclusion in the Local Plan 4/16/2021

**Selected Solution:** Extend a new double circuit 69kV tap from the existing Lackawanna – Scranton #1 69kV line to interconnect a new customer 69-12.47kV substation. Build 0.1 miles of new 69kV double circuit line using 556 ACSR conductor.

**Alternatives Considered:**

- 1. No feasible alternatives

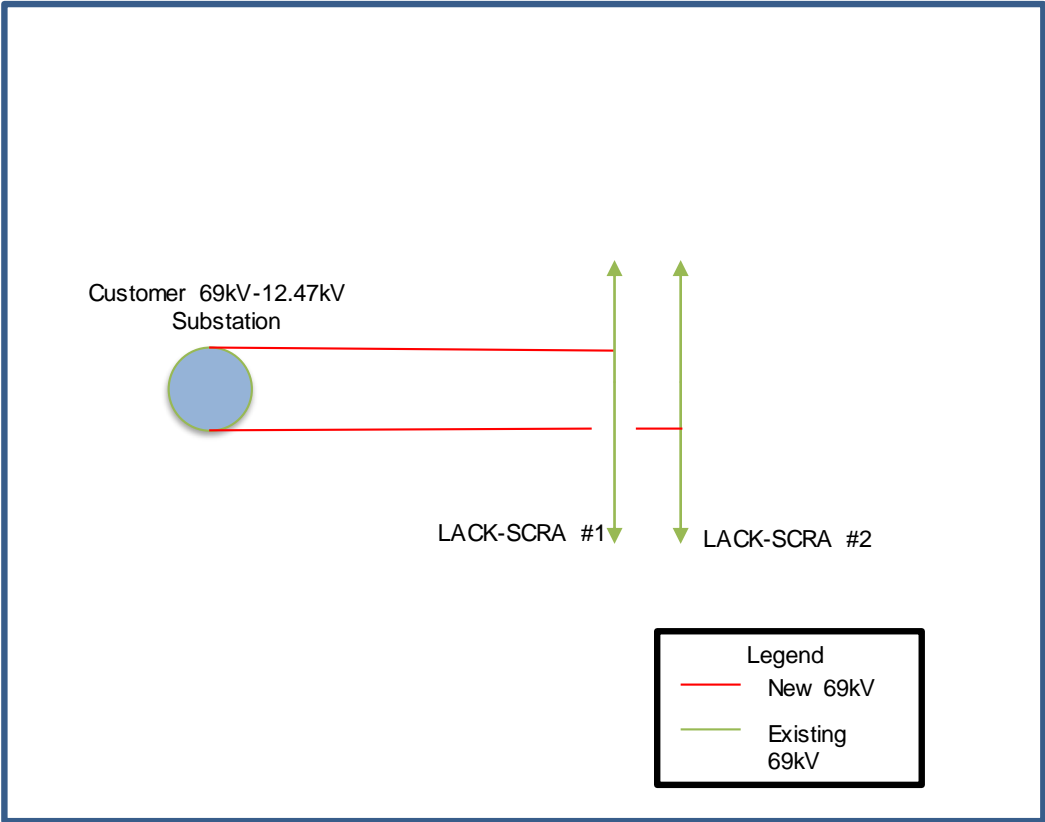
**Estimated Project Cost:** \$1.0M

**Projected In-Service:** 5/31/2021

**Supplemental Project ID:** s2419

**Project Status:** Conceptual

**Model:** 2021



# PPL Transmission Zone: Supplemental

**Need Number: PPL-2020-0017**

**Process Stage:** Submission of Supplemental Project for inclusion in the Local Plan 4/16/2021

**Need Slide Presented:** 11/18/2020

**Solution Slide Presented:** 12/16/2020

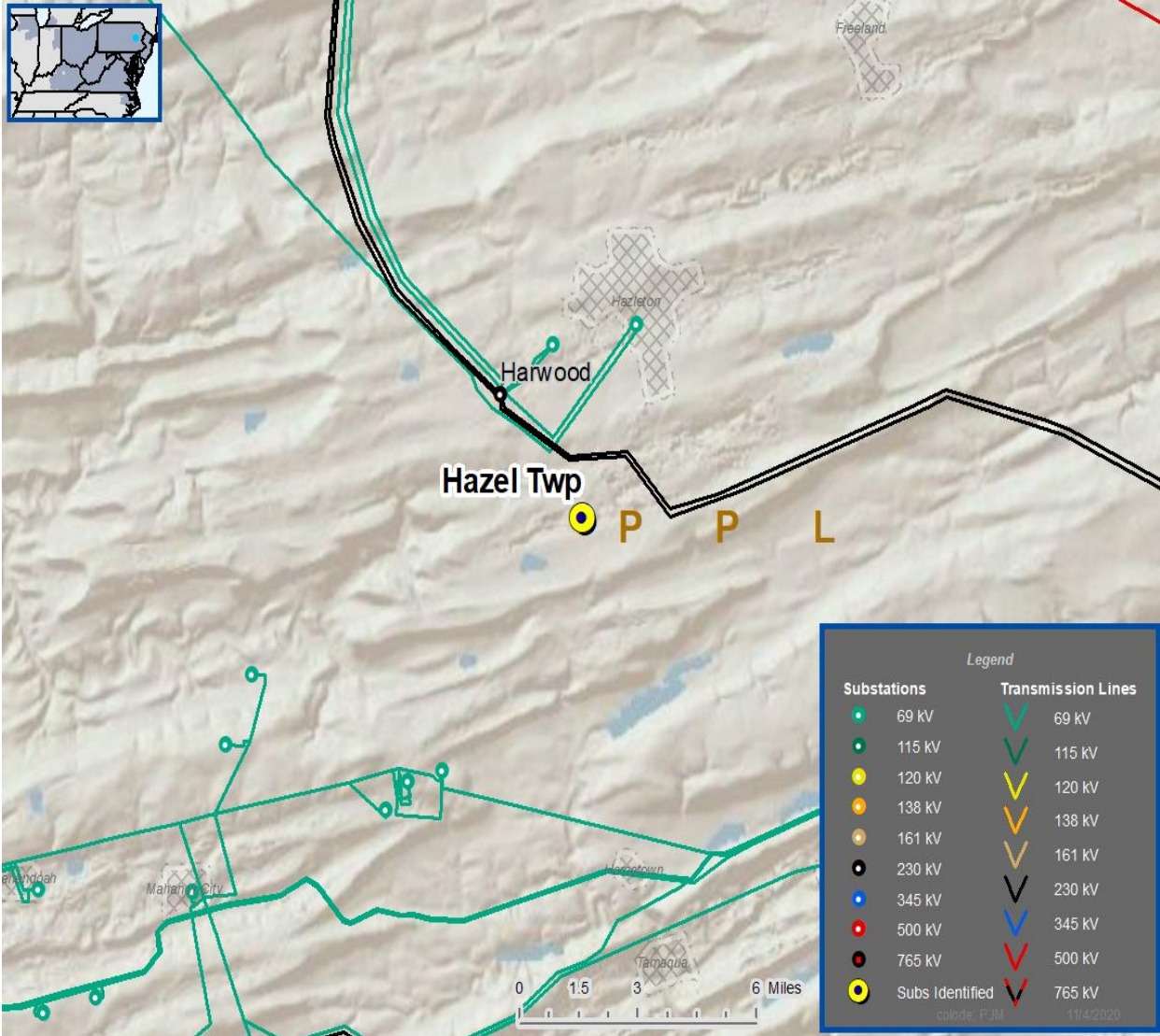
**Supplemental Project Driver:** Customer Service

**Problem Statement:**

- A new customer has submitted a request to have their facility served from a 69kV transmission line in Hazle Township, PA. The load is approximately 12 MVA.

**Specific Assumption References:**

[PPL 2020 Annual Assumptions](#)





**Need Number: PPL-2020-0017**

**Process Stage:** Submission of Supplemental Project for inclusion in the Local Plan 4/16/2021

**Selected Solution:** Extend a new single 69kV tap from the existing Hershey Chocolate Tap (fed from the Harwood – Humboldt #2) 69kV line to interconnect a new customer 69-12.47kV substation. Build 0.75 miles of new 69kV single circuit line using 556 ACSR conductor.

**Alternatives Considered:**

- 1. No feasible alternatives

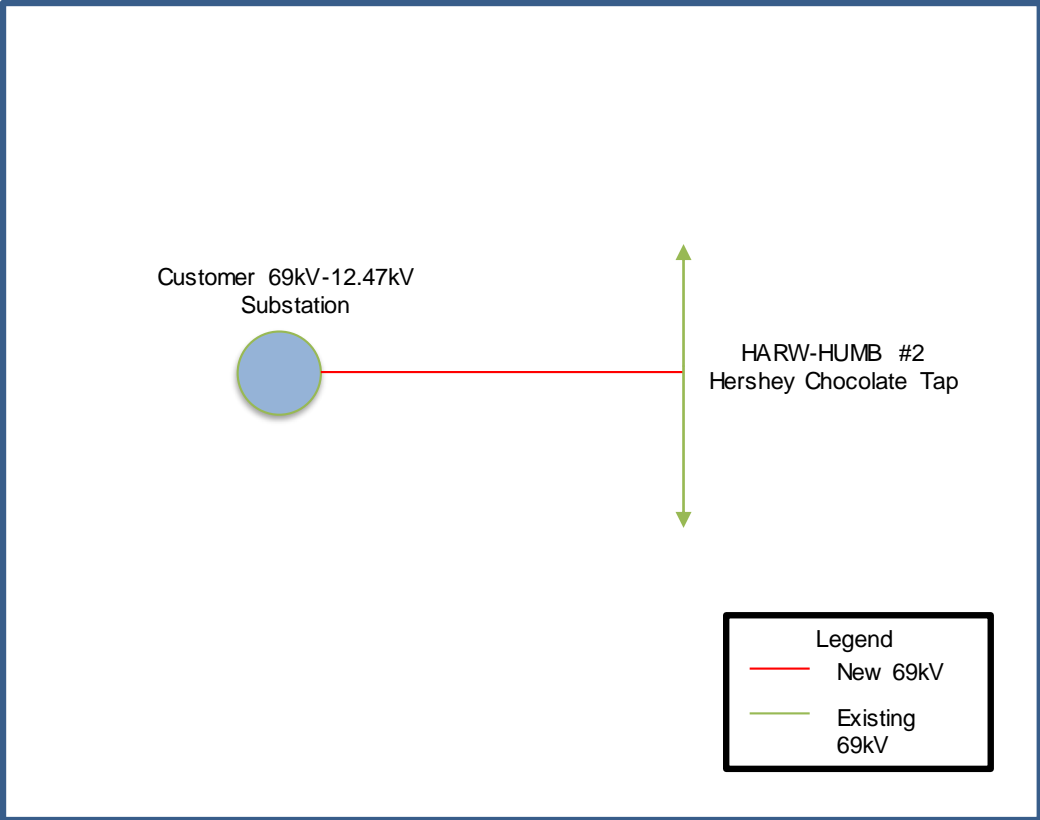
**Estimated Project Cost:** \$1.9M

**Projected In-Service:** 9/01/2021

**Supplemental Project ID:** s2420

**Project Status:** Conceptual

**Model:** 2021



**Need Number: PPL-2020-0018**

**Process Stage:** Submission of Supplemental Project for inclusion in the Local Plan 4/16/2021

**Need Slide Presented:** 11/18/2020

**Solution Slide Presented:** 12/16/2020

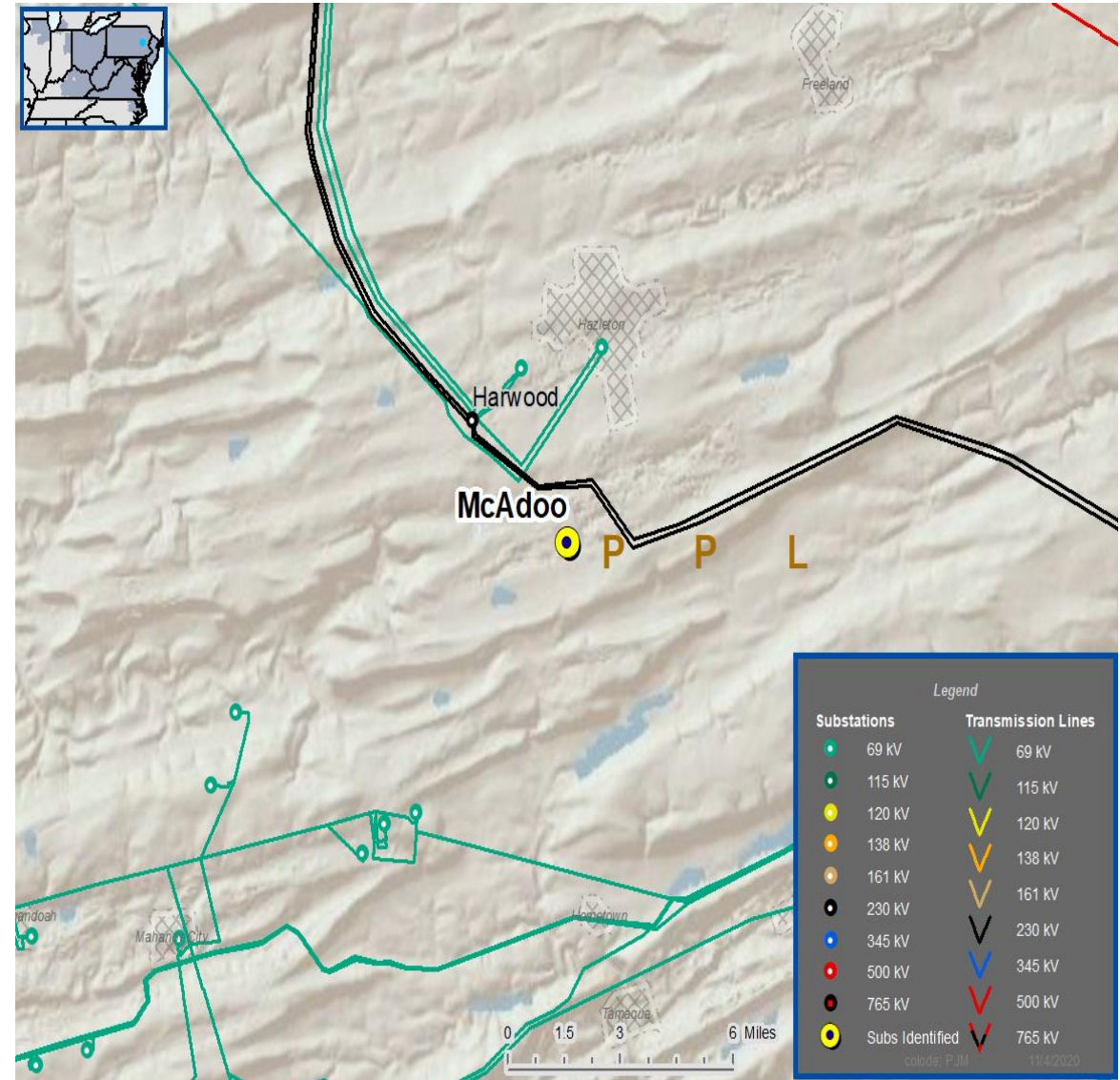
**Supplemental Project Driver:** Customer Service

## Problem Statement:

- A new customer has submitted a request to have their facility served from a 69kV transmission line in McAdoo, PA. The load is approximately 14 MVA.

## Specific Assumption References:

[PPL 2020 Annual Assumptions](#)



**Need Number: PPL-2020-0018**

**Process Stage:** Submission of Supplemental Project for inclusion in the Local Plan 4/16/2021

**Selected Solution:** Extend a new single 69kV tap from the Harwood – East Hazleton #1 69kV line to interconnect a new customer 69-12.47kV substation. Build 0.1 miles of new 69kV single circuit line using 556 ACSR conductor.

**Alternatives Considered:**

- 1. No feasible alternatives

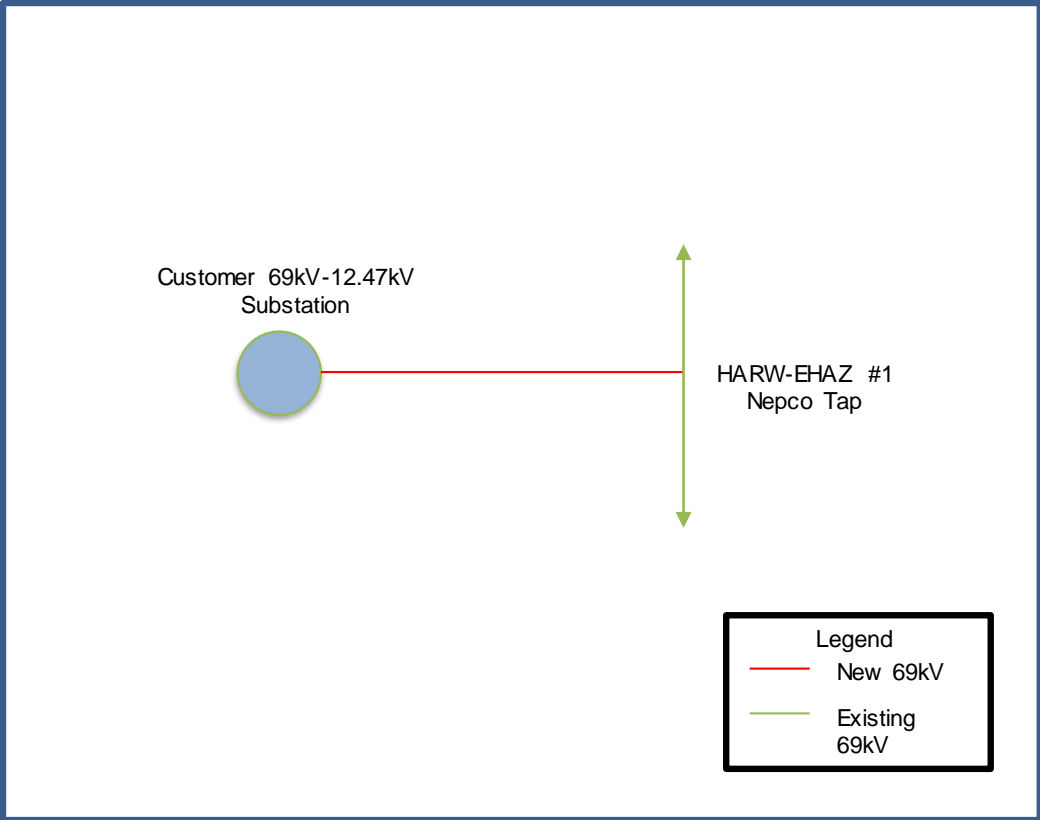
**Estimated Project Cost:** \$0.7M

**Projected In-Service:** 5/1/2021

**Supplemental Project ID:** s2421

**Project Status:** Conceptual

**Model:** 2021



# Revision History

4/16/2021 – V1 – Local Plan for S2419, S2420 and S2421 posted to pjm.com