

Subregional RTEP Committee – Mid-Atlantic FirstEnergy (Met-Ed) Supplemental Projects

August 13, 2020

Need

Stakeholders must submit any comments within 10 days of this meeting in order to provide time necessary to consider these comments prior to the next phase of the M-3 process

Need Number: ME-2020-010

Process Stage: Need Meeting 8/13/2020

Project Driver:

Customer Service

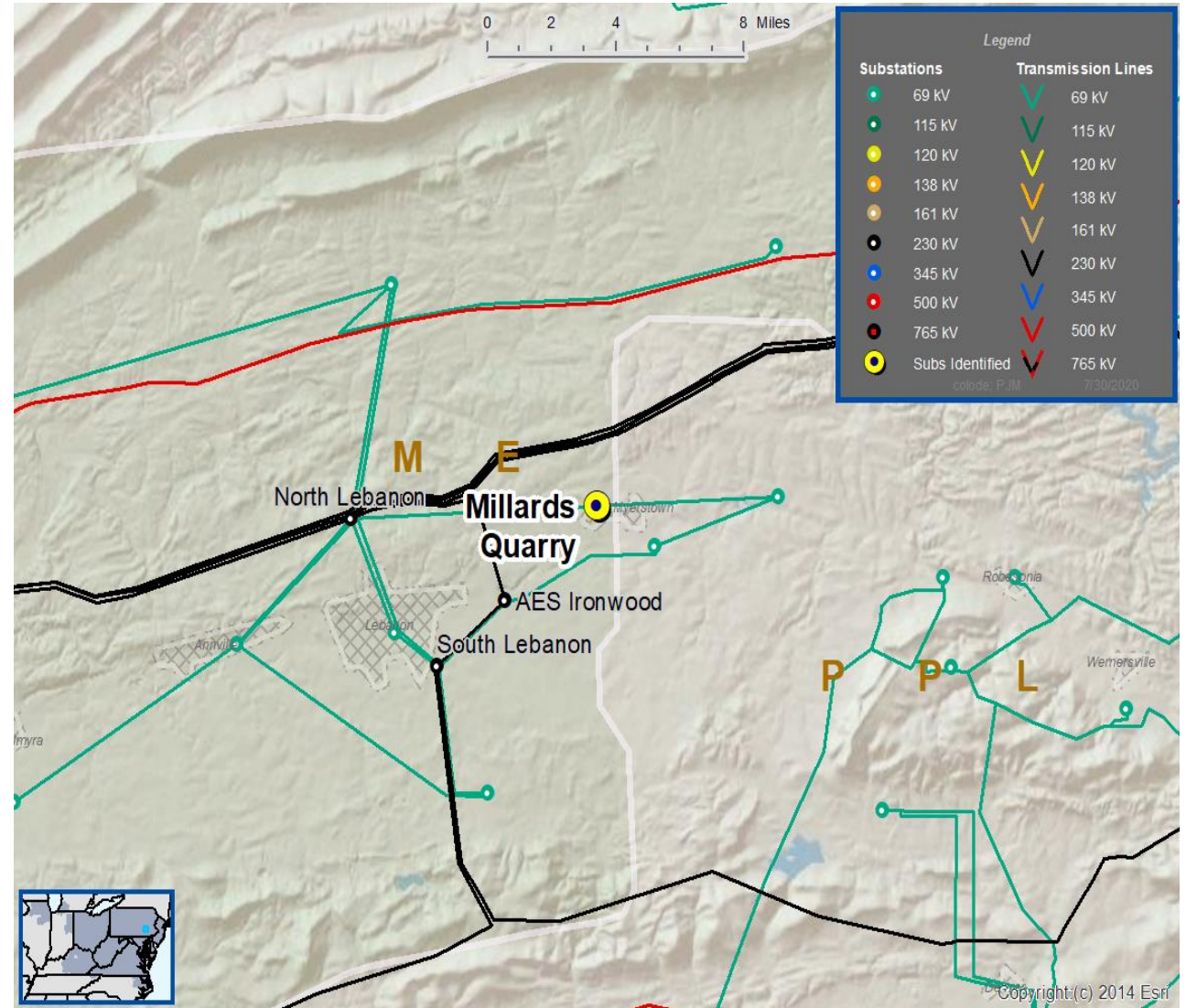
Specific Assumption Reference:

Customer request will be evaluated per FirstEnergy’s “Requirements for Transmission Connected Facilities” document and “Transmission Planning Criteria” document.

Problem Statement:

New Customer Connection – A customer requested 69 kV service; anticipated load is 9.5 MVA; location is near the Millards Quarry 69 kV substation

Requested in-service date is 1/31/2021



Need Number: ME-2020-011

Process Stage: Need Meeting 8/13/2020

Project Driver:

Customer Service

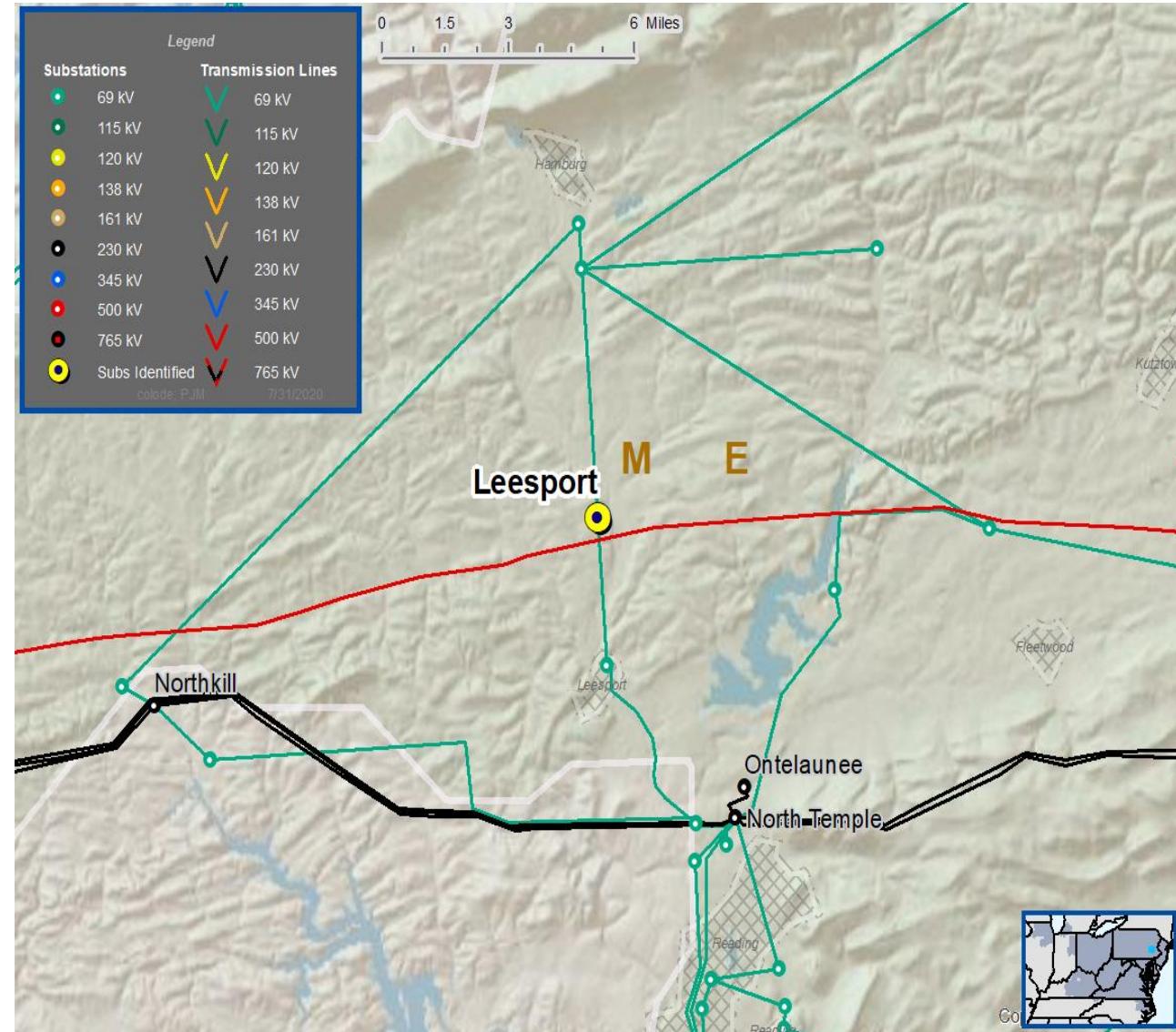
Specific Assumption Reference:

Customer request will be evaluated per FirstEnergy’s “Requirements for Transmission Connected Facilities” document and “Transmission Planning Criteria” document.

Problem Statement:

New Customer Connection – A customer requested 69 kV service; anticipated load is 10 MVA; location is near the Leesport 69 kV substation

Requested in-service date is 3/1/2021



Questions?



Appendix

High level M-3 Meeting Schedule

Assumptions	Activity	Timing
	Posting of TO Assumptions Meeting information	20 days before Assumptions Meeting
	Stakeholder comments	10 days after Assumptions Meeting
Needs	Activity	Timing
	TOs and Stakeholders Post Needs Meeting slides	10 days before Needs Meeting
	Stakeholder comments	10 days after Needs Meeting
Solutions	Activity	Timing
	TOs and Stakeholders Post Solutions Meeting slides	10 days before Solutions Meeting
	Stakeholder comments	10 days after Solutions Meeting
Submission of Supplemental Projects & Local Plan	Activity	Timing
	Do No Harm (DNH) analysis for selected solution	Prior to posting selected solution
	Post selected solution(s)	Following completion of DNH analysis
	Stakeholder comments	10 days prior to Local Plan Submission for integration into RTEP
	Local Plan submitted to PJM for integration into RTEP	Following review and consideration of comments received after posting of selected solutions

Revision History

8/3/2020 – V1 – Original version posted to pjm.com