

Subregional RTEP Committee - Mid-Atlantic FirstEnergy Supplemental Projects

October 21, 2019

Needs

Stakeholders must submit any comments within 10 days of this meeting in order to provide time necessary to consider these comments prior to the next phase of the M-3 process

Need Number: PN-2019-036

Process State: Need Meeting 10/21/2019

Project Driver:

Equipment Material Condition, Performance and Risk

Specific Assumption Reference:

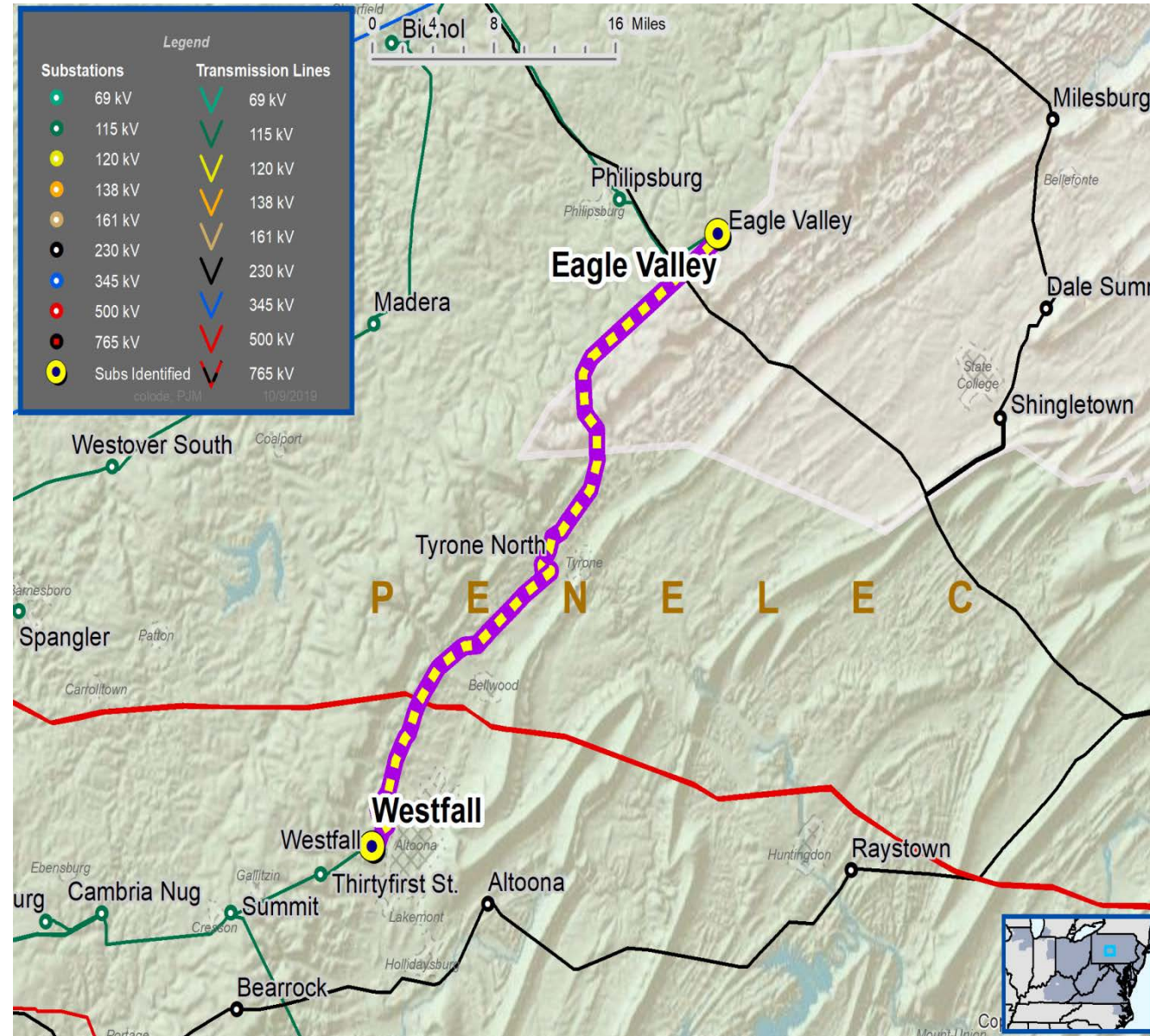
Line Condition Rebuild/Replacement

- Age/condition of wood pole transmission line structures

Problem Statement:

The Eagle Valley – Westfall 115 kV line is exhibiting deterioration resulting in increased maintenance. The structures are approaching end of life. The line was originally constructed in 1956.

- Total line distance is approximately 20.7 miles
- 147 out of 154 structures failed inspection (95% failure rate)
- Failure reasons include age, woodpecker damage, cracking, and decay.



Need Number: PN-2019-037

Process State: Need Meeting 10/21/2019

Project Driver:

Equipment Material Condition, Performance and Risk

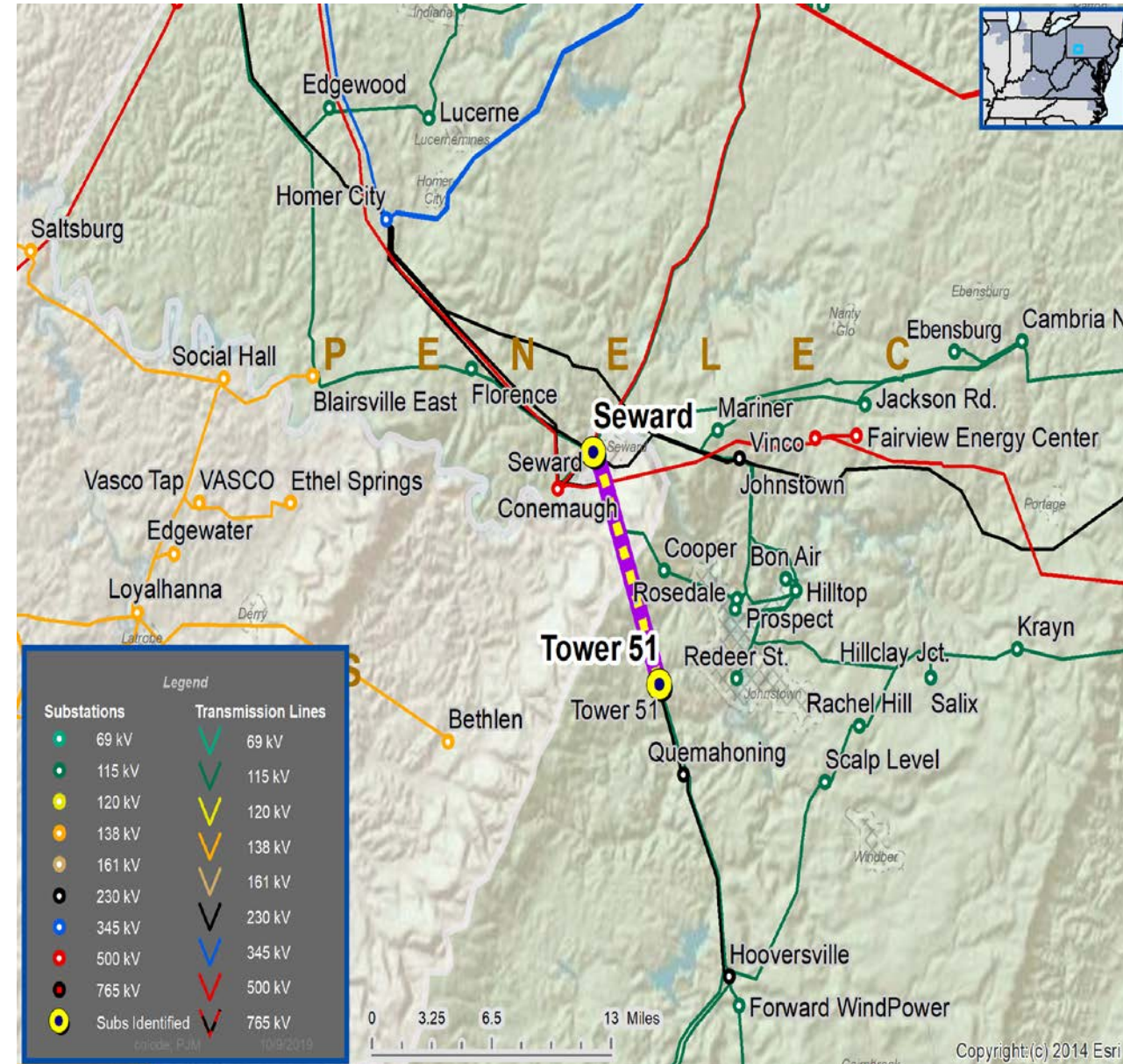
Operational Flexibility and Efficiency

Specific Assumption Reference:

System Performance Projects Global Factors

- System reliability and performance
 - Substation/line equipment limits
- Upgrade Relay Schemes
- Relay schemes that have a history of misoperation
 - Obsolete and difficult to repair communication equipment (DTT, Blocking, etc.)
 - Communication technology upgrades
 - Bus protection schemes

Continued on next slide...



Problem Statement:

- FirstEnergy has identified protection schemes using a certain vintage of relays and communication equipment that have a history of misoperation.
- Proper operation of the protection scheme requires all the separate components perform adequately during a fault.
- In many cases the protection equipment cannot be repaired due to a lack of replacement part and available expertise in the outdated technology.
- Transmission line ratings are limited by terminal equipment.

PN-2019-	Transmission Line / Substation Locations	Existing Line Rating (SN / SE)	Existing Conductor Rating (SN / SE)	Limiting Terminal Equipment
037	Seward – Tower 51 115 kV Line	147/185	201/244	Circuit Breaker, Line Relaying, Line Trap, Substation Conductor

Questions?



Appendix

High level M-3 Meeting Schedule

Assumptions	Activity	Timing
	Posting of TO Assumptions Meeting information	20 days before Assumptions Meeting
	Stakeholder comments	10 days after Assumptions Meeting
Needs	Activity	Timing
	TOs and Stakeholders Post Needs Meeting slides	10 days before Needs Meeting
	Stakeholder comments	10 days after Needs Meeting
Solutions	Activity	Timing
	TOs and Stakeholders Post Solutions Meeting slides	10 days before Solutions Meeting
	Stakeholder comments	10 days after Solutions Meeting
Submission of Supplemental Projects & Local Plan	Activity	Timing
	Do No Harm (DNH) analysis for selected solution	Prior to posting selected solution
	Post selected solution(s)	Following completion of DNH analysis
	Stakeholder comments	10 days prior to Local Plan Submission for integration into RTEP
	Local Plan submitted to PJM for integration into RTEP	Following review and consideration of comments received after posting of selected solutions

Revision History

10/11/2019 – V1 – Original version posted to pjm.com