



Sub Regional RTEP Committee PJM Mid-Atlantic BGE

March 25, 2019

Needs

Stakeholders must submit any comments within 10 days of this meeting in order to provide time necessary to consider these comments prior to the next phase of the M-3 process

Need Number: BE-2019-0002

Meeting Date: 03/25/2019

Process Stage: NEED

Supplemental Project Driver: Equipment Material Condition, Performance and Risk

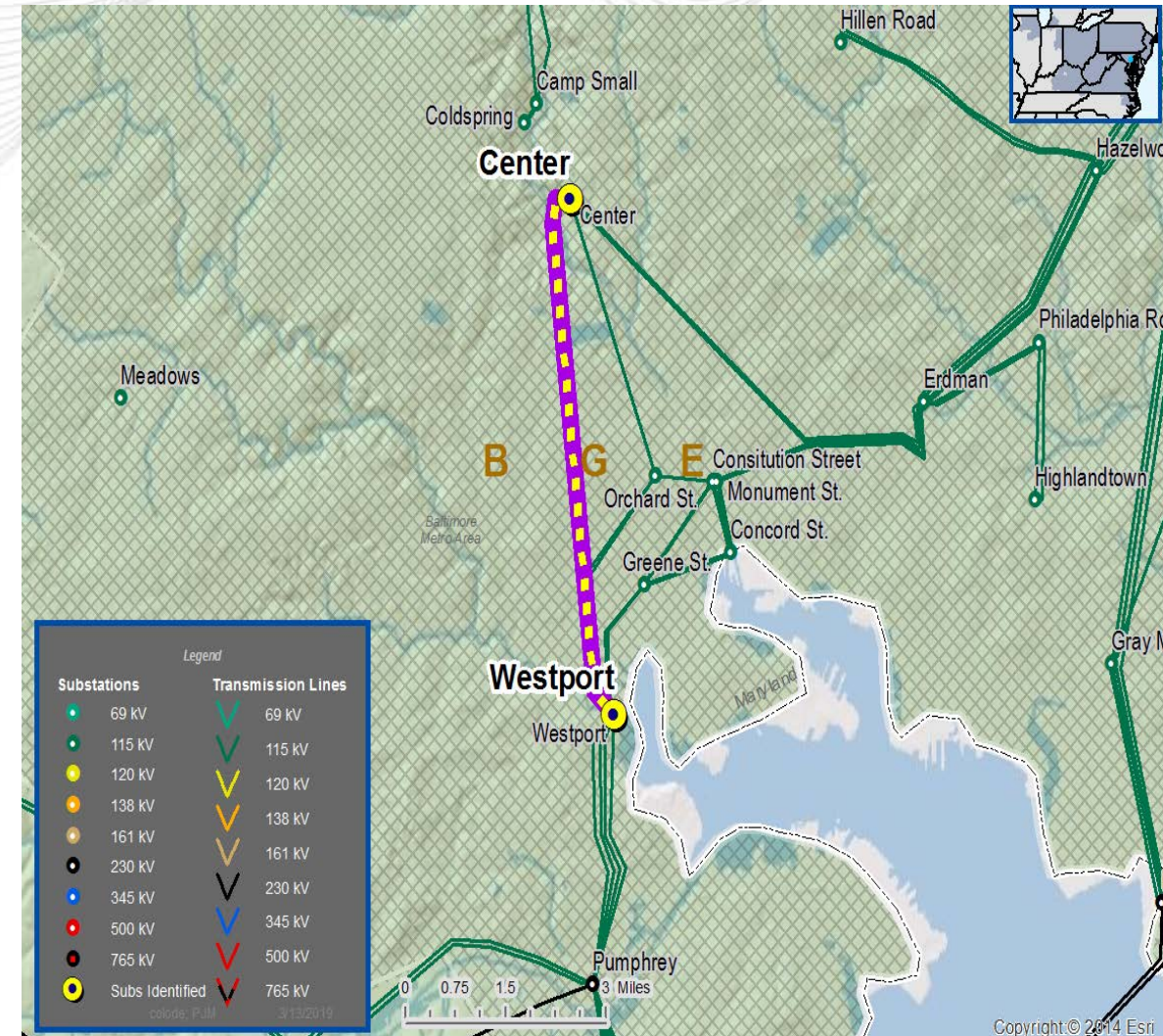
Problem Statement:

Westport to Center 115 kV underground transmission line requires relocation to support external customer work. The cables have also been identified for replacement for various issues including movement of splices, corrosion of parts, gassing, availability of spare materials and specialized resources.

Specific Assumption References:

2019 Local Planning Assumptions (BGE) – 12/07/2018 Mid Atlantic SRRTEP

- Facility Relocation
- Transmission infrastructure replacements (EOL/condition/obsolescence) that are consistent with efficient asset management decisions



Solutions

Stakeholders must submit any comments within 10 days of this meeting in order to provide time necessary to consider these comments prior to the next phase of the M-3 process

Need Number: BE-2019-0001

Need Presented: 01/25/2019

Meeting Date: 03/25/2019

Process Stage: Solution

Supplemental Project Driver: Customer Service

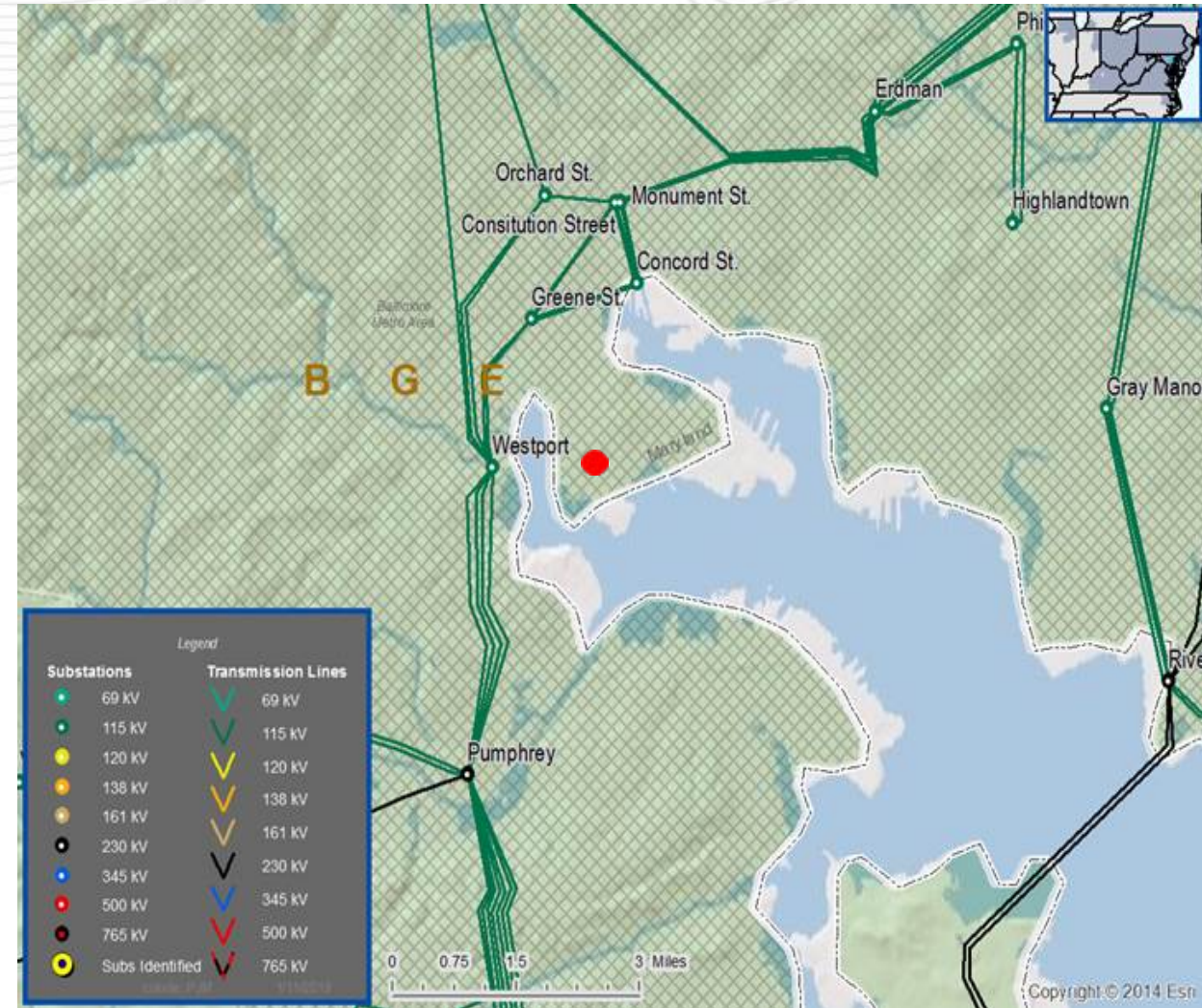
Problem Statement:

New distribution customer load on the Port Covington peninsula

Specific Assumption References:

2019 Local Planning Assumptions (BGE) –
12/07/2018 Mid Atlantic SRRTEP

- Customer Service



Need Number: BE-2019-0001

Proposed Solution:

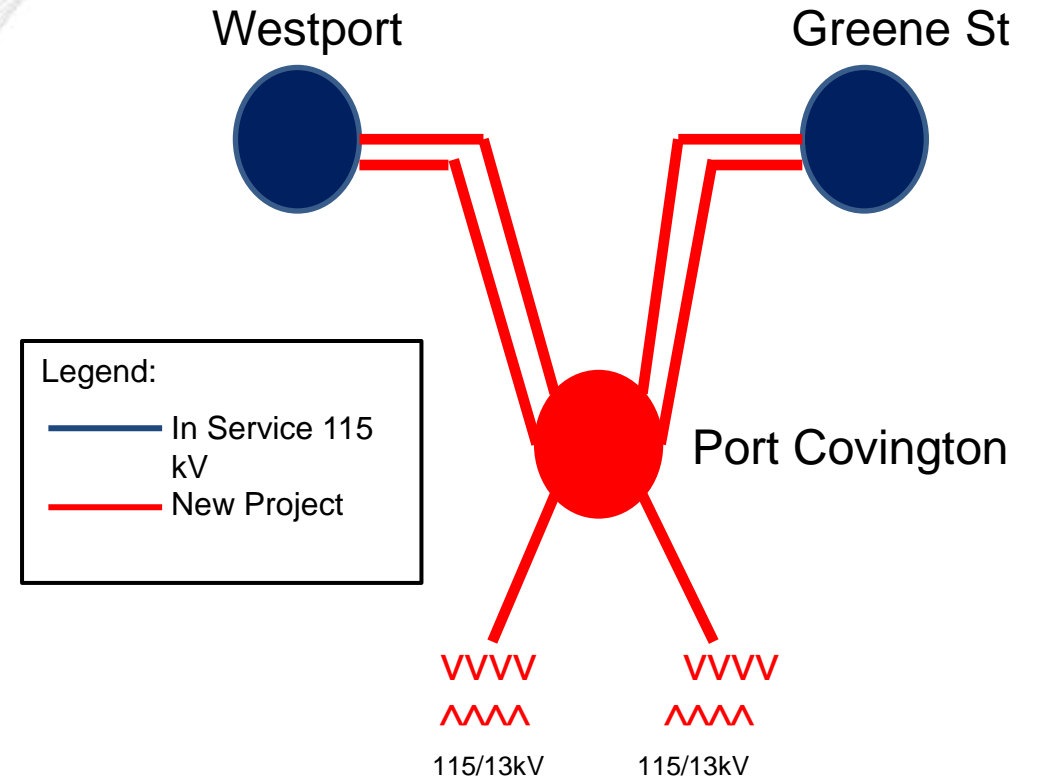
- Expand existing Westport 115 kV station to accommodate new 115 kV UG circuits.
- Provide two 115 kV UG transmission supplies from Westport and two 115 kV UG transmission supplies from Greene St to the new 115/13 kV station

Estimated Cost: \$105M

Projected In-Service Date: 12/01/2026

TO Alternatives Considered:

- No other viable solutions were found.



Questions?



Appendix



Assumptions

Activity	Timing
Posting of TO Assumptions Meeting information	20 days before Assumptions Meeting
Stakeholder comments	10 days after Assumptions Meeting

Needs

Activity	Timing
TOs and Stakeholders Post Needs Meeting slides	10 days before Needs Meeting
Stakeholder comments	10 days after Needs Meeting

Solutions

Activity	Timing
TOs and Stakeholders Post Solutions Meeting slides	10 days before Solutions Meeting
Stakeholder comments	10 days after Solutions Meeting

Submission of Supplemental Projects & Local Plan

Activity	Timing
Do No Harm (DNH) analysis for selected solution	Prior to posting selected solution
Post selected solution(s)	Following completion of DNH analysis
Stakeholder comments	10 days prior to Local Plan Submission for integration into RTEP
Local Plan submitted to PJM for integration into RTEP	Following review and consideration of comments received after posting of selected solutions



Revision History

3/15/2019 – V1 – Original version posted to pjm.com