



Sub Regional RTEP Committee PJM Mid-Atlantic PECO

January 25, 2019

Needs

Supplemental Reliability Upgrades

Need Number: PE-2019-0001

Meeting Date: 01/25/2019

Process Stage: NEED

Supplemental Project Driver: Customer Service

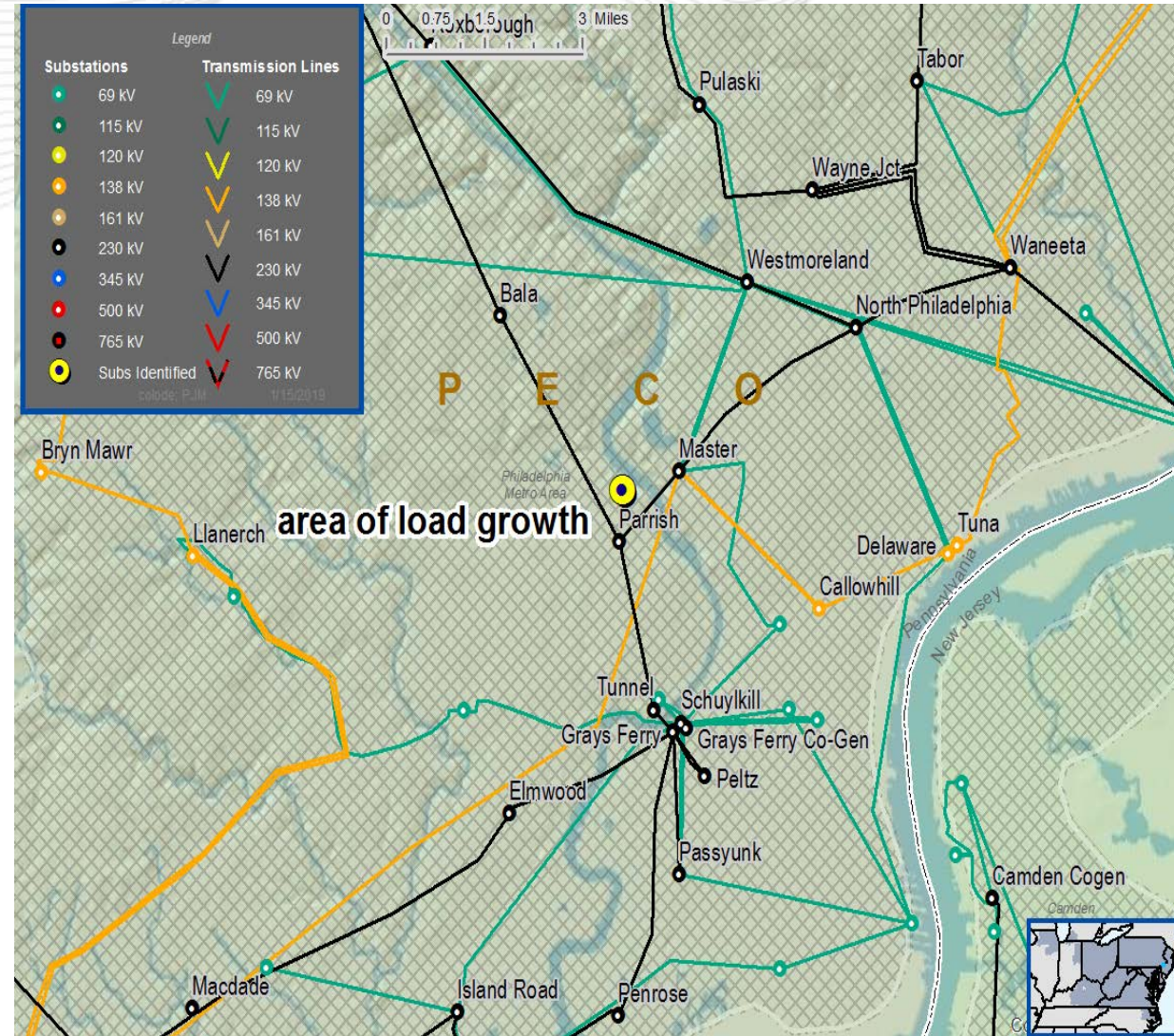
Problem Statement:

Customer load growth in the Upland area of Delaware County PA.

Specific Assumption References:

PECO Energy Transmission Planning Assumptions document presented to SRRTEP on December 7, 2018.

New customer interconnection or modification to an existing customer.



Need Number: PE-2019-0002

Meeting Date: 01/25/2019

Process Stage: NEED

Supplemental Project Driver: Customer Service

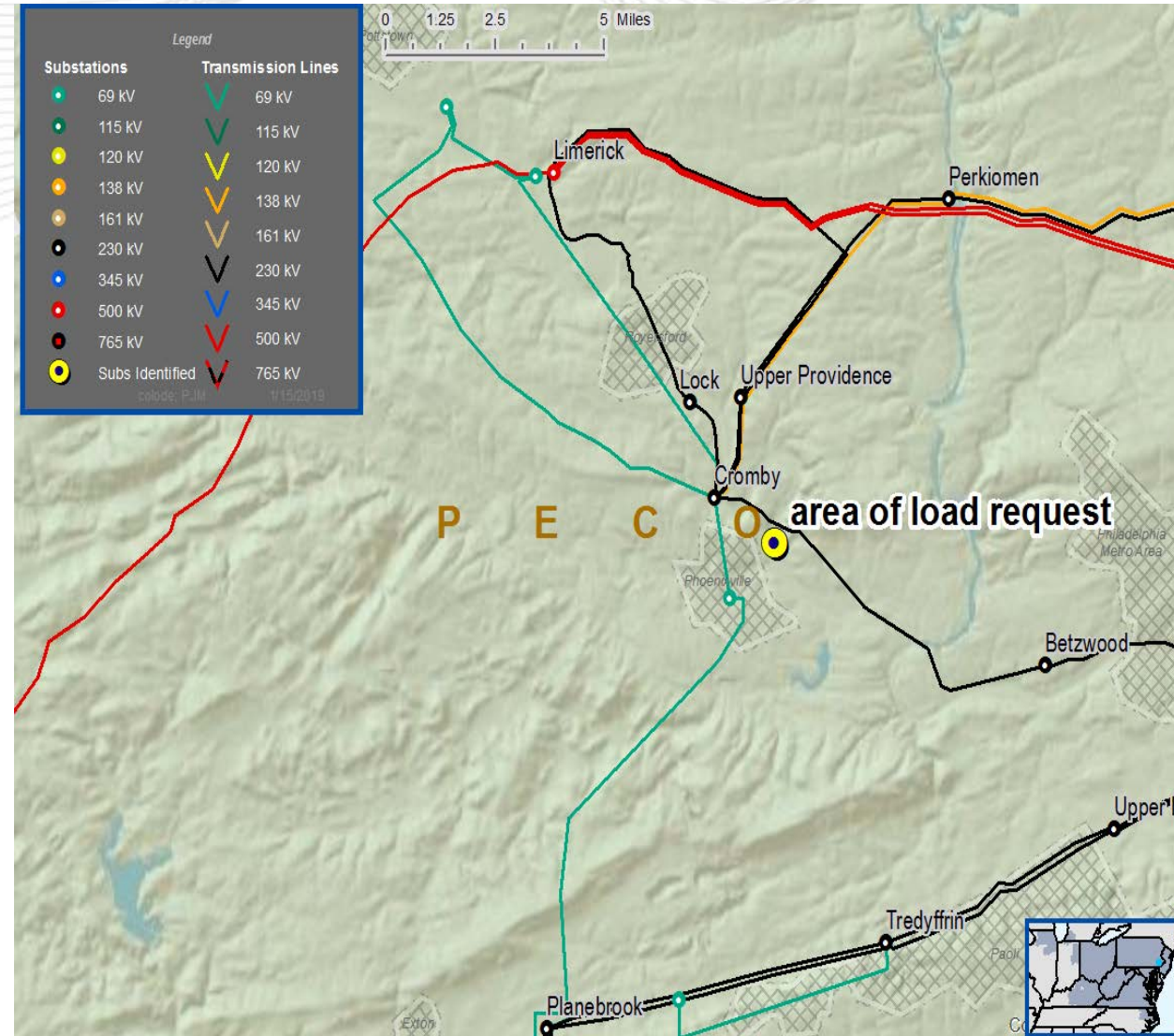
Problem Statement:

New customer has requested service in Chester County PA area.

Specific Assumption References:

PECO Energy Transmission Planning Assumptions document presented to SRRTEP on December 7, 2018.

New customer interconnection or modification to an existing customer.



Questions?





Revision History

1/15/2019 – V1 – Original version posted to pjm.com