



# 2020 Preliminary PJM Load Forecast

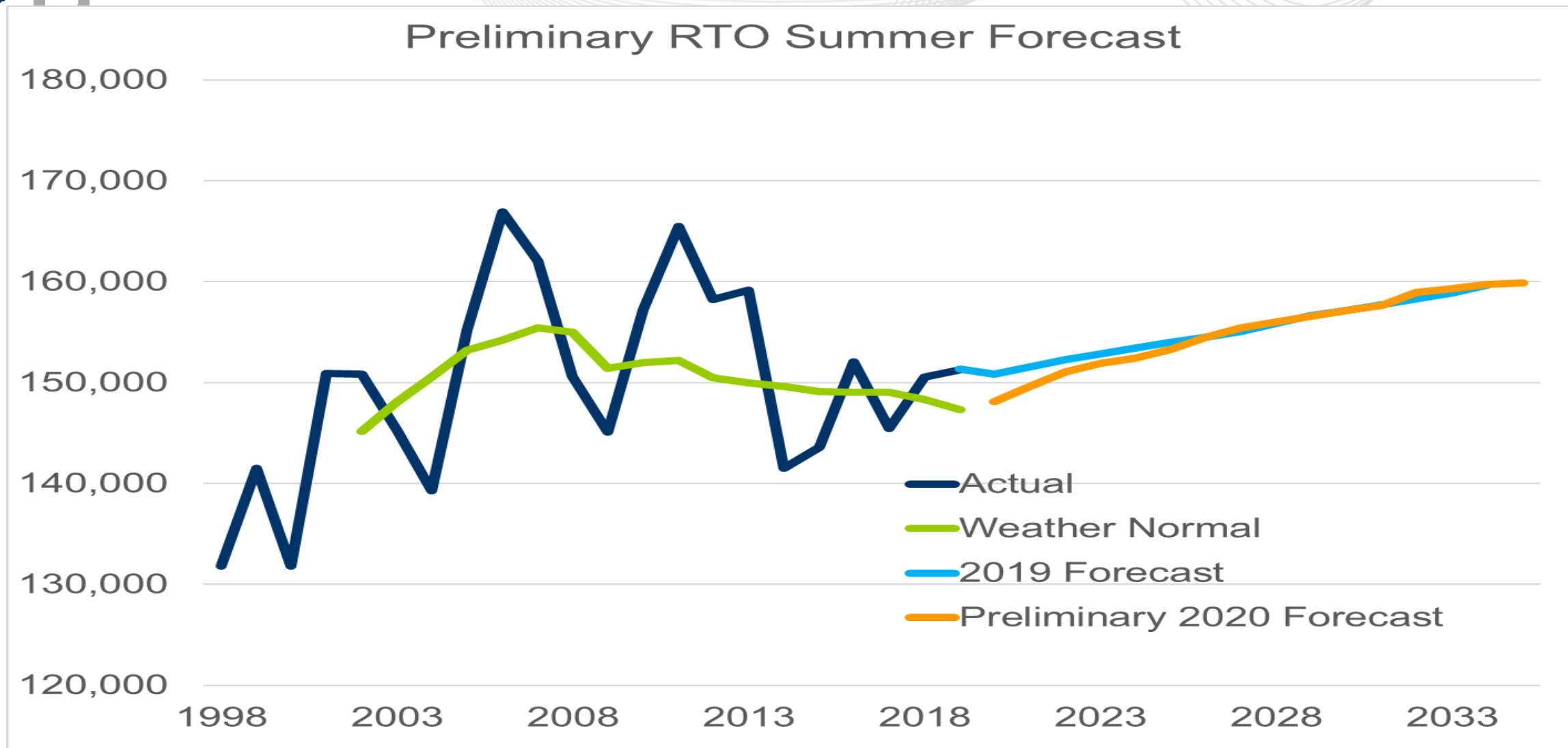
Andrew Gledhill  
Resource Adequacy Planning

Planning Committee  
December 12, 2019

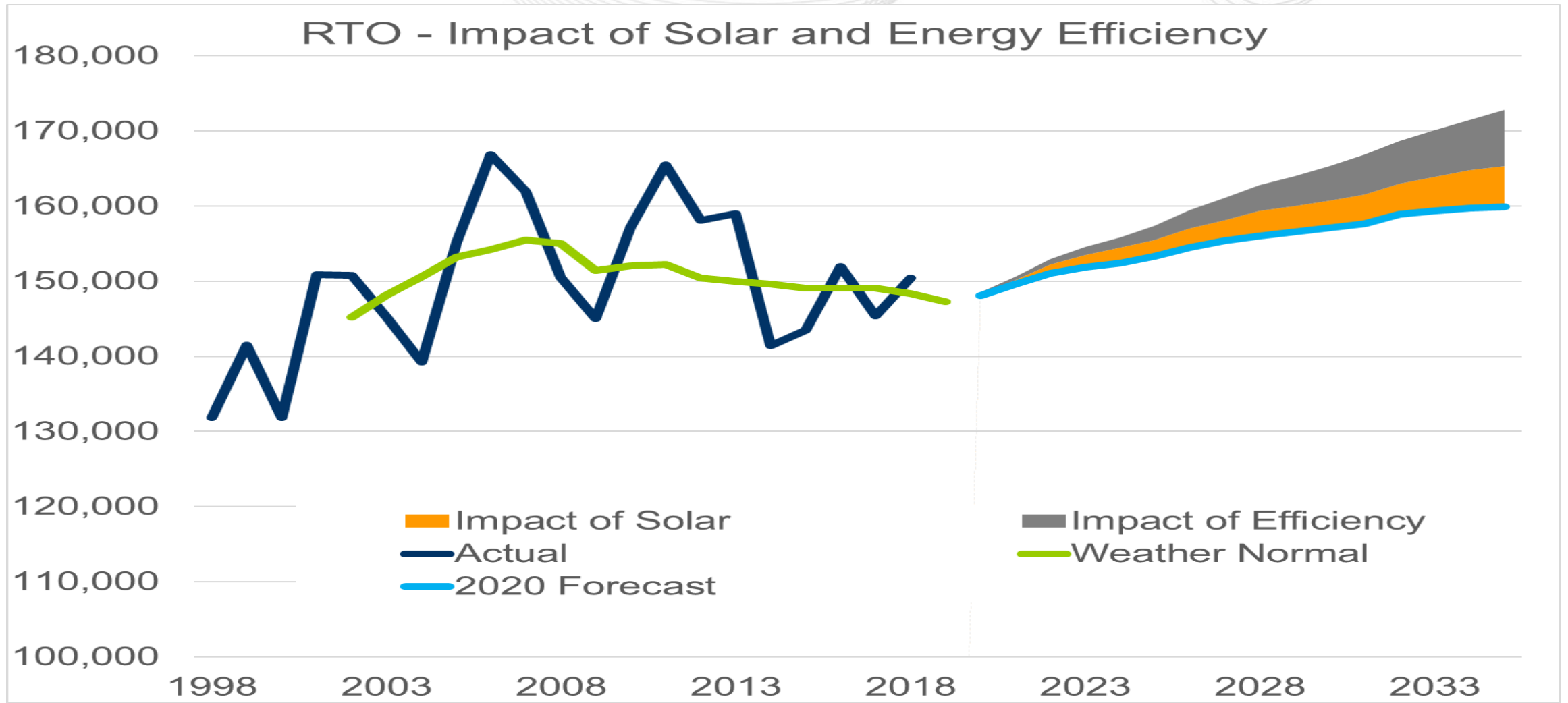
- Estimation Period: January 2010 through August 2019
- Weather Simulation: 1994 to 2018 (325 Scenarios)
- End Use Data: Based on Itron's 2019 release
  - Calibration 1998-2018 using EIA 861 data
- Economics: September 2019 vintage from Moody's Analytics
- AWS Solar Addbacks & IHS Solar Forecast (zonal & peak allocation by PJM)
- Forecast Adjustments – APS, BGE, COMED and Dominion

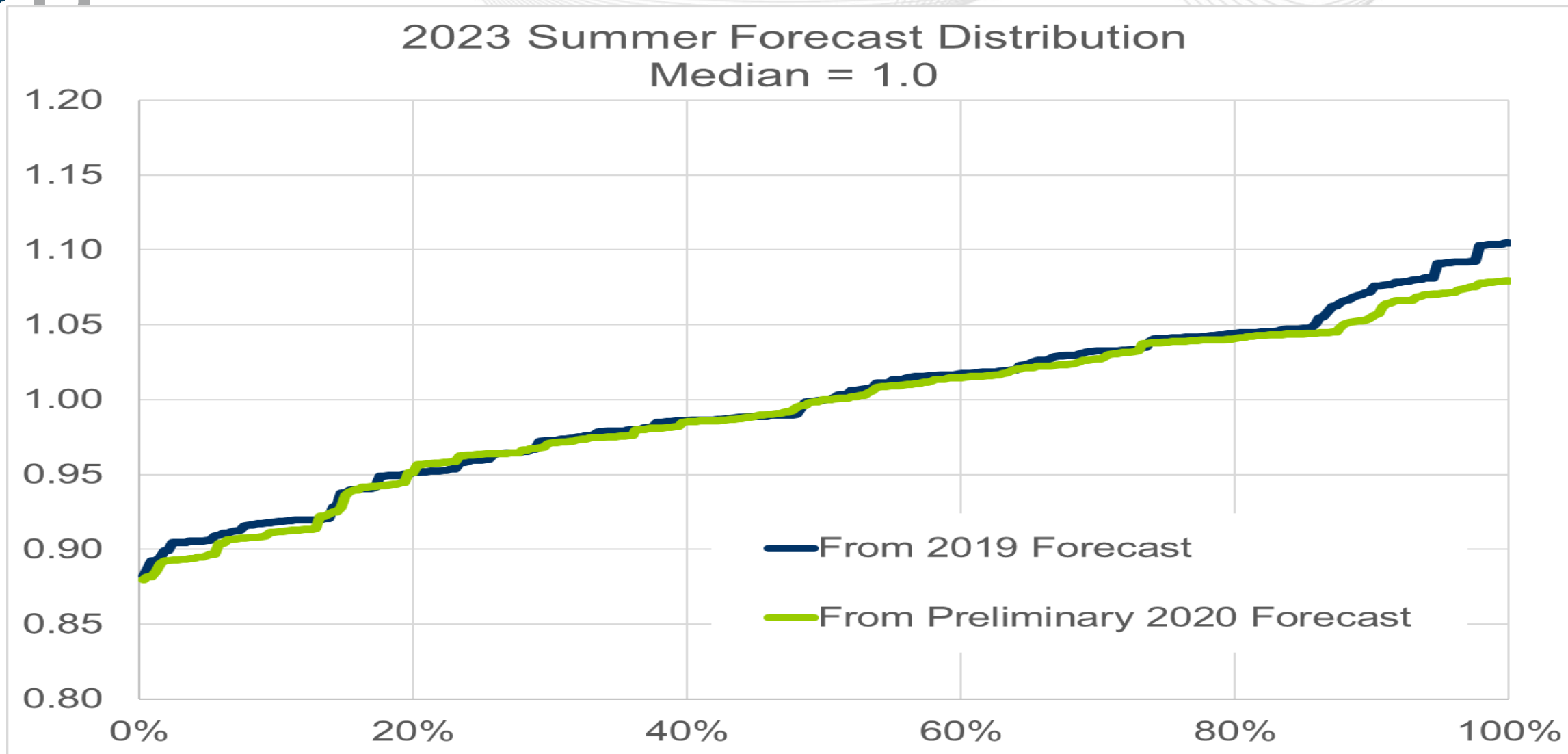


# *Summer*

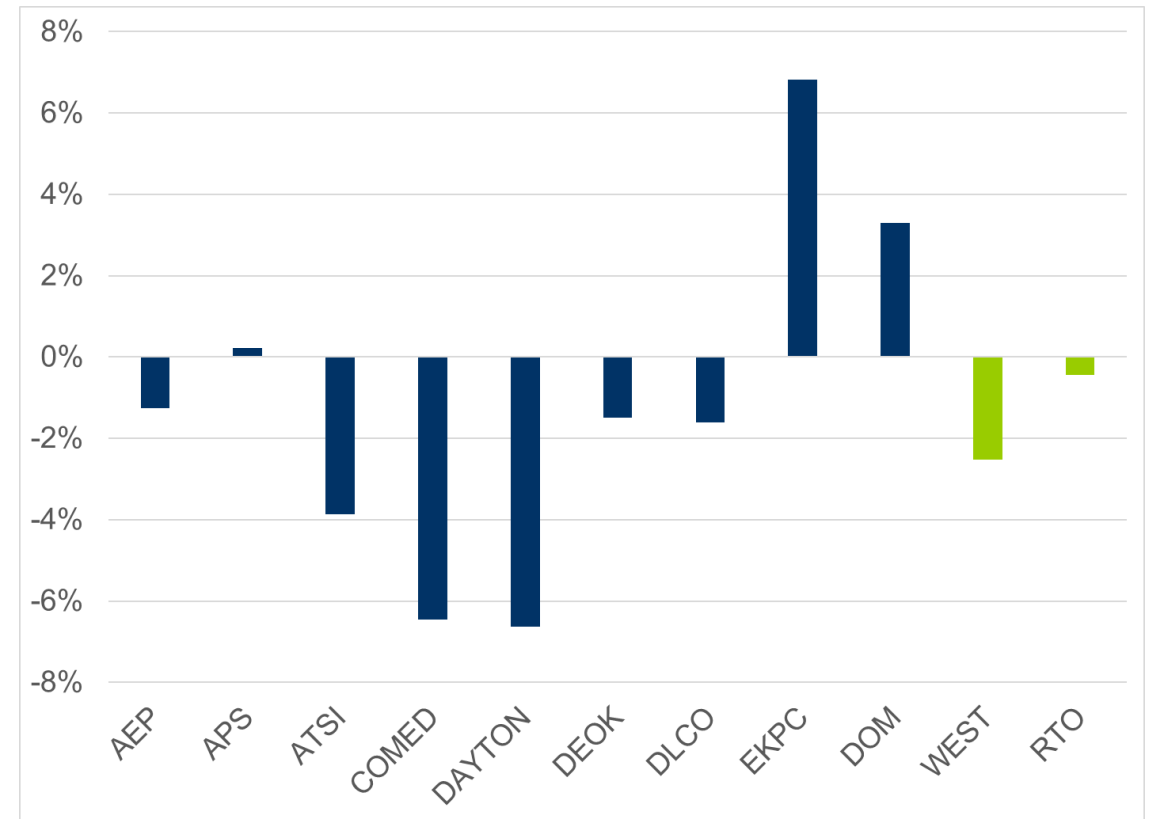
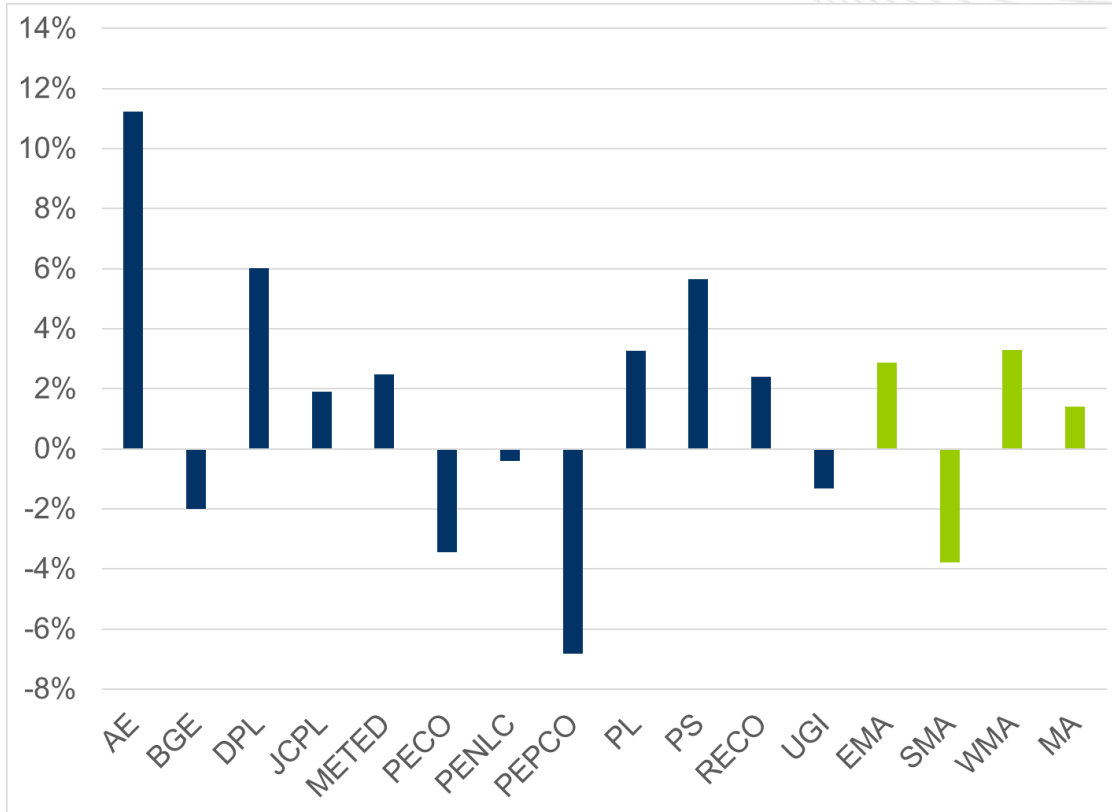


# Impact to Summer Forecast from Distributed Solar and Energy Efficiency





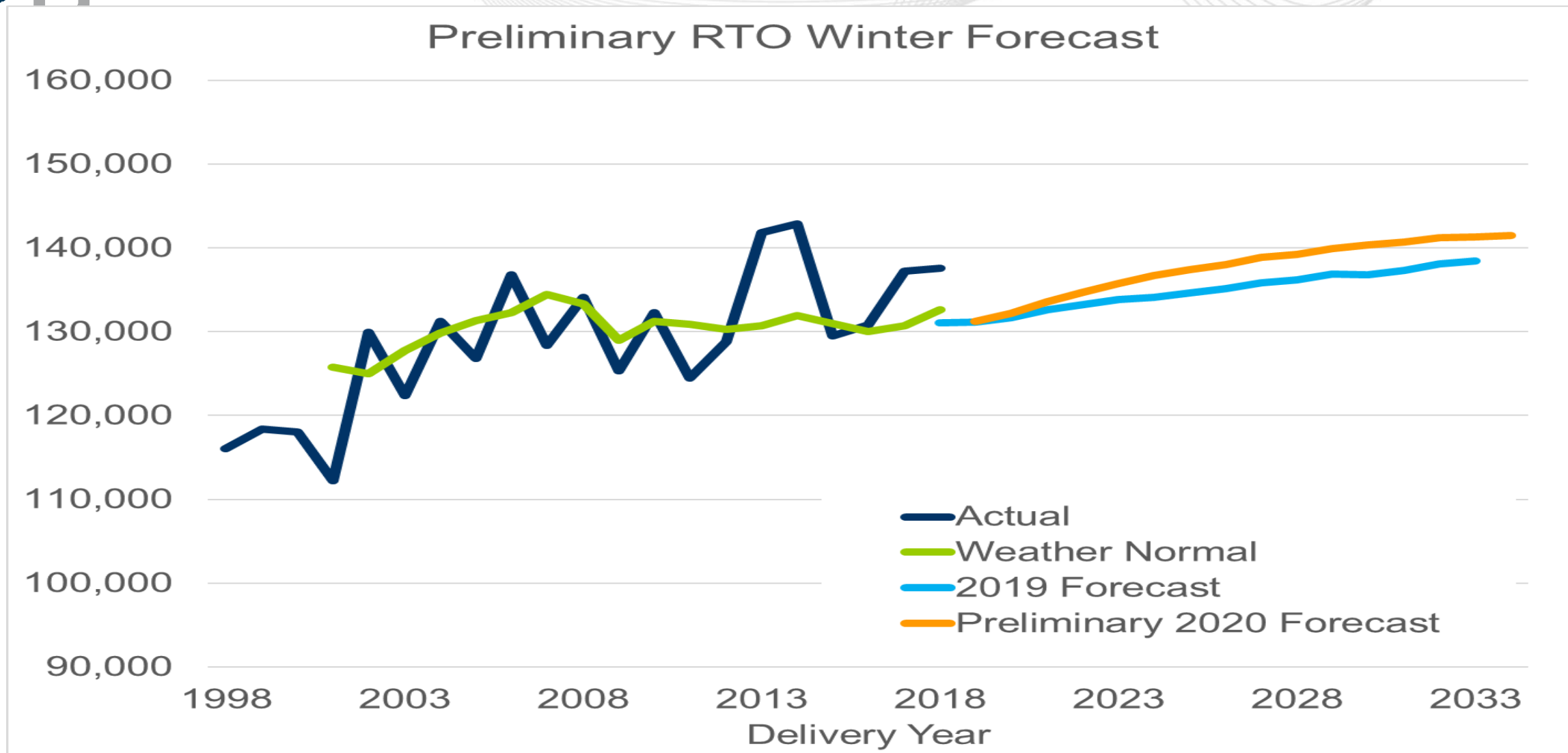
# 2025 Summer Peak Comparison- Preliminary 2020 Forecast vs 2019 Forecast



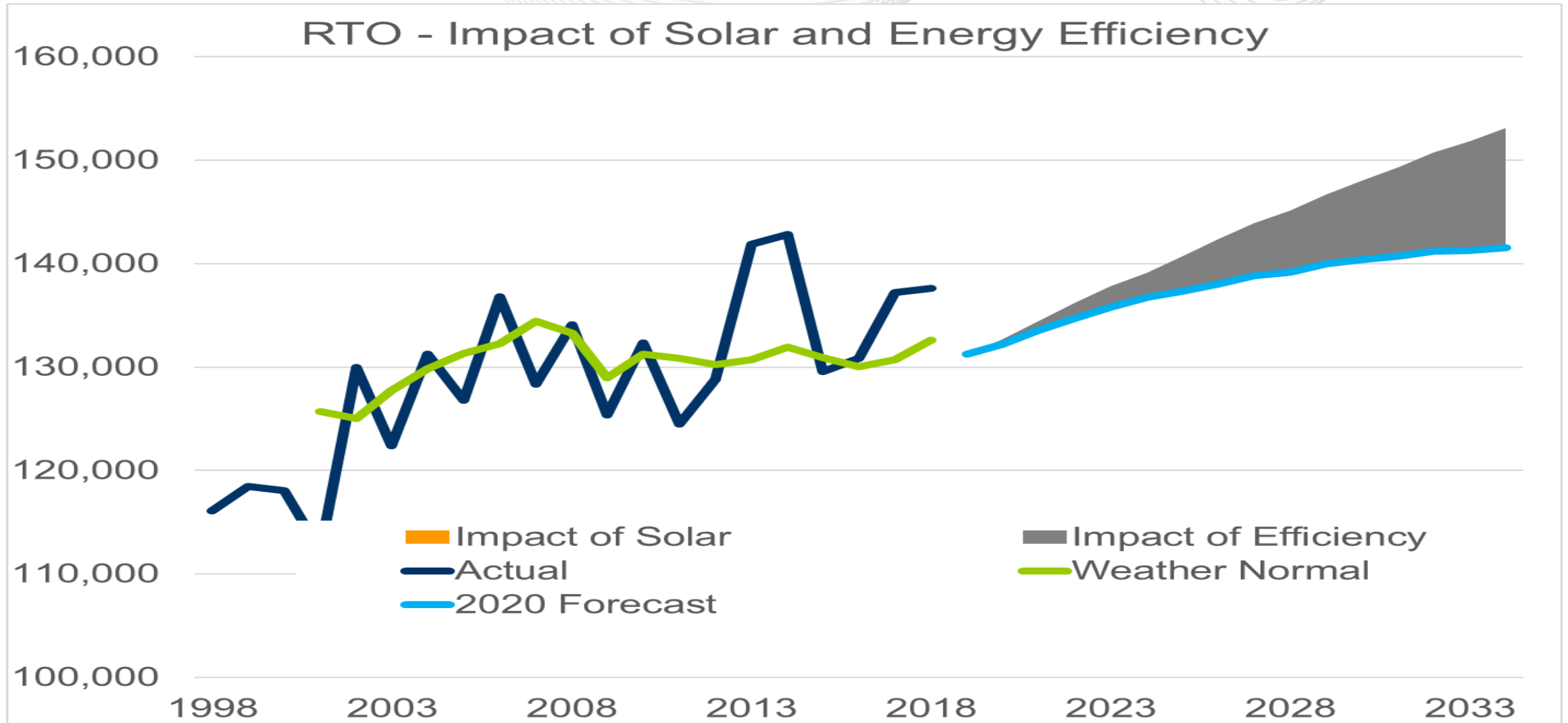


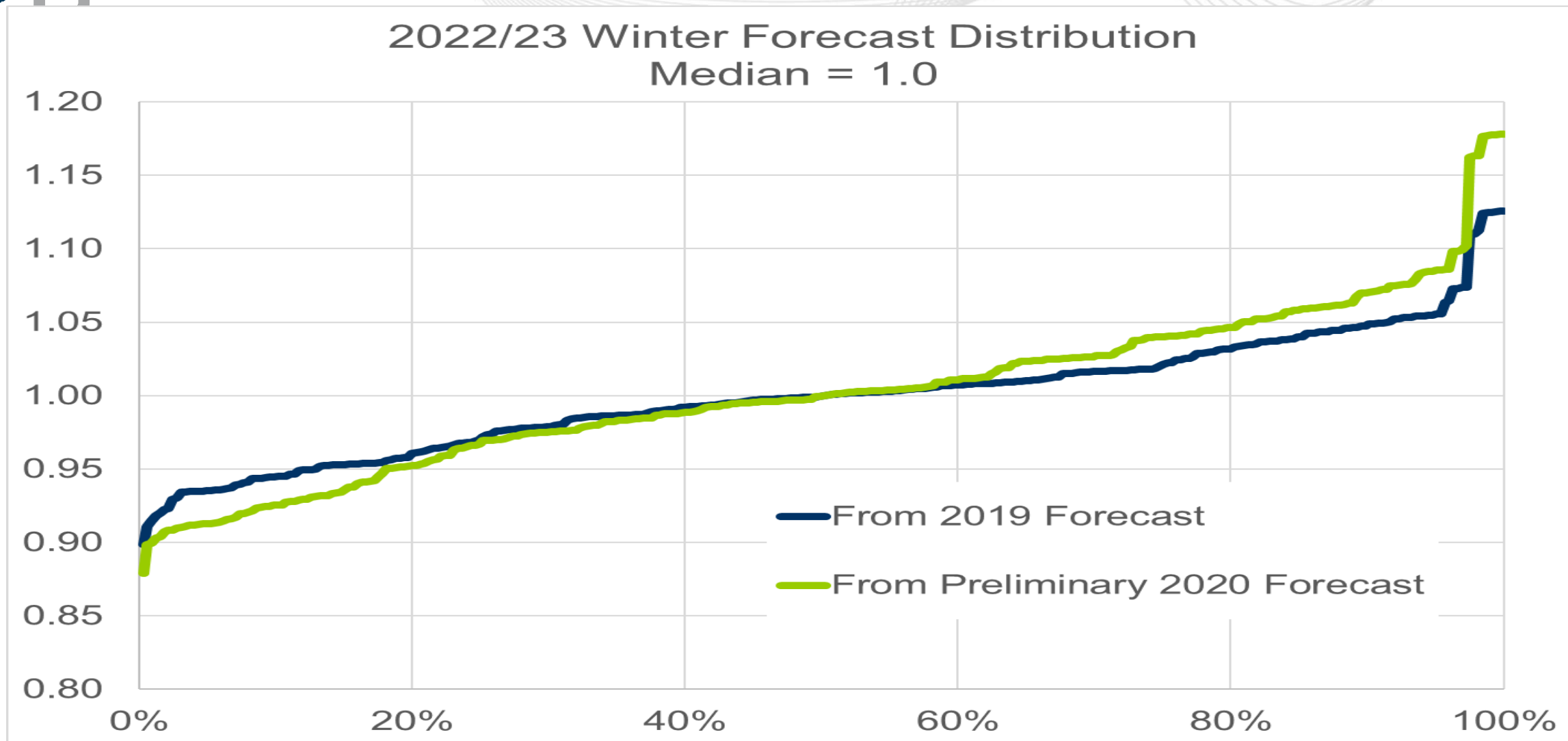
# *Winter*



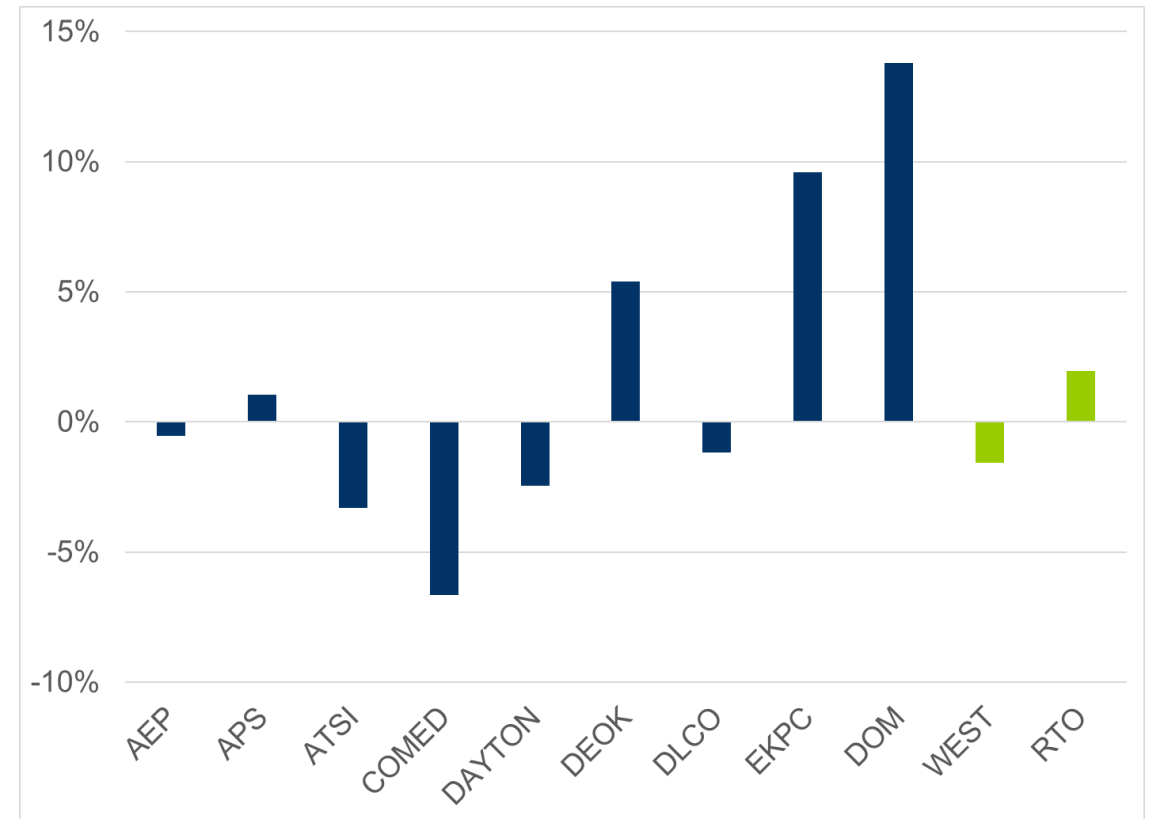
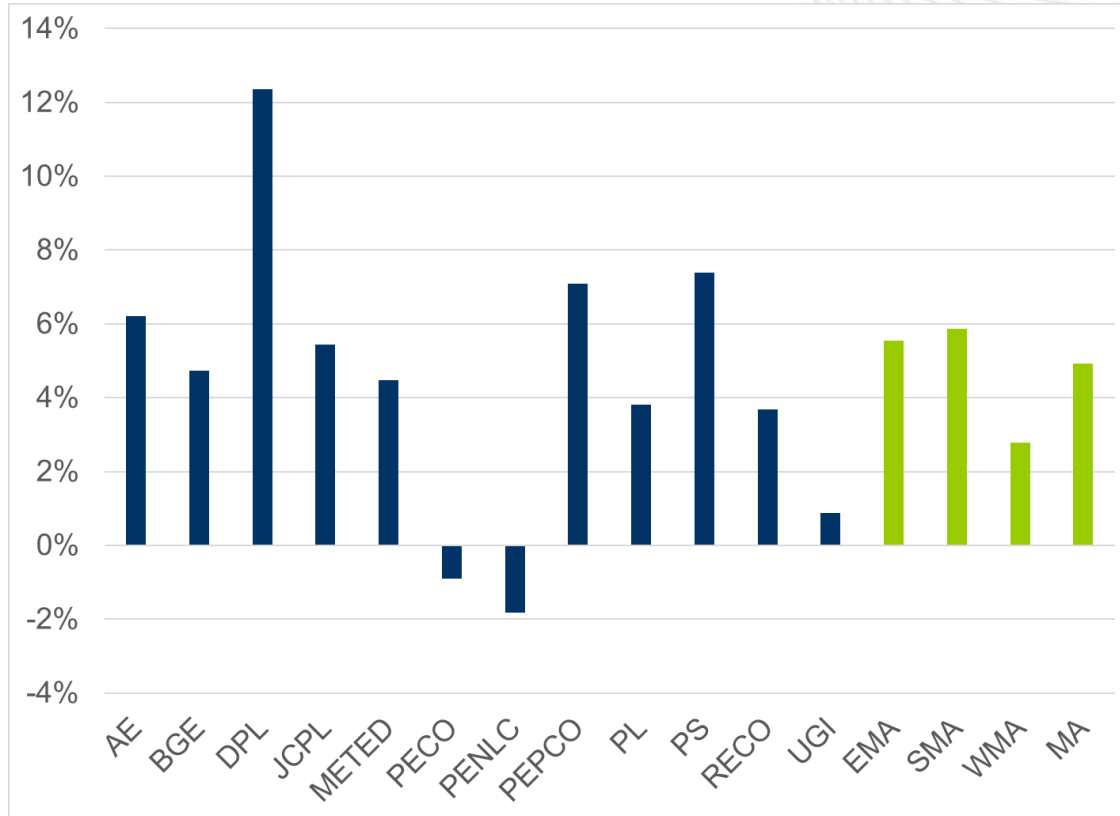


# Impact to Winter Forecast from Distributed Solar and Energy Efficiency





# 2024/25 Winter Peak Comparison- Preliminary 2020 Forecast vs 2019 Forecast



- Update forecast with final loads
- Publish final report in late December
  - Accompanying spreadsheets
    - Unrestricted Loads
    - End-Use Indices
    - Weather Variables
    - Statistical Appendix
  - Finalize Load Report Supplement (Draft available [here](#))