



# New Jan. 12, 2023: Congestion Impacts Detail

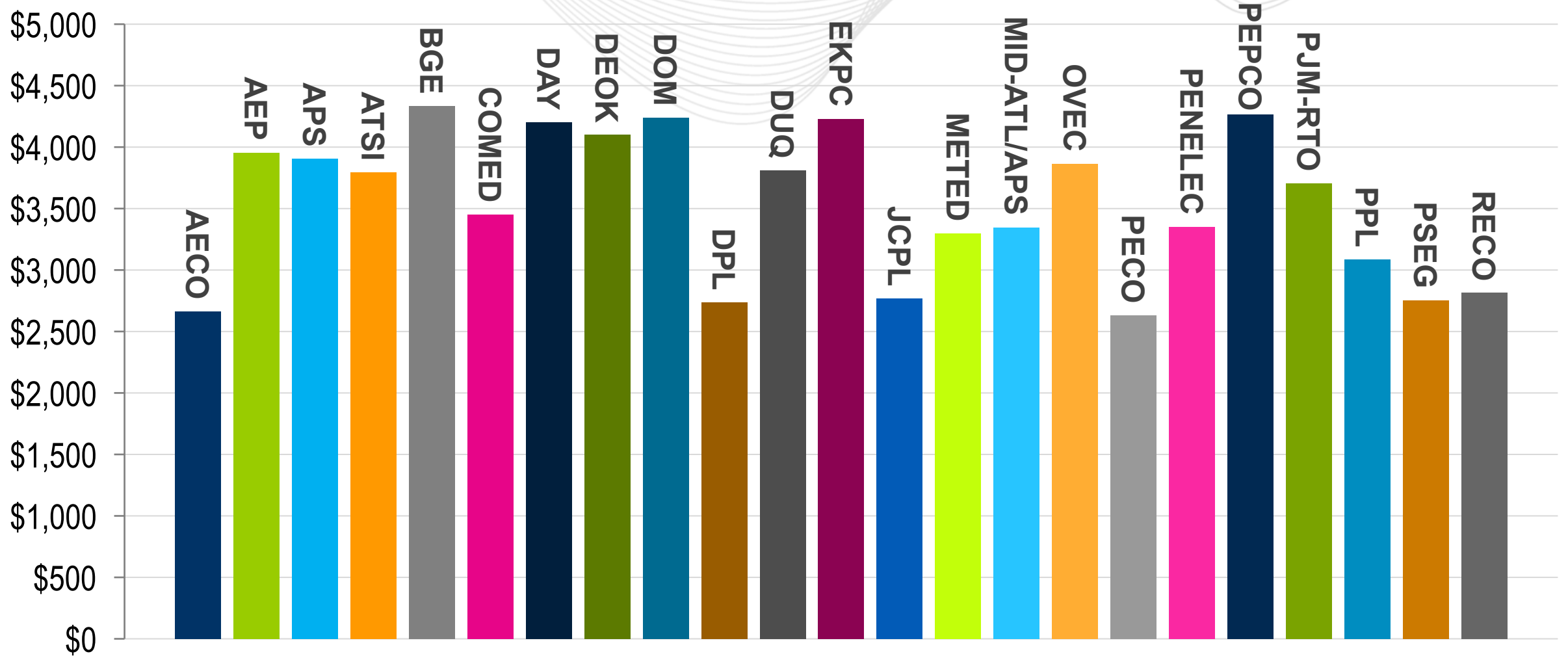
Equipment Name (500 KV and Above)*	Zone	No. of Intervals at TCPF	Est. Time Frame (EPT)	
			Dec. 23	Dec. 24
TRANSFER INTERFACE: AEP-DOM	N/A	<b>129</b>	9:35-22:30	0:05-23:50
JUNIATA 1 XFORMER H 500 KV	PPL	<b>73</b>	19:20-21:25	1:30 4:35-09:55
CONASTON-PEACHBOT 5012B 500 KV	BC	<b>21</b>	22:20-23:45	0:40
CABOT-KEYSTONE 5002B 500 KV	APS	<b>1</b>	12:25	
BROADFO2 T6 XFORMER H 765 KV	AEP	<b>28</b>	9:15-11:10 12:35-12:45, 12:55	

\*Complete list of binding constraints available at Data Miner

**Key Takeaway:** High voltage constraints have a broader system impact on locational pricing.



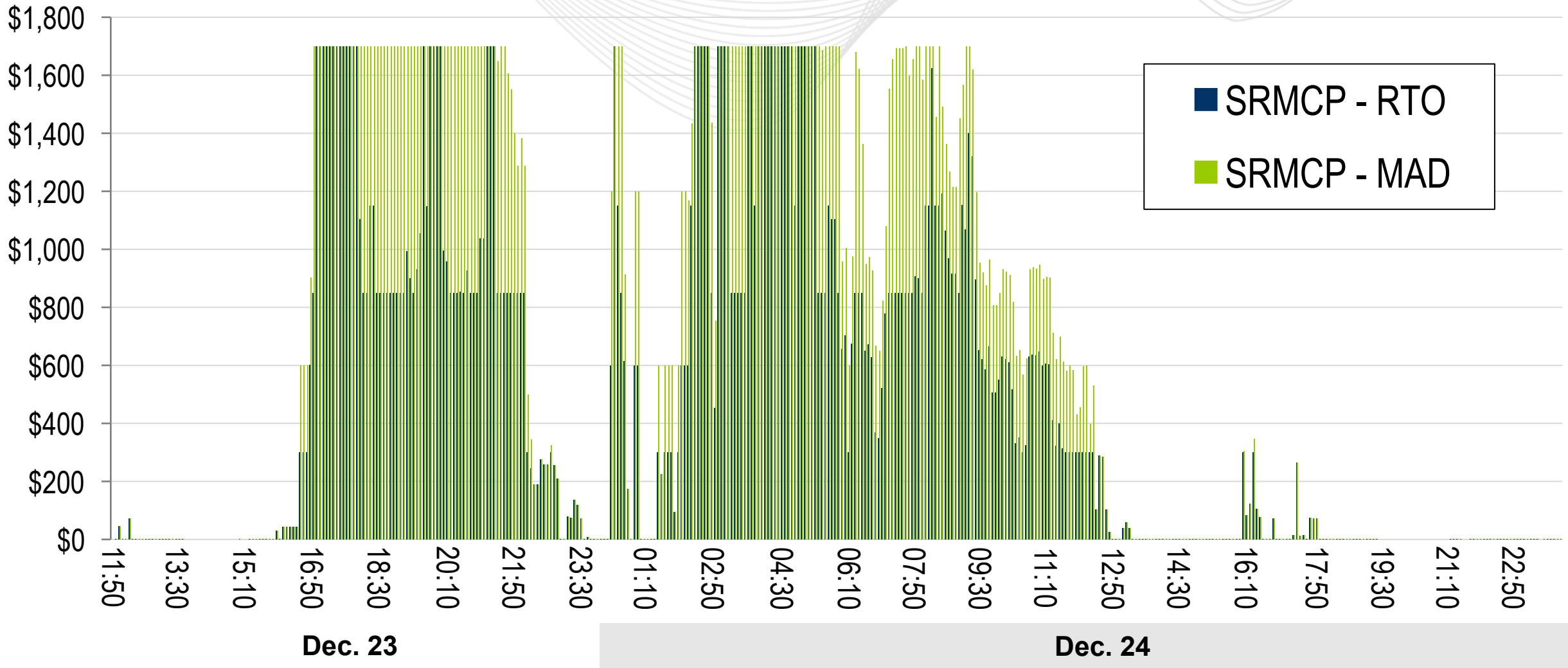
# New Jan. 12, 2023: Total Hourly Zonal LMP – Dec. 23 17:00





# Synch Reserve Market Clearing Price (SRMCP)

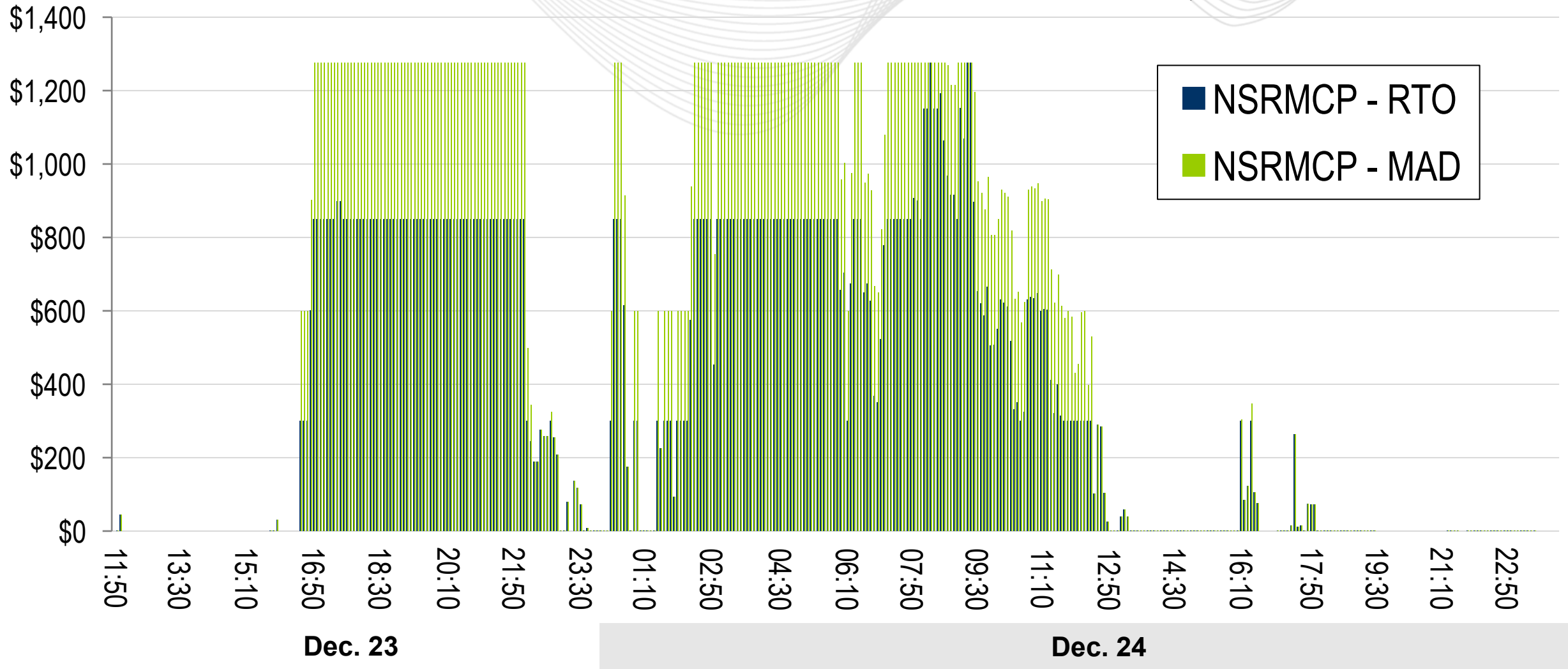
New Jan. 12, 2023: Interval Detail





# Non-Synch Reserve Market Clearing Price (NSRMCP)

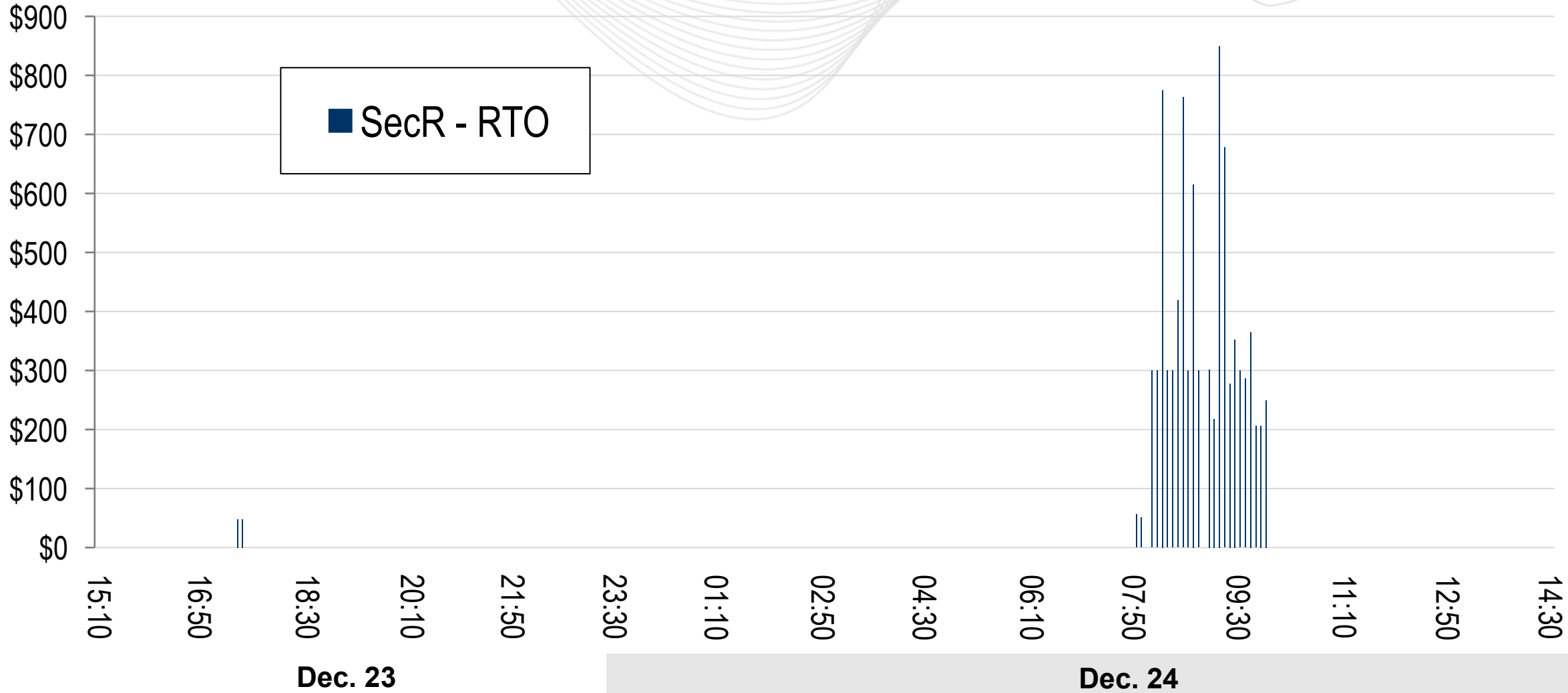
*New Jan. 12, 2023: Interval Detail*





# Secondary Reserve Market Clearing Price (SecRMCP)

New Jan. 12, 2023: Interval Detail



**PROTECT THE  
POWER GRID  
THINK BEFORE  
YOU CLICK!**



Be alert to  
malicious  
phishing emails.

**Report suspicious email activity to PJM.**  
(610) 666-2244 / [it\\_ops\\_ctr\\_shift@pjm.com](mailto:it_ops_ctr_shift@pjm.com)

