

# 2020 Day Ahead Scheduling Reserve Requirement

David Kimmel

Senior Engineer, Operation Analysis &  
Compliance

Markets And Reliability Committee

December 5, 2019

## **DASR Req. = LFE + FOR Components**

- Time Period Winter 2017 through Fall 2019

### Load Forecast Error (LFE) Component

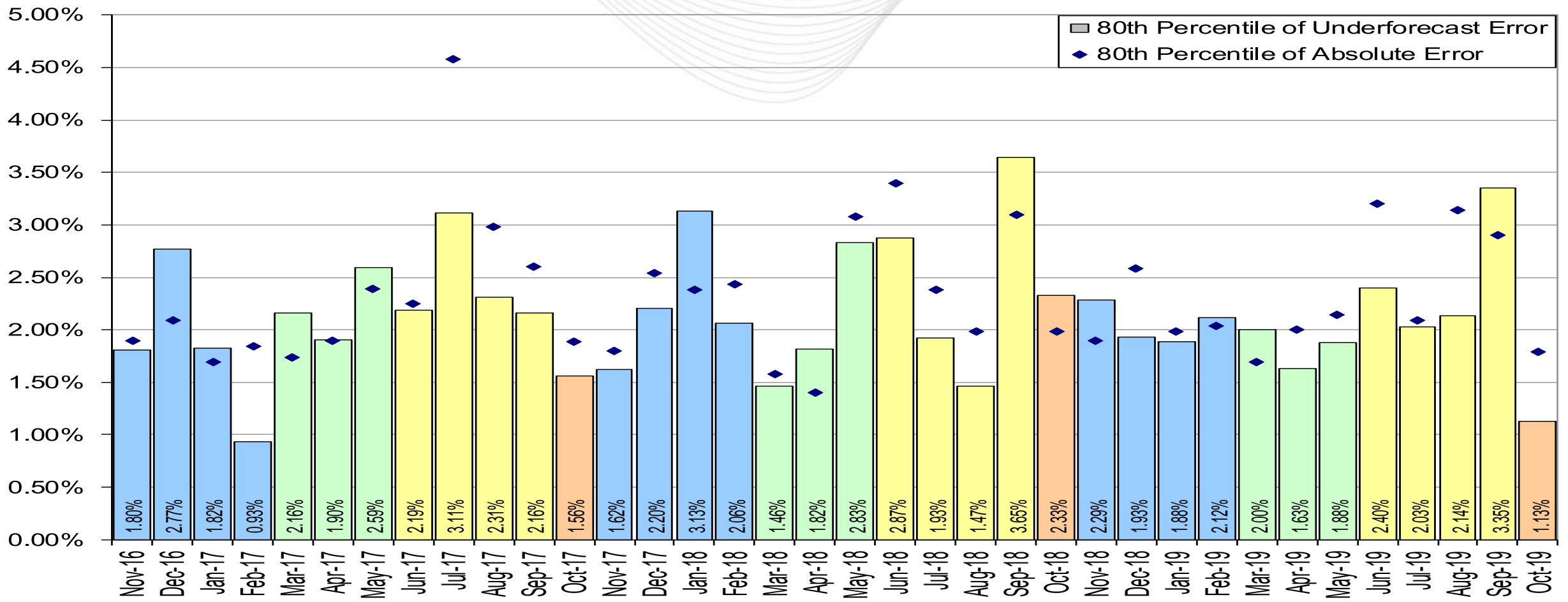
- 3 year average of Under forecasted LFE

### Forced Outage Rate Component

- 3 year average of eDART Forced Outages, submitted after D-1 18:00, effective after D 8:00 ending before D 20:00

Season	Load Forecast Error Component 80th Percentile Absolute Error				Forced Outage Rate Component All Forced Outage Tickets				DA Sched.
	2017	2018	2019	Rollup	2017	2018	2019	Rollup	Req.
Winter	1.83%	2.25%	2.06%	2.05%	2.92%	3.64%	2.80%	3.12%	5.17%
Spring	2.22%	2.04%	1.84%	2.03%	3.56%	3.15%	2.24%	2.98%	5.01%
Summer	2.44%	2.48%	2.48%	2.47%	3.03%	2.80%	2.42%	2.75%	5.22%
Fall	1.56%	2.33%	1.13%	1.67%	3.08%	2.59%	2.07%	2.58%	4.25%
Annual				2.15%				2.92%	5.07%

- 2020 LFE component is 2.15% (down 0.03%)
- 2020 FOR component is 2.92% (down 0.19%)
- 2020 DASR Requirement is 5.07%



- 2019 DASR requirement was 5.29%
- Final 2020 DASR requirement is 5.07%
- Small decrease in Load Forecast Error & small decrease in Forced Outage Rate component
- Reviewed in October
- Endorsed at November SOS and November OC
- Seeking endorsement at December MRC
- Implement in January
- Final 2020 DASR value will be incorporated into Manual 13 Changes