

Weather Normalized Load

MMUAC

December 4, 2020

Jane Wei

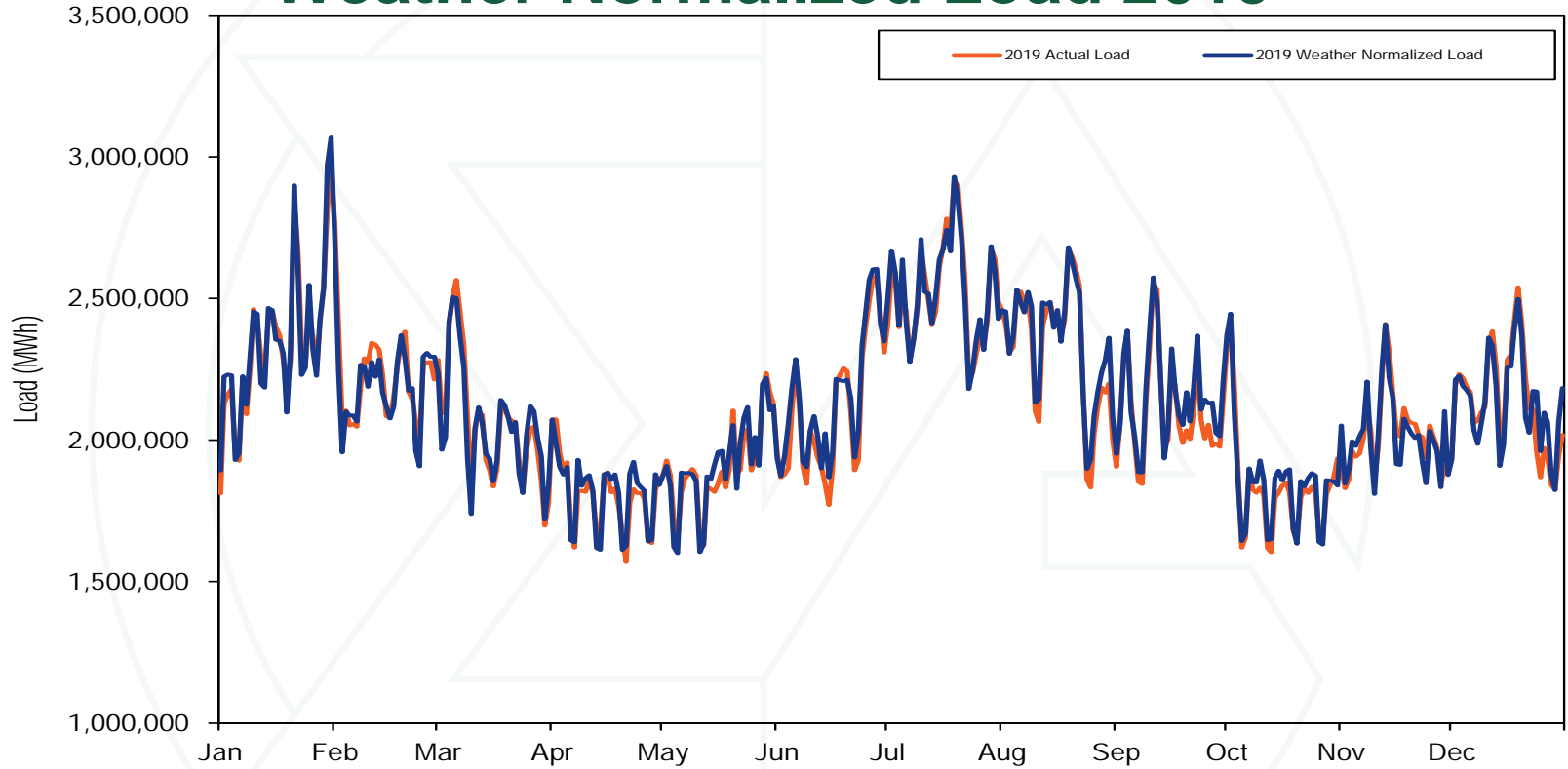


Monitoring Analytics

Weather Normalized Load

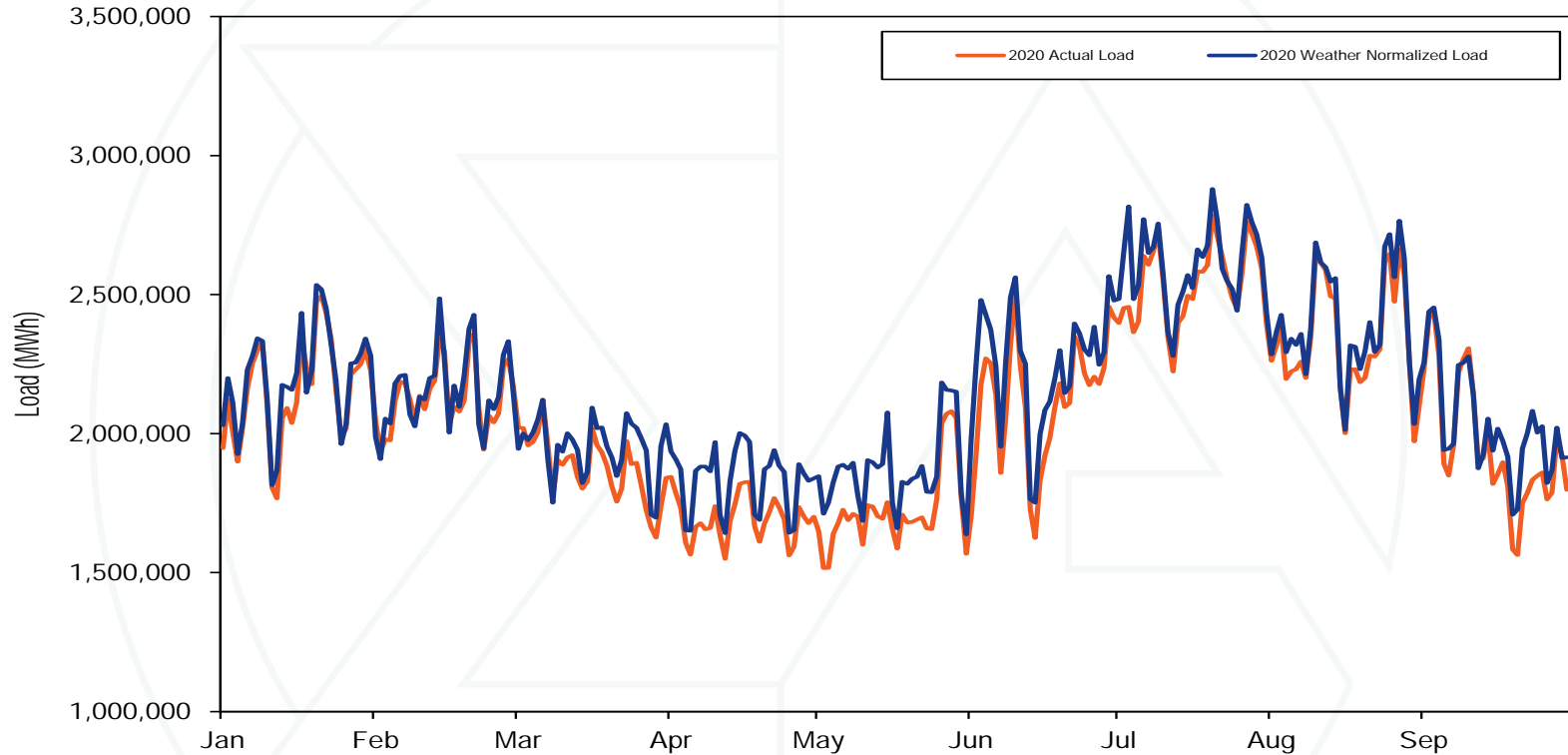
- **PJM real-time load was lower in the first nine months of 2020 than in the first nine months of 2019. This was a result of both weather conditions and COVID-19.**
- **The IMM developed a measure of weather normalized load to help identify the separate impact of COVID-19.**
- **The weather normalized model is based on the historic relationship between PJM daily load, and HDD, CDD, and time of year, for 2015 through 2018. (Heating/cooling degree days.)**

Weather Normalized Load 2019



Actual load was very close to weather normalized load.

Weather Normalized Load 2020



Actual load was significantly lower than weather normalized load from March through May, and in late September.

Monitoring Analytics, LLC

2621 Van Buren Avenue

Suite 160

Eagleville, PA

19403

(610) 271-8050

MA@monitoringanalytics.com

www.MonitoringAnalytics.com

